

**LOOP 104 Hose Incident
and
Crescent Midstream Bayou Lafourche**

BTNEP Management Conference – May 14, 2026

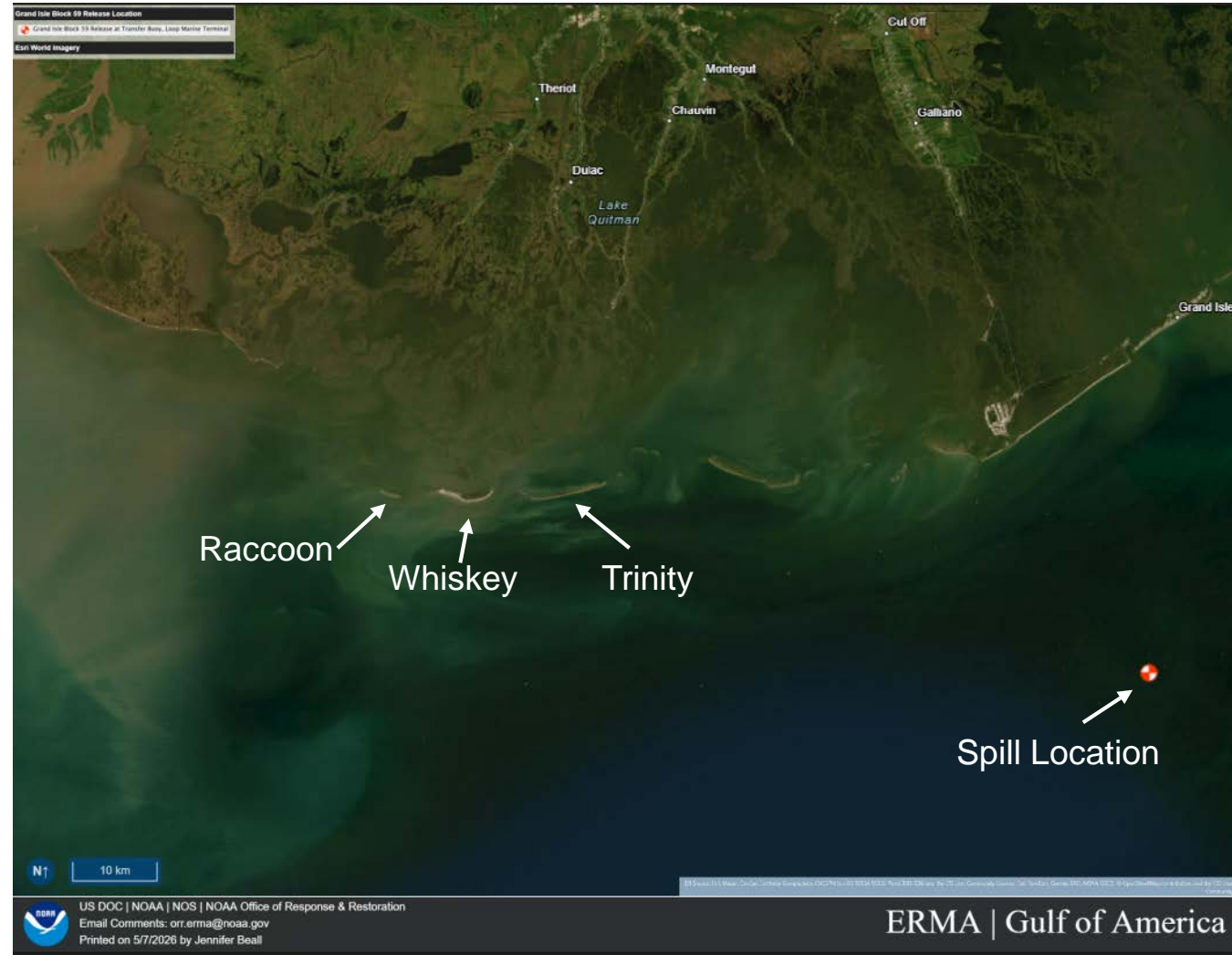


LOUISIANA DEPARTMENT OF
CONSERVATION AND ENERGY

LOOP 104 HOSE INCIDENT OVERVIEW



- Spill caused by mechanical failure
- Source secured immediately and damaged equipment replaced
- Unified Command Consists of:
 - U.S. Coast Guard (USCG)
 - Louisiana Oil Spill Coordinator's Office (LOSCO)
 - LOOP LLC



RESPONSE EQUIPMENT AND RESOURCES



- Large-scale deployment of response assets:
 - 100+ vessels
 - 650+ personnel
 - 30 miles of containment and absorbent boom
- Aerial surveillance support:
 - Drone
 - Fixed wing aircraft
 - Helicopters
- No dispersants used



LOOP 104 HOSE INCIDENT



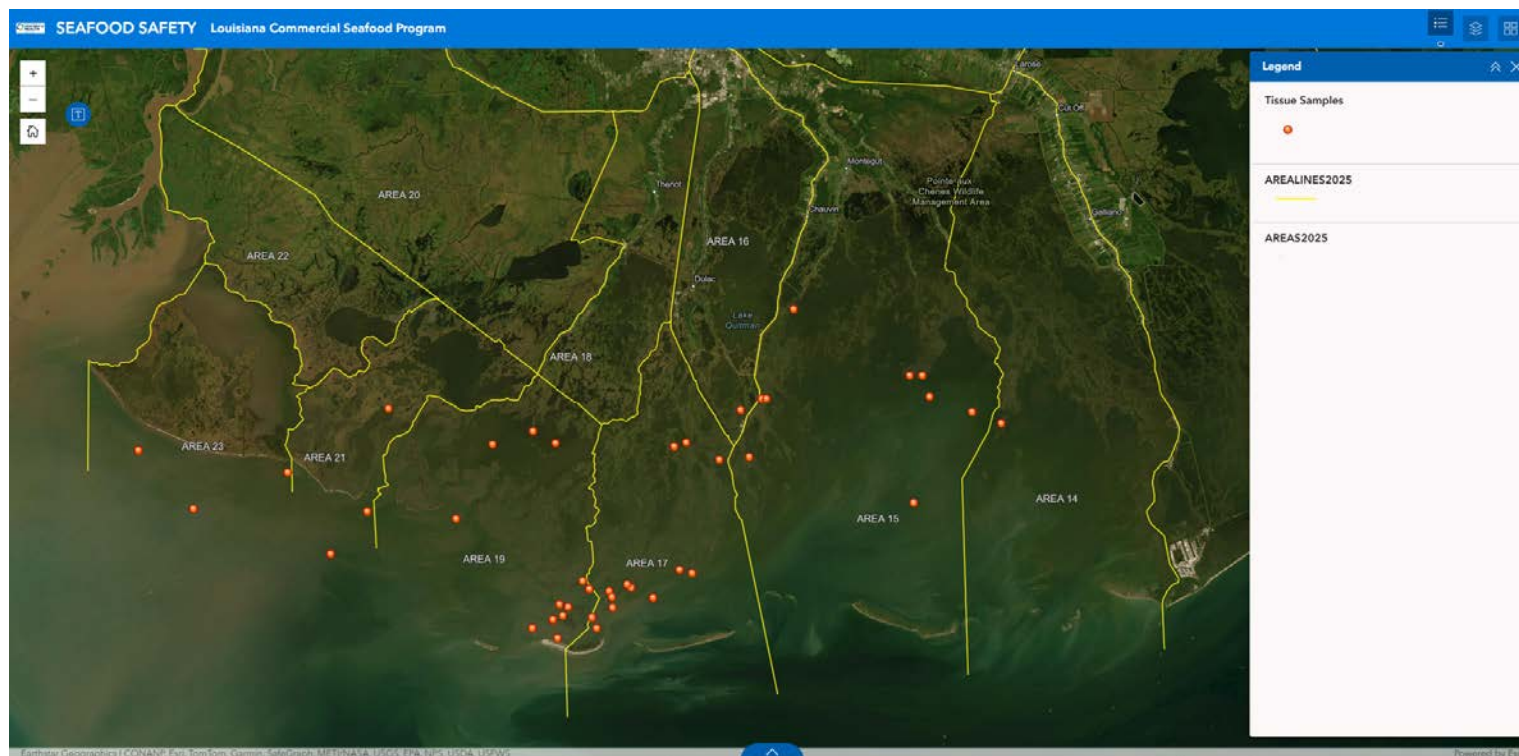
WILDLIFE OPERATIONS

- Wildlife Monitoring, Collection, and Rehabilitation
 - Specialized wildlife response teams remain active daily
 - Local rehabilitation facility treating impacted wildlife
- Wildlife Agencies Involved:
 - Louisiana Dept. of Wildlife and Fisheries (LDWF)
 - U.S. Fish and Wildlife Service (USFWS)
 - National Oceanic and Atmospheric Administration (NOAA)
- Wildlife Reporting Hotline
 - 1-985-368-9866



SEAFOOD SAMPLING IN RESPONSE TO THE INCIDENT

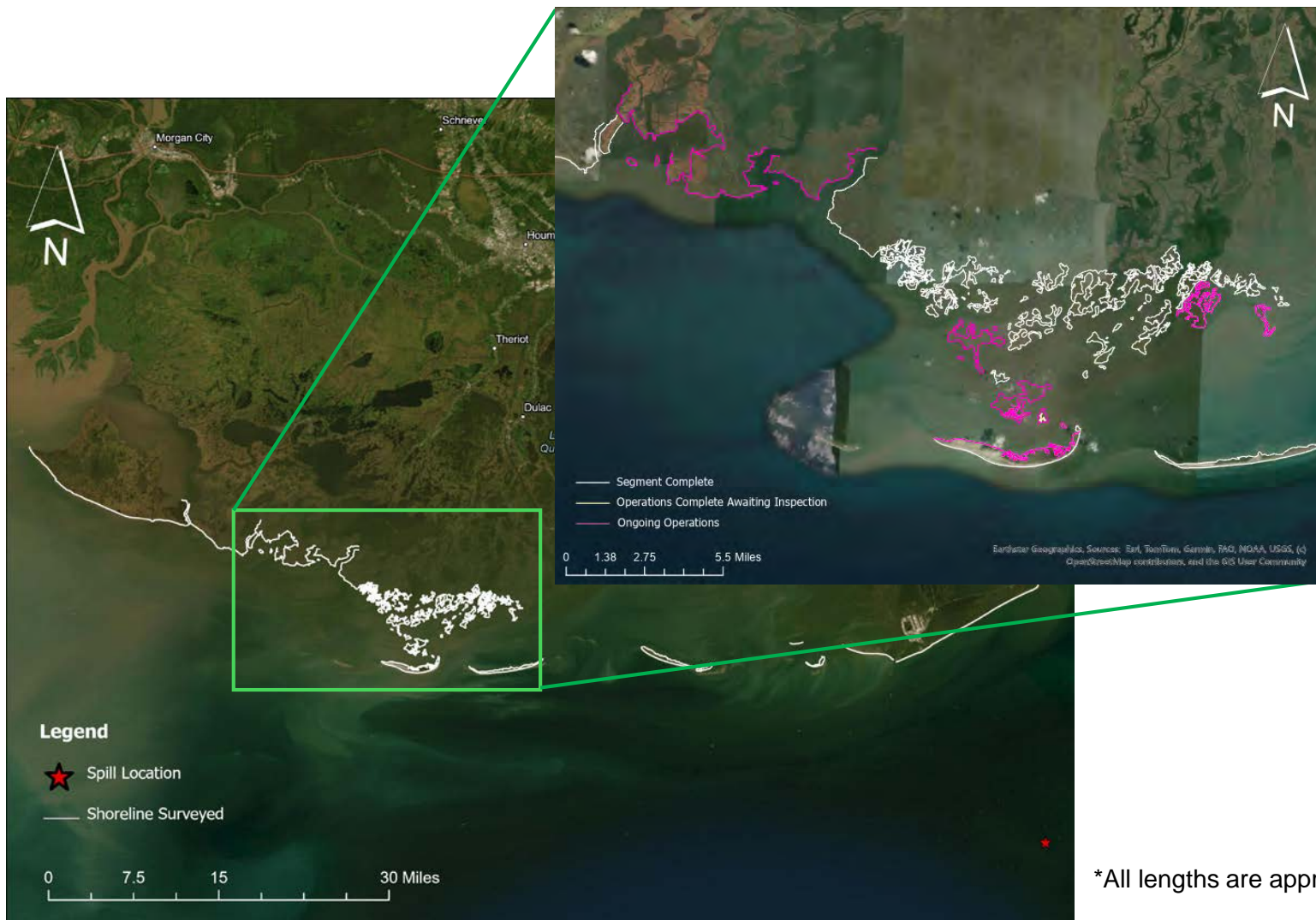
- On 03/14/2026 LA Department of Health (LDH) instituted a precautionary closure of molluscan shellfish waters in Area 15, 16, 17, 18, 19, and 21
- LDH worked in partnership with LDWF to collect and test tissue samples of:
 - Oysters
 - Shrimp
 - Crabs
 - Finfish
- Public reporting systems remain active for environmental concerns
 - <https://ldh.la.gov/bureau-of-sanitarian-services/molluscan-shellfish-program>



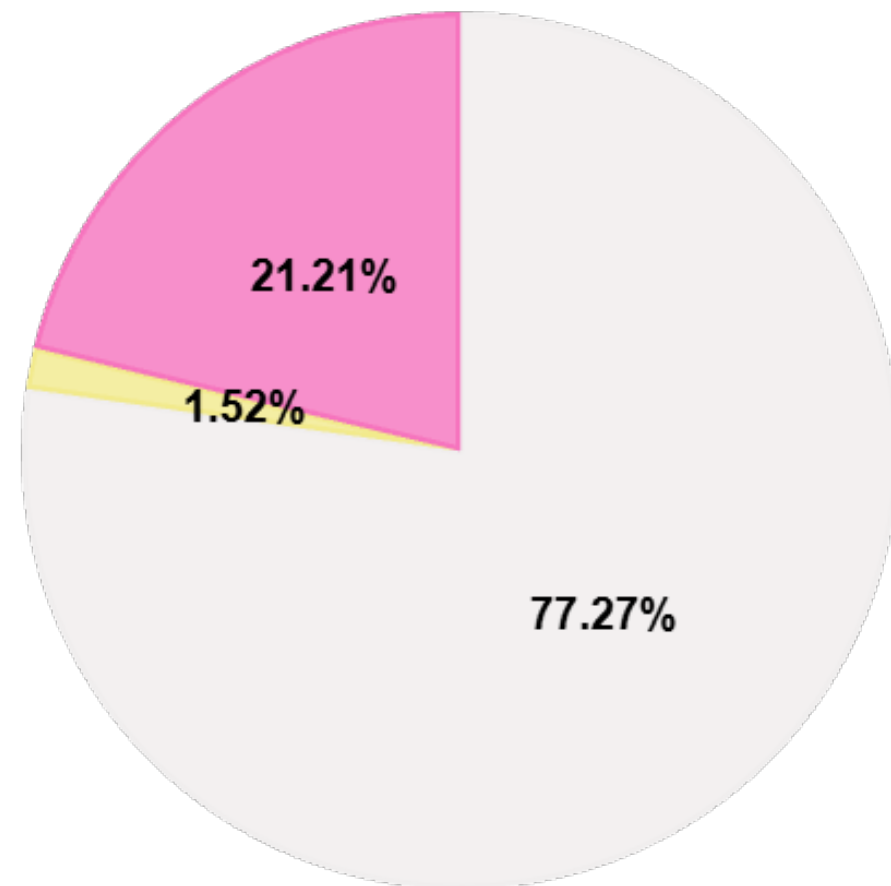
<https://experience.arcgis.com/experience/ab1299dc4cd64614b5cff72f2f22af51>



CURRENT STATUS OF RESPONSE AND CLEANUP



SHORELINE CLEANUP STATUS

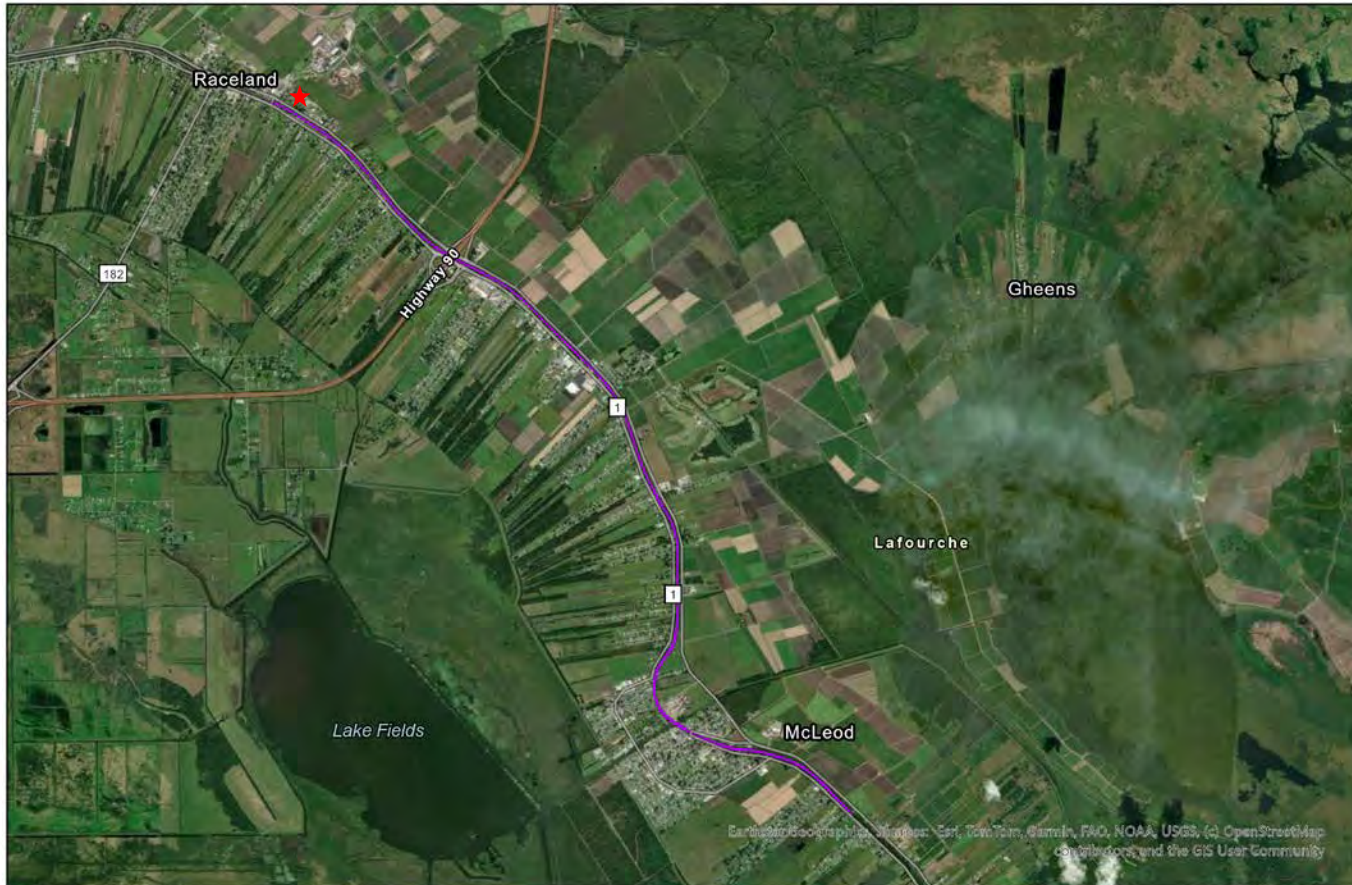


*All lengths are approximate, reflect most recent available survey, and may be subject to revision.

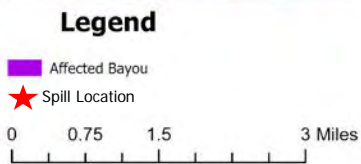
CRESCENT MIDSTREAM BAYOU LAFOURCHE INCIDENT



CRESCENT MIDSTREAM BAYOU LAFOURCHE INCIDENT OVERVIEW



- On July 27, 2024, crude oil was released into Bayou Lafourche in Raceland near Highway 182 and 308.
- Crude oil traveled ~8 miles down Bayou Lafourche

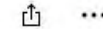


CRESCENT MIDSTREAM BAYOU LAFOURCHE INCIDENT OVERVIEW



Crescent Midstream Oil Spill

<https://storymaps.arcgis.com/stories/5be668be1cdb4d7696fc8e7ae94411ff>



Overview

Oil Spill Cleanup Actions

Air Monitoring

Photos

Contact Us



Esri Community Maps Contributors | Vantor | © OpenStreetMap, Microsoft | CONANP | Esri | TomTom | Garmin | SafeGraph | GeoTechnologies, Inc | METI/NASA | USGS | EPA | NPS | US Census Bureau | USDA | USFWS | US EPA Reg | Powered by Esri

GROUND PHOTO OF SOURCE



JULY 27, 2024 ENTRY POINT AND BAYOU



AGENCY RESPONSE



Unified Command:

- Crescent Midstream
- EPA
- LOSCO
- Lafourche Parish Government
 - ICP was located at Lafourche Parish EOC
- Lafourche Parish Sheriff's Office
- Bayou Lafourche Water District
- LDEQ
- LDWF
- LSP
- GOHSEP
- PHMSA
- USCG



INITIAL RESPONSE ACTIONS: FIRST 8 HOURS

- 0802 hrs - Lafourche Parish President activated ES&H (RP unknown)
- 1008 hrs - Crescent Midstream activated Forefront EM
- 1100 hrs – ICP @ Crescent Midstream in Raceland, LA
- 1200 hrs – Forefront EM air monitoring near Bayou Lafourche entry point
- 1250 hrs – Crescent & Forefront overflight
- 1330 hrs – Media statement published on Lafourche Parish Gov. Facebook
- 1500 hrs – Situation Brief with Unified Command
- 1600 hrs – Initial press conference

CURRENT STATUS OF INCIDENT



RESTORATION TYPES		COASTAL	POTENTIALLY INJURED RESOURCES/SERVICES							
			Herbaceous Wetlands	Forested Wetlands	Beach/Shoreline/Streambed	Oyster Reefs (& other)	Water Column Org.	Birds	Wildlife	Recreational
C/E ⁽¹⁾	Coastal Herbaceous Wetlands	✓	✓		✓	✓	✓	✓	✓	
	Coastal Forested Wetlands	✓	✓			✓	✓	✓	✓	
	Coastal Beach/Shoreline/Streambed			✓		✓	✓	✓	✓	
	Coastal Oyster Reefs (& other)				✓	✓	✓	✓	✓	
	Coastal Artificial Reefs				✓	✓	✓	✓	✓	
	Coastal SAV	✓			✓	✓	✓	✓	✓	
PP ⁽²⁾	Coastal Herbaceous Wetlands	✓	✓		✓	✓	✓	✓	✓	
	Coastal Forested Wetlands	✓	✓			✓	✓	✓	✓	
	Coastal Beach/Shoreline/Streambed			✓		✓	✓	✓	✓	
Ac/LP ⁽³⁾	Coastal Herbaceous Wetlands	✓	✓		✓	✓	✓	✓	✓	
	Coastal Forested Wetlands	✓	✓			✓	✓	✓	✓	
	Coastal Beach/Shoreline/Streambed			✓		✓	✓	✓	✓	
	Coastal Oyster Reefs (& other)				✓	✓	✓	✓	✓	
	Coastal SAV	✓			✓	✓	✓	✓	✓	
S ⁽⁴⁾	Coastal Water Column Org.				✓				✓	
	Coastal Oyster Reefs (& other)				✓	✓			✓	
	Birds						✓		✓	
PF ⁽⁵⁾	Wildlife							✓	✓	
	Birds						✓		✓	
	Wildlife							✓	✓	
	Recreation								✓	
	Cultural									✓

- (1) Creation/Enhancement
- (2) Physical Protection of Habitat
- (3) Acquisition/Legal Protection
- (4) Stocking of Fauna
- (5) Physical Protection of Fauna

data.losco.org/Project

LOUISIANA OIL SPILL MANAGEMENT SYSTEM

10.0.539

Search LOSCO Spill Response Search NRDA Search NRDA Restoration Projects Search Administrative Records Submit a Project Search Restoration Funds Environmental Data Gateway

Submit a Project

I want to submit a new project. I want to revise a project.

Contact Information

Email Address:

Name:

Phone Number:

Affiliation:

Attachments

Drop files here or click here to add
(The selected files are added to below table. They will be uploaded once all Project details are entered and submitted.)

Document Type	Document Name	File Name	Actions
No data available in table.			

No records available

This database was created and is maintained by the La. Oil Spill Coordinator's Office (LOSOCO) for general informational purposes only. The user should be aware that the information contained in this database may have come from a variety of sources, which are of varying degrees of accuracy. LOSOCO does not warrant or guarantee its accuracy, nor does LOSOCO assume any responsibility or liability for any reliance thereon. The information in this database is not and is in no way intended to be comprehensive and does NOT contain information on all oil spills impacting Louisiana.



Co hosted by



Oceans &
Wildlife
Institute



Bringing response back to basics

September 28-30, 2026 | Palmer Events Center - Austin, TX



A three-day event strengthening core skills and collaboration through hands-on, Back to Basics training.

Scan for more
information

CONTACT INFORMATION



Marty Bienvenu

Executive Director/Oil Spill Coordinator

**Louisiana Department of Conservation
and Energy**

**Louisiana Oil Spill Coordinator's Office
(LOSCO)**

Phone: 225-925-1840

Email: marty.bienvenu@la.gov

Jennifer Beall

Deputy Coordinator

**Louisiana Department of Conservation
and Energy**

**Louisiana Oil Spill Coordinator's Office
(LOSCO)**

Phone: 225-925-3750

Email: Jennifer.Beall@la.gov