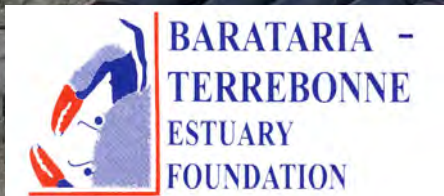


Saving Marshes and Ridges Together

A SMART Partnership



Matt Benoit
Habitat Restoration
Coordinator



SMART Partners

- BTNEP – Barataria-Terrebonne National Estuary Program
- BTEF –Barataria-Terrebonne Estuary Foundation
- Shell – Shell Upstream Deepwater Gulf of Mexico and their affiliates
- USACE – U.S. Army Corps of Engineers
- Greater Lafourche Port Commission (GLPC)
- CWPPRA – Coastal Wetlands Planning, Protection, and Restoration Act
- The Nature Conservancy (TNC)
- Bayou Grace Community Services
- Wetland Warriors
- Seattle Academy
- Christ & Holy Trinity Episcopal, Westport, Conn.
- Union College
- University of Buffalo
- Northern Illinois University
- Iowa State University
- Louisiana Department of Natural Resources (DNR)
- Les Reflections du Bayou
- The Gunston School Bay Studies Program
- Louisiana Department of Wildlife and Fisheries (LDWF)
- Louisiana Sea Grant (LSG)
- Nicholls State University (NSU) Biology Department
- Common Ground Relief
- University of Illinois
- University of Missouri
- University of Arkansas – Monticello
- Mulberry Elementary
- John Deere – Thibodaux
- Association of Corporate Counsel
- Appalachian State University
- University of Richmond – SEEDS Group
- Louisiana Master Gardeners
- Louisiana Coastal Protection and Restoration Authority (CPRA)
- Jefferson Parish
- Plaquemines Parish
- National Park Service (NPS)
- Patrick F. Taylor High School

Fourchon Maritime Forest Ridge Experimental Plantings





Native Woody Species

- Live oak
- Sand live oak
- Hackberry
- American beautyberry
- Honeylocust
- Persimmon
- Red mulberry
- Wax myrtle
- Yaupon
- Roughleaf dogwood
- Hercules' club
- Salt matrimony vine



Fourchon Ridge Plantings

2008

2005

2003

- 4 plantings
- 52 volunteers
- 1,750 woody plants
- 400 herbaceous plants



University at Buffalo
January 27, 2017



Northern Illinois University &
Iowa State University
March 15, 2017



Shell Oil Company
April 21, 2017

Louisiana Dept. of Natural Resources &
Les Reflections du Bayou
May 24, 2017



Fourchon Marsh Plantings

- December 2017 to May 2019
- 10 plantings
- 167 volunteers
- 15,145 herbaceous plants

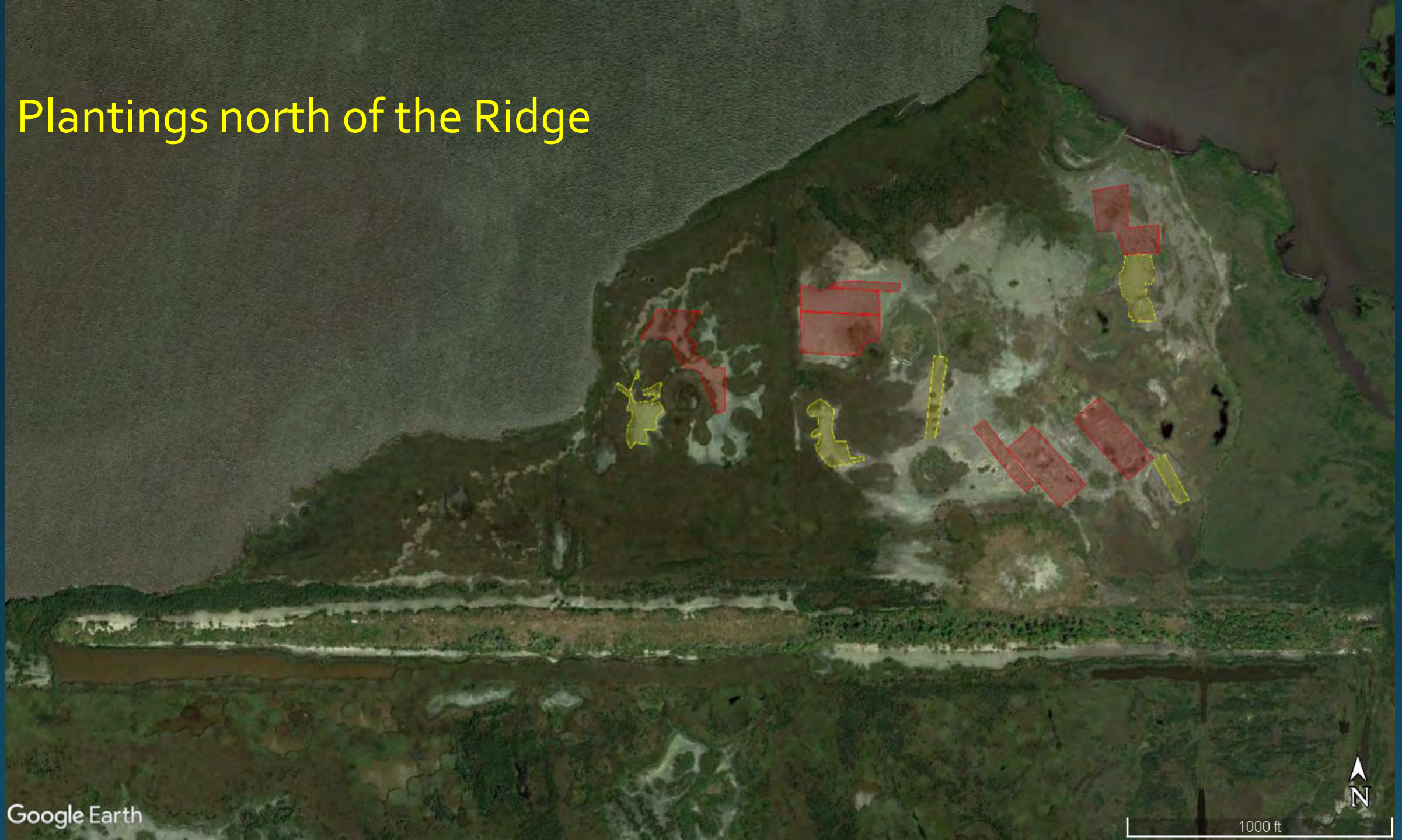
An aerial satellite view of a coastal region. A river flows from the top center towards the bottom right, eventually meeting a larger body of water. The landscape is a mix of dark green vegetation and light-colored, possibly sandy or marshy, areas. Several colored markers are overlaid on the map: a red square near the top center, a cyan rectangle to its left, a yellow square further left, a cyan square below that, and another yellow square to the right of the center. A red diamond is located on the right side of the river. In the bottom right corner, there is a north arrow pointing upwards, a scale bar labeled '900 ft', and a small inset image of a boat. The text 'Planting south of the Ridge' is written in yellow on the left side of the image.

Planting south of the Ridge

A photograph of a group of students working in a field. In the foreground, a young man in a grey t-shirt and dark shorts is using a red and white power auger to drill into the ground. He is wearing black rubber boots. A yellow measuring tape is laid out on the muddy ground in the foreground. In the background, several other students are kneeling or sitting on the ground, working on their own projects. The field is muddy with some patches of dry grass. In the far background, there is a line of tall grass and a fence. The sky is blue with white clouds.

University of Missouri Alternative Breaks
March 27, 2018

Plantings north of the Ridge





Union College (Schenectady, NY)
December 14, 2017



Union College (Schenectady, NY)
December 14, 2017



Common Ground Relief
January 9, 2018

University at Buffalo
January 25, 2018



Shell Oil Company
April 20, 2018





Appalachian State University
March 7, 2019



Appalachian State University
March 7, 2019

University of Arkansas - Monticello
May 15, 2019





University of Arkansas – Monticello
May 15, 2019



**Fourchon Maritime Forest Ridge
December 2015**

National Park Service &
Patrick F. Taylor High School
May 20, 2019



Oneida University &
Common Ground Relief
May 21, 2019





Association of Corporate Counsel – LA Chapter
May 25, 2019

Common Ground Relief
May 30, 2019





Native Plant Production Facility Expansion

February 2018



February 2018

March 2018



March 2018



March 2018



“Fool Me Once....”

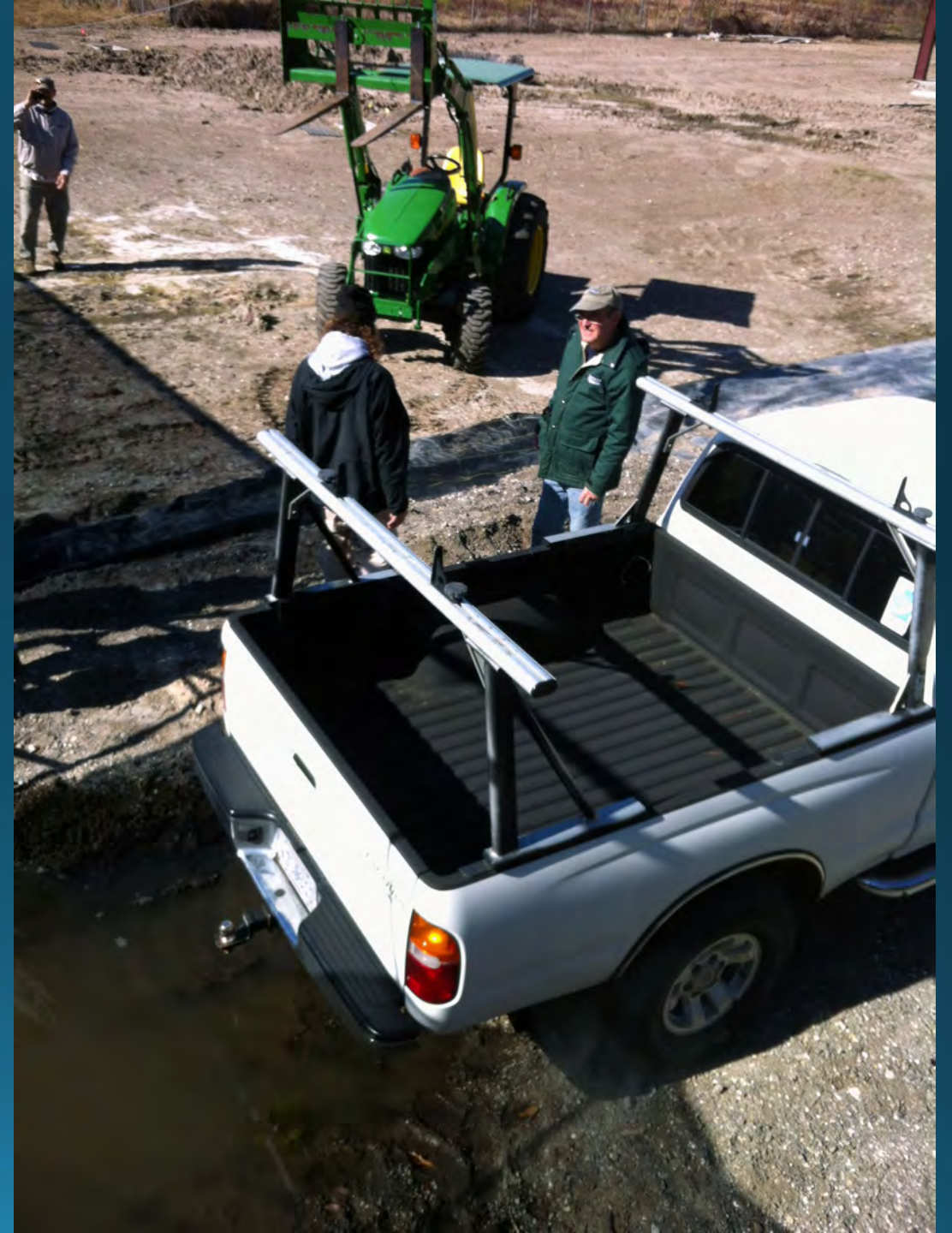


May 2011



March 2018

“Who told you we had cookies?”



“This chair doesn’t recline?”



March 2018



University of Missouri
Alternative Breaks
March 28, 2018









TNC & BTNEP's Grand Isle
Arbor Day Tree Giveaway
February 10, 2017



Hanko's Boat Trailer
March 2017



Volunteer Trailer
November 2018

Native Plant Production Facility

- 44 "Farm Days"
- 500+ volunteers



Common Ground Relief
January 5, 2018



University of Richmond – SEEDS Group
March 11, 2019

John Deere (Thibodaux)
August 8, 2018



Association of Corporate Counsel
September 22, 2018





Open Volunteer Day
June 28, 2018



Open Volunteer Day
July 11, 2018



Open Volunteer Day
July 25, 2019

Native Woody Species Grown Out for Bayou Dupont (BA-48) and Grand Liard (BA-68)

- Live oak
- Hackberry
- American beautyberry
- Persimmon
- Red mulberry
- Wax myrtle
- Yaupon





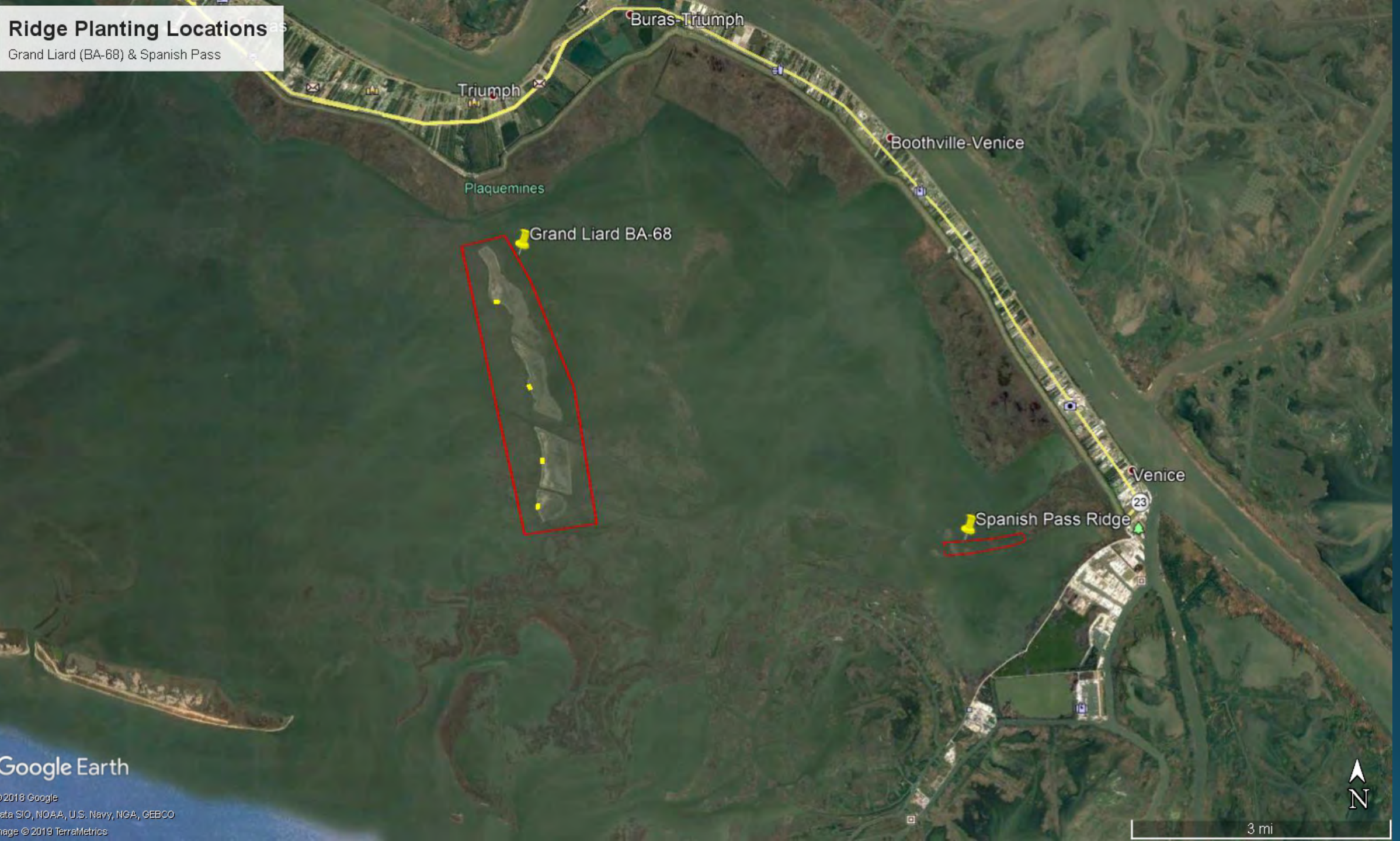
Bayou Dupont (BA-48)

Imagery date: 01/08/2019



Ridge Planting Locations

Grand Liard (BA-68) & Spanish Pass





Google Earth

© 2018 Google
Data SIO, NOAA, U.S. Navy, NGA, GEBCO
Image © 2019 TerraMetrics

Grand Liard BA-68

Experimental planting locations.

Legend

-  - Start
-  Cell

Plaquemines

Cell A - Start

Cell B - Start

Cell C - Start

Cell D - Start

Yellow Cotton Bay

Google Earth

© 2018 Google

Bay Jacques



1 mi













Spanish Pass Ridge

Venice, Louisiana

Spanish Pass Ridge

Venice

23

Tides Water Rd

Google Earth

© 2020 Google

N

1 mi



Spanish Pass Ridge

Spanish Pass Ridge Plantings

January 24 & 25, 2019

Herbaceous

1500 seashore paspalum

Woody Species

1750 red mulberry

450 salt matrimonyvine

600 assorted













ADAPTATION: A WAY OF LIFE



0:04 / 21:39



