

Restoration Opportunities For The Louisiana Iris



The five Louisiana iris species



I. nelsonii



I. giganteaerulea



I. brevicaulis



I. hexagona



I. fulva

The hybrid cultivars



The Greater New Orleans Iris Society

www.louisianairisgnois.com



Watch us on
YouTube



Find us on:
facebook®



Follow us on
Instagram

Everyday gardeners interested
in learning about and
preserving the Louisiana iris

Cultivars



Preservation of various forms of species irises



Restoration of species irises



Native irises of the Barataria Basin



I. giganteaerulea



I. fulva



VIRGINICA

BREVICAULIS

IRIS DISTRIBUTION
IN
SOUTHEASTERN
LOUISIANA
Adapted from
Viosca, 1935

FULVA

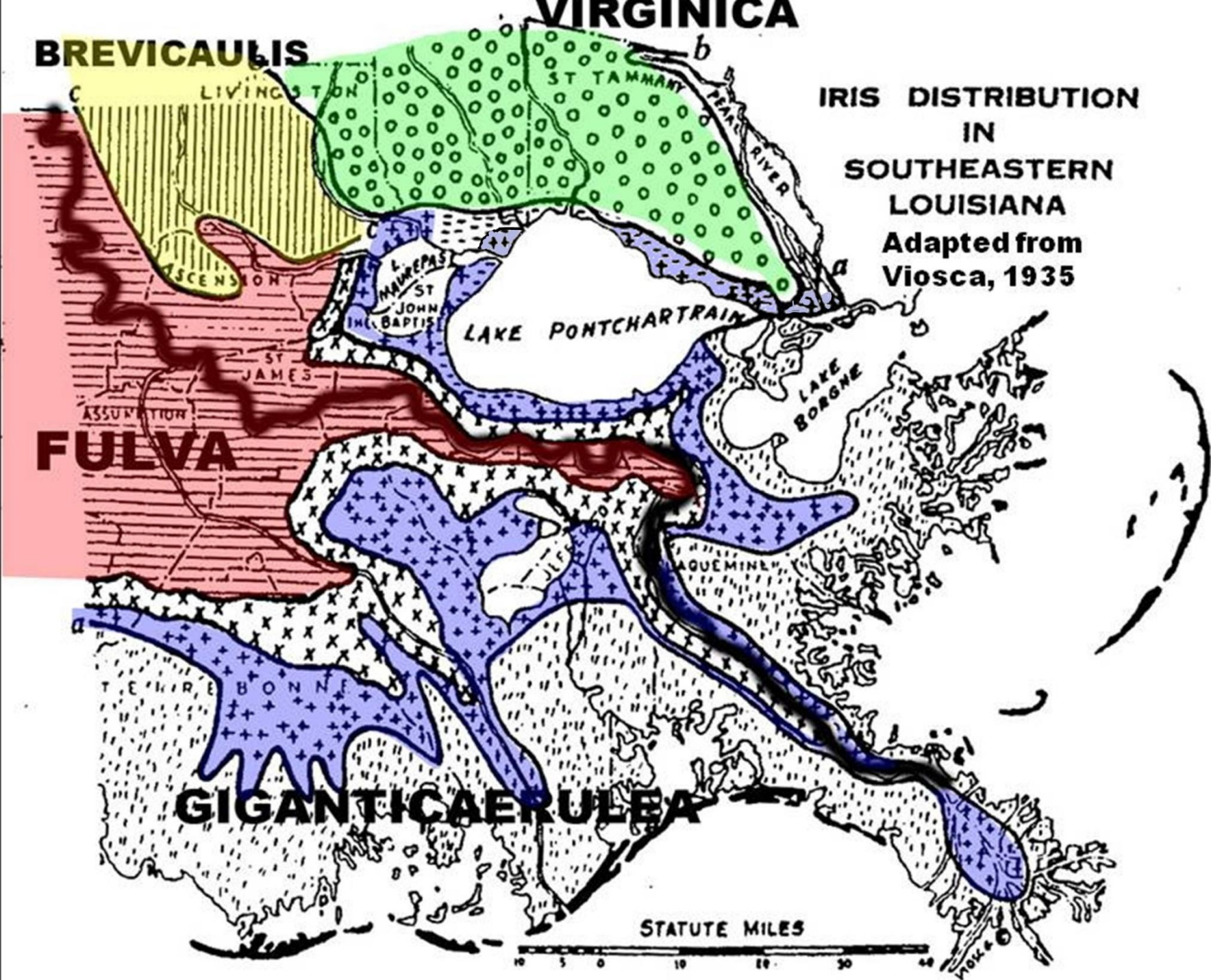
GIGANTICAERULEA

LAKE PONTCHARTRAIN

LAKE
BORNE

STATUTE MILES

10 5 0 10 20 30 40



Reasons the Louisiana irises
in the wild have been in decline:

Development

Herbicides

Salt water intrusion

Herbicides



Salt water intrusion

Mardi Gras Pass



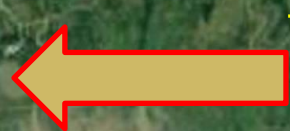
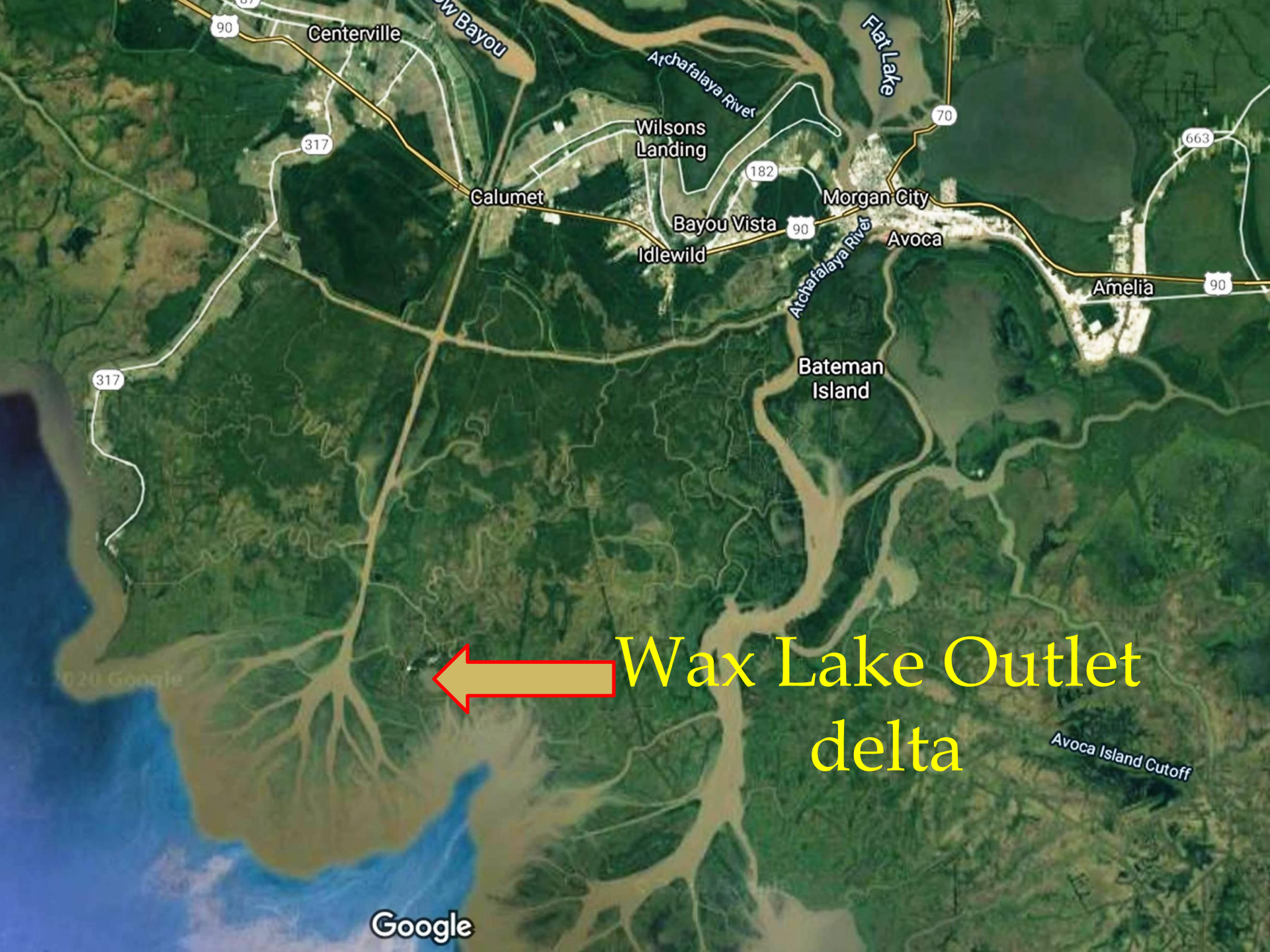


A satellite map of the Mississippi River delta region. The Mississippi River is visible in the bottom left, flowing towards the top right. The river branches out into a complex network of distributaries. A large body of water, labeled 'American Bay', is in the top right. A road labeled '23' runs along the left side of the river. Two blue arrows with red outlines point to specific locations: one points to a narrow channel labeled 'Trouble', and the other points to a location labeled 'Mardi Gras Pass'.

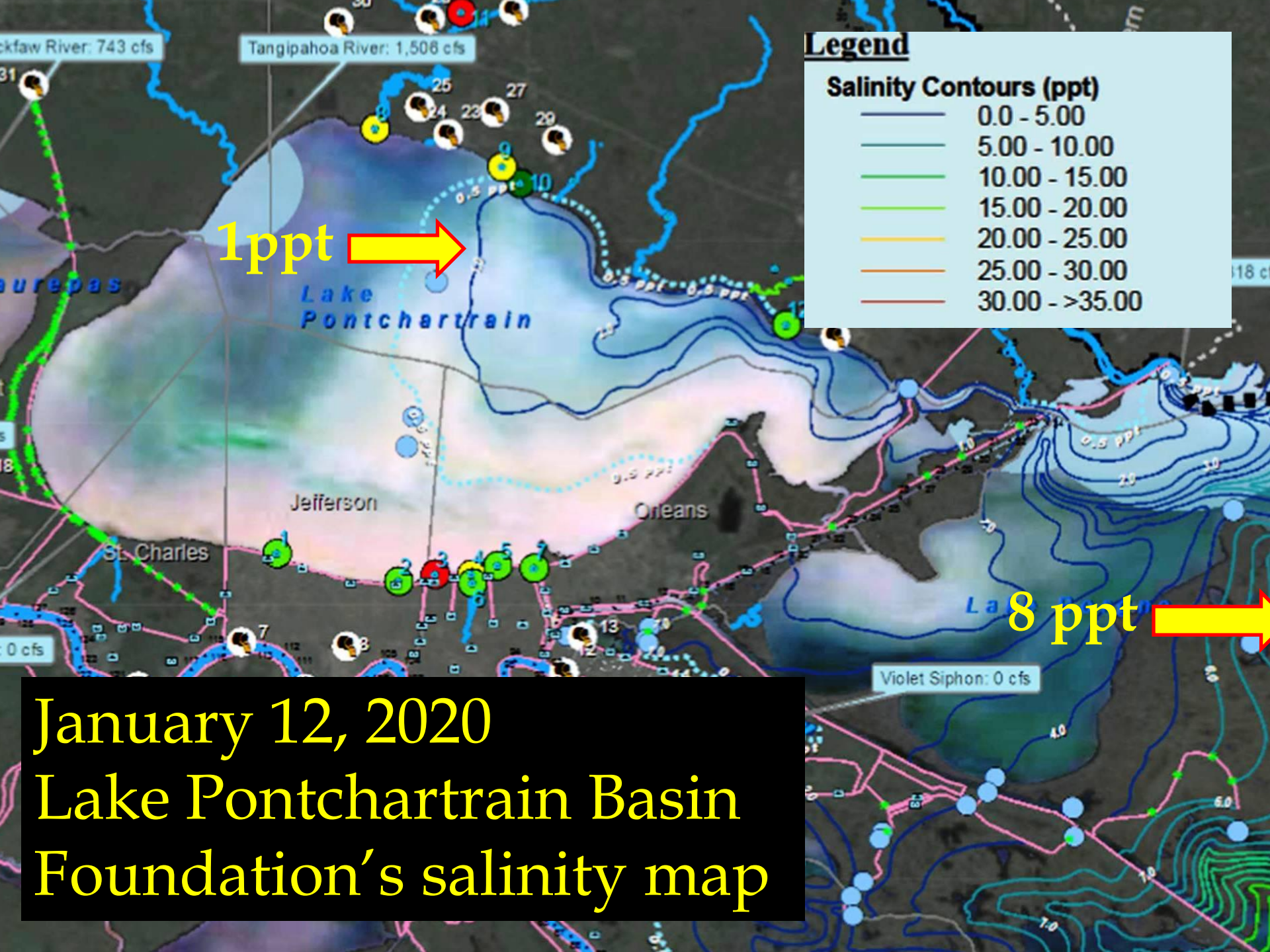
Mardi Gras Pass

Trouble

Mardi Gras Pass



Wax Lake Outlet
delta



Cypress trees and irises
belong together, so we're
giving a helping hand.



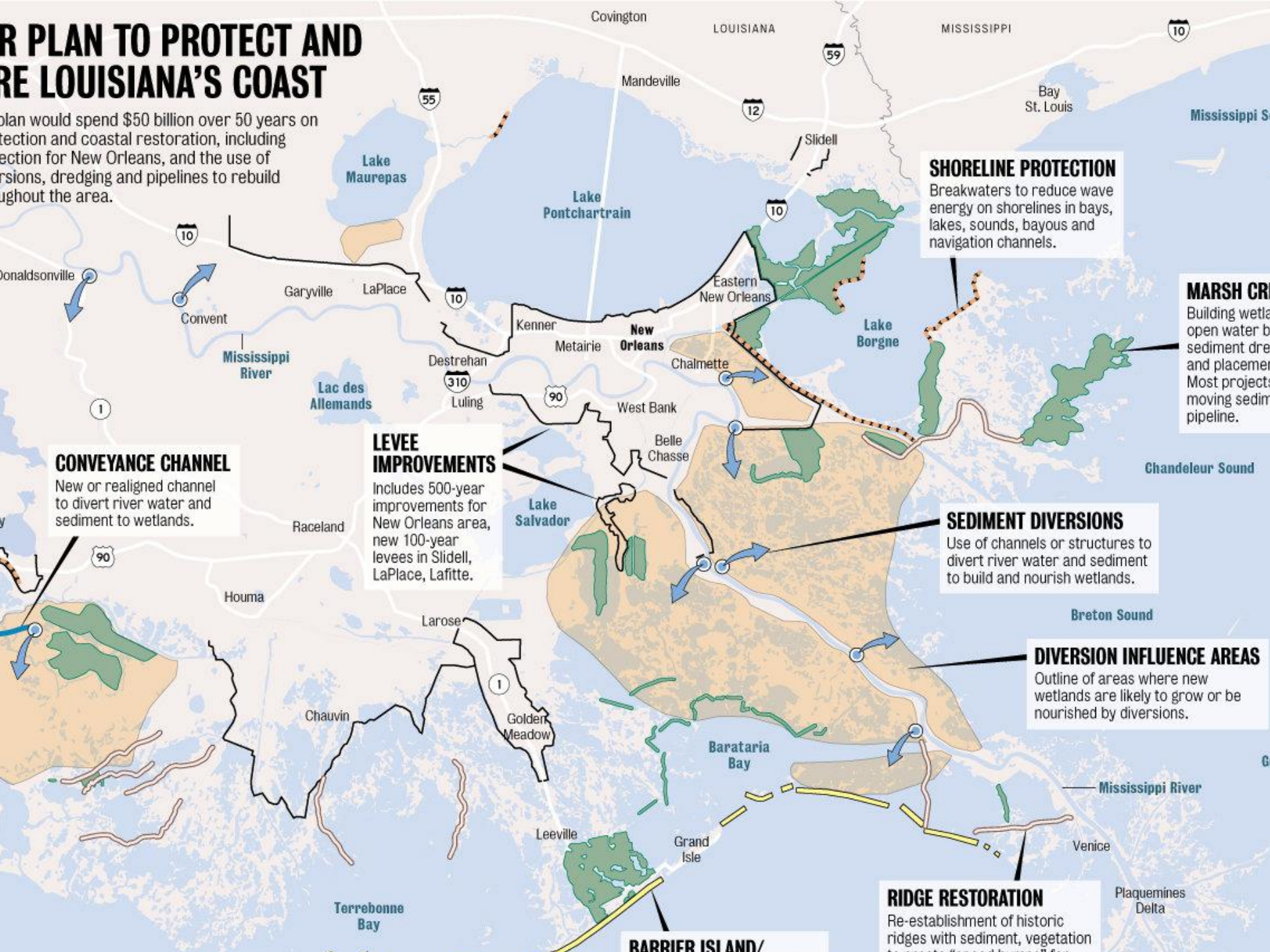
Greater New Orleans Iris Society

Iris restoration project at the Big Branch refuge marsh that was brackish water and is now fresh water.



plan would spend \$50 billion over 50 years on protection and coastal restoration, including protection for New Orleans, and the use of levees, dredging and pipelines to rebuild marshes throughout the area.

plan would spend \$50 billion over 50 years on protection and coastal restoration, including protection for New Orleans, and the use of levees, dredging and pipelines to rebuild marshes throughout the area.



VIRGINICA

BREVICAULIS

**IRIS DISTRIBUTION
IN
SOUTHEASTERN
LOUISIANA**
Adapted from
Viosca, 1935

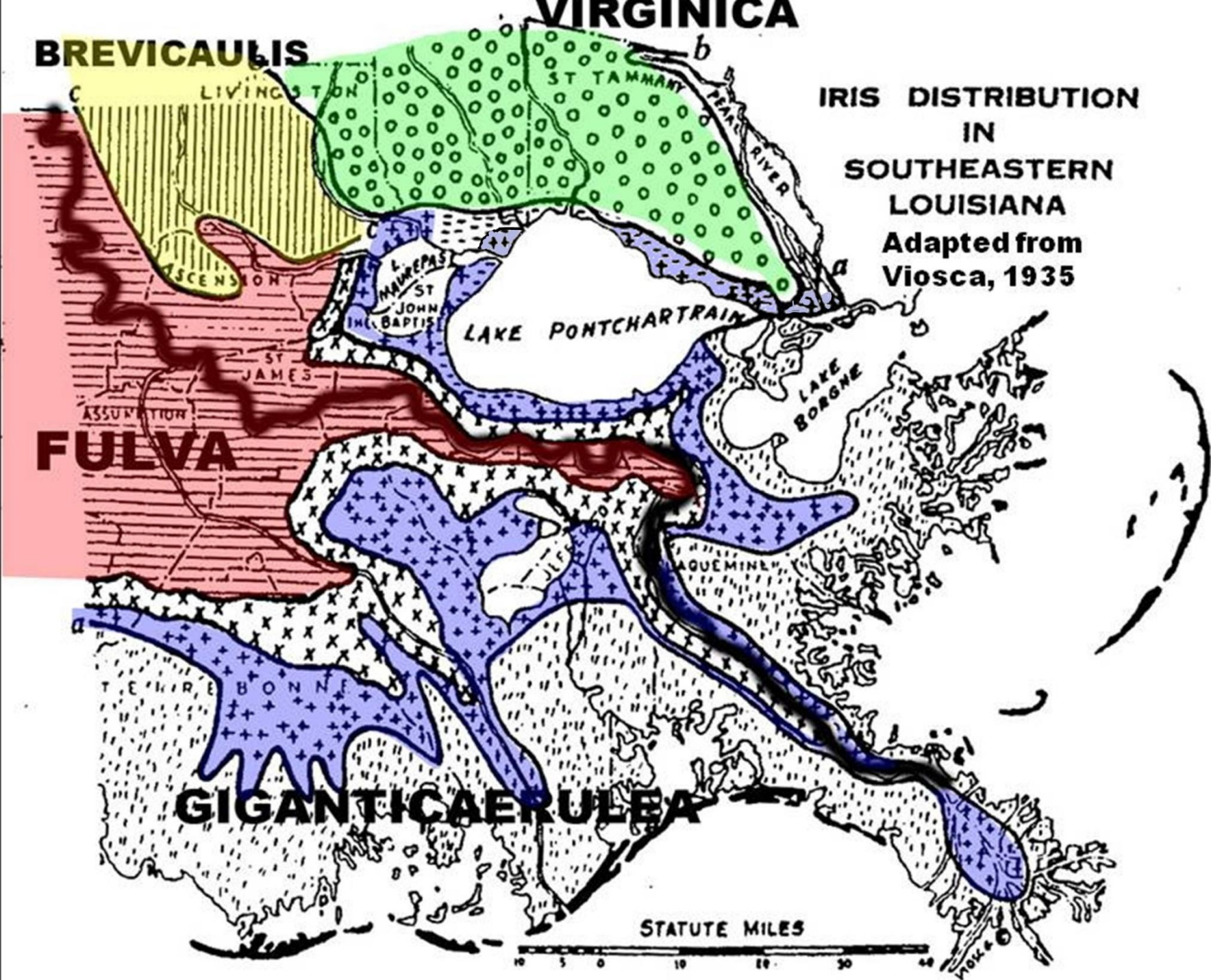
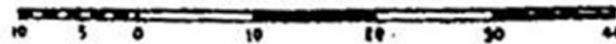
FULVA

GIGANTICAERULEA

LAKE PONTCHARTRAIN

LAKE BORGNE

STATUTE MILES



There is also marsh restoration done for wetlands permit mitigation.



“Louisiana irises are not on the list of plants I can choose from.”



Turtle Bayou Project
Bayou Sauvage Refuge

What we
want
to believe.





“Somebody, somewhere,
everyday is studying
Louisiana irises or
watching out for them.”

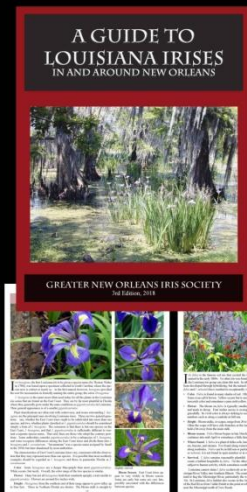




The reality

What can we do?

1. Increase awareness of species Louisiana irises with the public and managers and owners of marshlands and swamps.



The five Louisiana iris species need your help



I. nelsonii



I. brevicaulis



I. giganticaerulea



I. hexagona



I. fulva

Information on projects to reintroduce Louisiana iris species back into the marsh can be found here:

www.louisianairisgnois.com



Greater New Orleans Iris Society

A group of everyday gardeners interested in learning more about Louisiana irises and preserving the five species of this native plant.



Increase awareness of species Louisiana irises

- A. Use public boardwalks for people to safely see species Louisiana irises in their natural habitat.
- B. Enhance the number of species irises at the boardwalks.
- C. Market the boardwalks during the bloom to increase attendance.

Use public boardwalks for people to safely
see species Louisiana irises in
their natural habitat.



Bayou Sauvage
Wildlife Refuge



Town of Jean Lafitte
Boardwalk

Public boardwalks



The Black Swamp



Northlake
Nature Center



Big Branch
Wildlife Refuge



Joyce Wildlife
Management Area

Market the boardwalks to increase attendance

Six Locations to see Louisiana irises blooming in their native habitat



Jean Latitte Historical Park and Preserve



Only 20 miles south of New Orleans, the preserve is a prime locale to see irises in the wild. The Louisiana iris species, *I. giganticaerulea* and *I. fulva* inhabit the plentiful swamps and wetlands. There are extensive boardwalks and trails from which to view the native plants and wildlife.



It is a tradition for New Orleansians to make an annual trek to the preserve to see the irises in bloom.



Northlake Nature Center

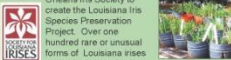


Located 45 miles north of New Orleans, Mandeville's Northlake Nature Center is the home to all five Louisiana iris species, which can be found in the beaver pond cypress swamp. The kiosks along the raised boardwalk hold display boards with detailed information on the irises.



Preserving Louisiana Irises

The Society for Louisiana Irises has partnered with the Greater New Orleans Iris Society to create the Louisiana Iris Species Preservation Project. Over one hundred rare or unusual forms of Louisiana irises that have been collected from the wild are being propagated to preserve the diversity of the species.



Bayou Sauvage Wildlife Refuge



The Bayou Sauvage Wildlife Refuge, part of the U. S. Fish and Wildlife Service, is within the city limits of New Orleans. In 2016, volunteers planted Louisiana irises in the refuge to reestablish the species *I. giganticaerulea* after they were destroyed by Hurricane Katrina flood waters.



The extensive raised boardwalk allows visitors to walk safely above the fresh water marsh.



http://www.fws.gov/refuge/Bayou_Sauvage/



See irises in the swamp!



The places to see wild Louisiana irises blooming are the swamps and wetlands where they live. The locations featured here

offer adults and children places to safely enjoy the beauty of the irises and their unique habitat from boardwalks above the swamp.



This brochure was made possible by the generous support of the Baton Rouge Fish and Wildlife Conservation Office of the U. S. Fish and Wildlife Service.

www.fws.gov/BatonRouge

A GUIDE TO LOUISIANA IRISES IN AND AROUND NEW ORLEANS



GREATER NEW ORLEANS IRIS SOCIETY
3rd Edition, 2018



Jean Latitte Bastian Preserve

The Jean Latitte Bastian Preserve, located just south of New Orleans, is a prime locale to see irises in the wild. The Louisiana iris species, *I. giganticaerulea* and *I. fulva* inhabit the plentiful swamps and wetlands. There are extensive boardwalks and trails from which to view the native plants and wildlife.

Northlake Nature Center

Located 45 miles north of New Orleans, Mandeville's Northlake Nature Center is the home to all five Louisiana iris species, which can be found in the beaver pond cypress swamp. The kiosks along the raised boardwalk hold display boards with detailed information on the irises.



Located just ten miles west of New Orleans, the St. Charles Parish-maintained recreational area near the west side boat launch offers a raised boardwalk through a cypress/swamp gum forest. The setting is the home of the tall blue *I. giganticaerulea*.

Joyce Wildlife Management Area



The Louisiana Department of Wildlife and Fisheries manages the Joyce Wildlife Management Area, which is located south of Ponchartraine and 50 miles north of New Orleans. In 2016, volunteers reintroduced *I. giganticaerulea* into the swamp, years after they were killed by hurricane salt water. The raised boardwalk has a viewing platform at its end that overlooks miles of open marsh.



Big Branch Marsh National Wildlife Refuge

Part of the U. S. Fish and Wildlife Service, the 18,000-acre Big Branch Refuge is located a few miles east of Mandeville and fifty miles north of New Orleans.

There are scattered *I. giganticaerulea* growing in areas where fresh water mixes with the brackish water of the refuge's Lake Pontchartrain shoreline marshes. The long, raised boardwalk offers sweeping views of the marsh.



www.fws.gov/refuge/big_branch_marsh/



Greater New Orleans Iris Society

A group of everyday gardeners interested in learning more about Louisiana irises and preserving the five species of this native plant.

www.louisianairisgnois.com



Find us on Facebook

What can we do?

2. Have Louisiana species irises available in significant numbers as an approved plant for future public and for private marsh restoration projects.



Increase the number of Louisiana irises available for marsh restoration projects.



Donation of irises



Iris rescue

Iris propagation



Donations of irises



Private gardens
or private lands



Iris rescue







We discovered everybody
wants to help save
the Louisiana iris!!



“Parking” irises



St. Joseph Abbey



St. Tammany
Children's Museum

“Parking” irises



Chef John Folse



USDA Research Center



Grow Dat Youth Farm



Nicholls State University

Louisiana Iris Conservation Initiative



Greater New Orleans
Iris Society

Louisiana Iris Conservation Initiative



We would like to find groups to partner with in the Barataria Basin.

Locations to have irises growing to
increase the public's awareness of
this native plant.

Funding to support Nicholls State's efforts on propagation of irises, preserve rare forms of irises and do studies to increase the efficiencies for propagating irises.

Groups to partner with
for volunteers.

Locations to Park irises.



*Labranche
wetlands, 1997*