

**Piping Plover 2014 Survey
of the Caminada Headland, Louisiana:
April 9, 2014**



A Report of the:
Barataria-Terrebonne National Estuary Program

By:
**Richard DeMay, Delaina LeBlanc, Donald Norman, Daniel O'Malley, Tori O'Malley,
Erik Johnson, Natalie Waters, and Blaire Hutchison**

Prepared for the:
Coastal Protection and Restoration Authority

Piping Plover 2014 Survey of the Caminada Headland, Louisiana: April 9, 2014

Table of Contents

Introduction.....	3
Survey Methodology.....	6
Survey Results.....	9
Acknowledgements.....	12
Appendix D.....	13
Data.....	20
Photo Credits: Richard DeMay and Delaina LeBlanc	



Introduction

Louisiana's wetland loss crises mean serious troubles for our coastal citizens, their property and livelihoods, and the productive ability of this bountiful natural system. Decades of wetland and barrier island losses are blamed for larger and larger storm surges associated with tropical storms that now routinely wreak havoc on homes and infrastructure. That same loss is also attributed to likely declines for some species of terrestrial and aquatic animals, particularly nesting seabirds. For these reasons and a myriad of others, numerous efforts have been undertaken to understand and reverse these trends if possible. Initially, it started with regional plans such as the Barataria Basin Plan followed soon after by the Barataria-Terrebonne National Estuary Program's Plan in 1996. Later, planners began looking at the coast as a whole. Published in 1998, Coast 2050 was one of the first larger scale plans to address each of the State's coastal basins. Today, years later, we're now seeing the development of the Louisiana Coastal Master Plan, last updated in 2012. Hereto this plan addresses all of the State's coastal waters and wetland habitats.

Almost occurring simultaneously with these planning efforts was the initiation of funding streams designed to provide the monetary resources needed to combat Louisiana's wetland loss problem. The Coastal Wetlands Trust Fund followed by the Coastal Wetlands Planning, Protection, and Restoration Act were the precursors to the Coastal Impact Assessment Program, Gulf of Mexico Energy Security Act of 2006 and now the Restore Act of 2012. Due to these ever increasing funding streams, Louisiana now seems poised to construct many large-scale restoration projects. While most see these projects as providing positive benefits to people and animals, short term impacts associated with active ongoing restoration efforts may pose temporary short-term problems for certain species. This project attempts to document impacts, if any, to Piping Plover and a small suite of other shorebirds that may directly result from construction activities of the CPRA's Caminada Beach and Dune Restoration Project (BA-45).

Caminada Headland Beach and Dune Restoration Project (BA-45)

Currently in the construction phase, the Caminada Headland Beach and Dune Restoration Project (BA-45) is designed to protect and preserve the structural integrity of the barrier shoreline and provide for restoration of hydrologic conditions, ecosystem processes, and habitats of the Caminada Headland (Figure 1).

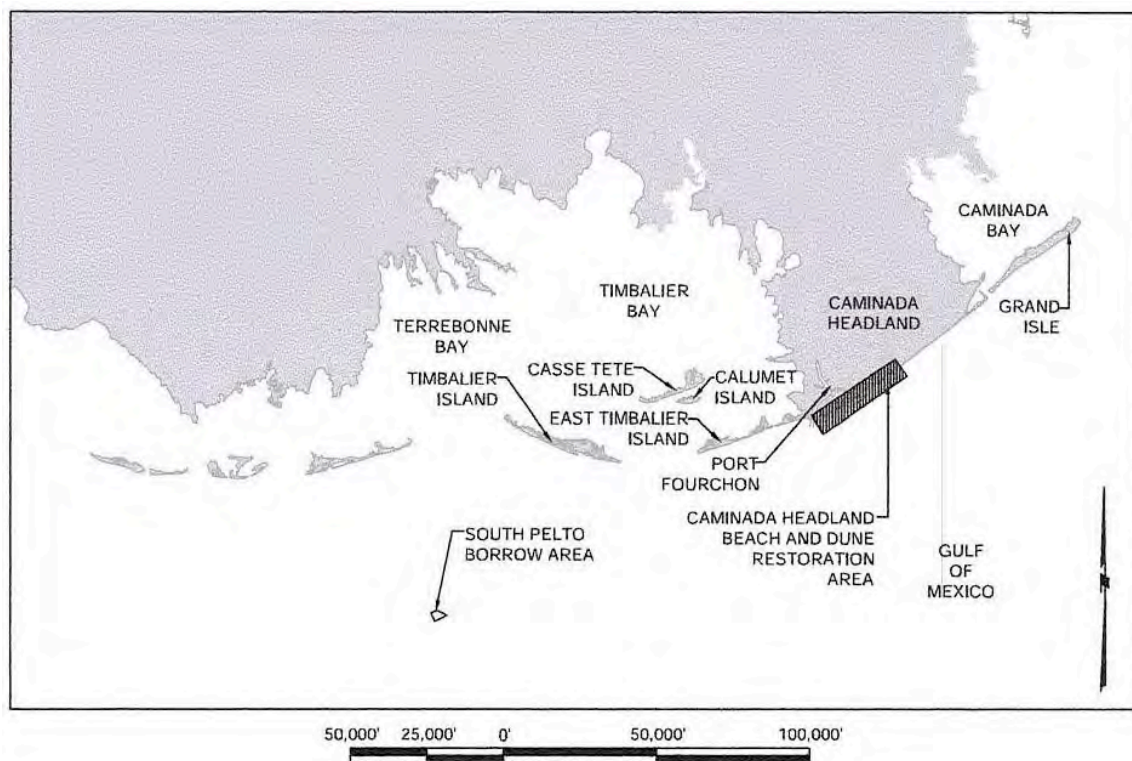


Figure 1. Location of the Caminada Headland Project.

Benefits of restoration of the headland shoreline would protect and sustain significant and unique coastal habitats important to foraging and nesting terns, plovers, gulls, and many other bird species including the threatened and endangered populations of Piping Plover (*Charadrius melodus*). Both spring/summer breeding bird surveys of nesting Wilson's Plover (*Charadrius wilsonia*) and Least Tern (*Sternula antillarum*) along with winter surveys of Piping Plover have shown the Caminada Headland to be important nesting/foraging areas for these and other birds.

In addition, the Gulf of Mexico is a key wintering area for Piping Plover with much of it designated as critical habitat under the Endangered Species Act (ESA). Data from the International Piping Plover Survey, conducted every five years since 1991, indicate that 73-93% of all wintering plovers counted have been on the shores of the Gulf of Mexico. Therefore protection and restoration of these critical habitats are warranted. Figure 2 defines both the breeding range and wintering range for this species. Figure 3 defines critical habitat for Piping Plover in the Port Fourchon area of Louisiana.



Figure 2. Piping Plover Breeding and Winter Range (courtesy of Cornell Laboratory of Ornithology).

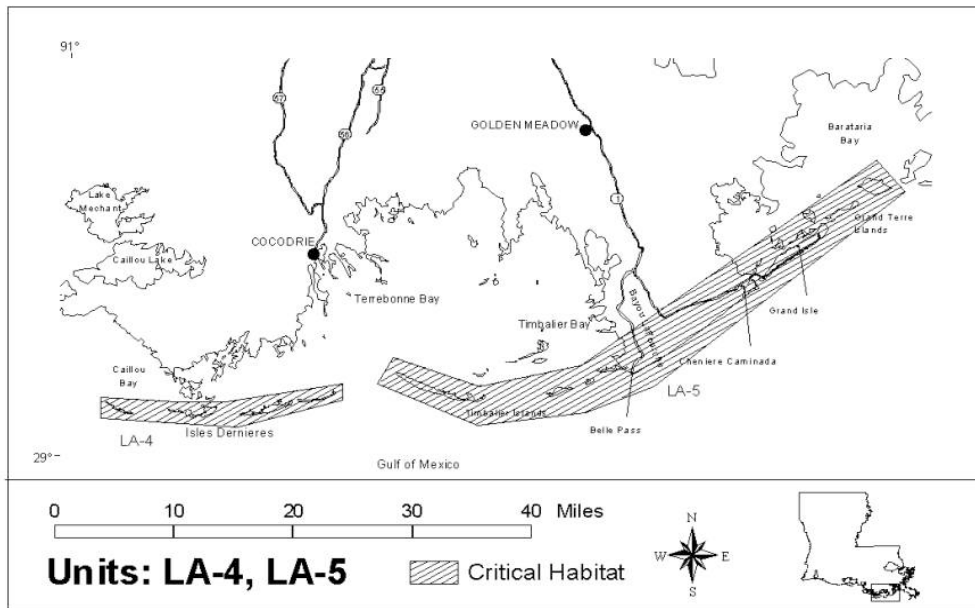


Figure 3. Critical Habitat Designated for Piping Plover along the lower Louisiana coastline.

A condition of the 404 and Coastal Use permit for the Caminada Headland Beach and Dune Restoration Project requires both winter surveys for Piping Plover and breeding bird surveys in the spring. An ongoing series of surveys/reports will be undertaken/developed prior to, during, and post construction. These reports will present the findings of the numerous surveys conducted throughout the life of the project.

Survey Methodology

Permit requirements necessitate Piping Plover surveys both prior to construction and during construction of the project following methods outlined within the Louisiana Piping Plover Non-Breeding Season Survey Guidelines with observations recorded on provided field census forms (Appendix D, FWS, 2010).

The first pre-construction survey was conducted on September 28, 2012 by a team of qualified observers who surveyed all suitable open habitats (beach, algal flat, wrack line, and other intertidal and sub-tidal flats) in an attempt to identify all Piping Plover

across much of the Caminada Headland. The September 2012 survey covered approximately 11 miles of beachfront from Belle Pass (mouth of bayou Lafourche) east to the Elmer's Island entrance road. Subsequent surveys conducted on October 30, 2012, November 28, 2012, January 11, 2013, January 24, 2013, February 6, 2013, February 20, 2013, March 7, 2013, March 20, 2013, April 5, 2013, July 29, 2013, August 12, 2013, August 28, 2013, September 11, 2013, September 25, 2013, October 9, 2013, October 21, 2013, November 6, 2013, November 20, 2013, December 4, 2013, December 18, 2013, January 15, 2014, January 31, 2014, February 12, 2014, February 27, 2014, March 12, 2014 and March 26, 2014 employed the same methodology as previous surveys. The geographic extent of these more recent surveys may have covered more beachfront habitats. Surveys conducted prior to July 2013 were pre-construction surveys while all subsequent surveys were during the construction phase of the restoration project.

This survey, completed on April 9, 2014, also utilized the same methodology as previous surveys. Coverage for this twenty-seventh survey included the geographic area between Belle Pass on the west to Caminada Pass on the east including Elmer's Island; a total distance of 13 miles (Figure 4).

The study site was divided up into 4 - 5 sections and was surveyed on foot. Surveyors walked the length of each section, using binoculars and spotting scopes to identify target species and document band combinations. Parts of the survey site were expansive and surveyors had to spread out across the beach to account for birds located among the various habitats.

Each surveyor collected the following: coordinates, number of individuals, color band combinations if applicable, and photo documentation if possible. Additional data collected included: 1) location on the beach (bay, gulf shoreline or open beach) and 2) behavioral activity (loafing, foraging, aggressive behavior, and/or flying.)



Figure 4. Green line represents the geographic extent of the survey.

Surveyors collected this information for Piping Plovers (*Charadrius melodus*), Snowy Plovers (*Charadrius nivosus*), Wilson's Plover (*Charadrius wilsonia*), and Red Knot (*Calidris canutus*), and counted and identified any other bird species encountered.

Survey Results

The survey conducted on April 9, 2014 resulted in the detection of 71 Piping Plover, zero Snowy Plover, one hundred twenty-two Wilson's Plover, and one Red Knot. Figure 5 depicts the distribution of birds for this particular survey.

Of the 71 Piping Plovers encountered, 16 individuals were color banded. The majority of plovers were located on the bayside foraging on exposed mudflats. Eleven individuals were observed during previous surveys.

Figure 6 provides data from a nearby water gauge showing tidal range during the survey period. The data clearly indicate low tide rising during the bulk of the survey period.

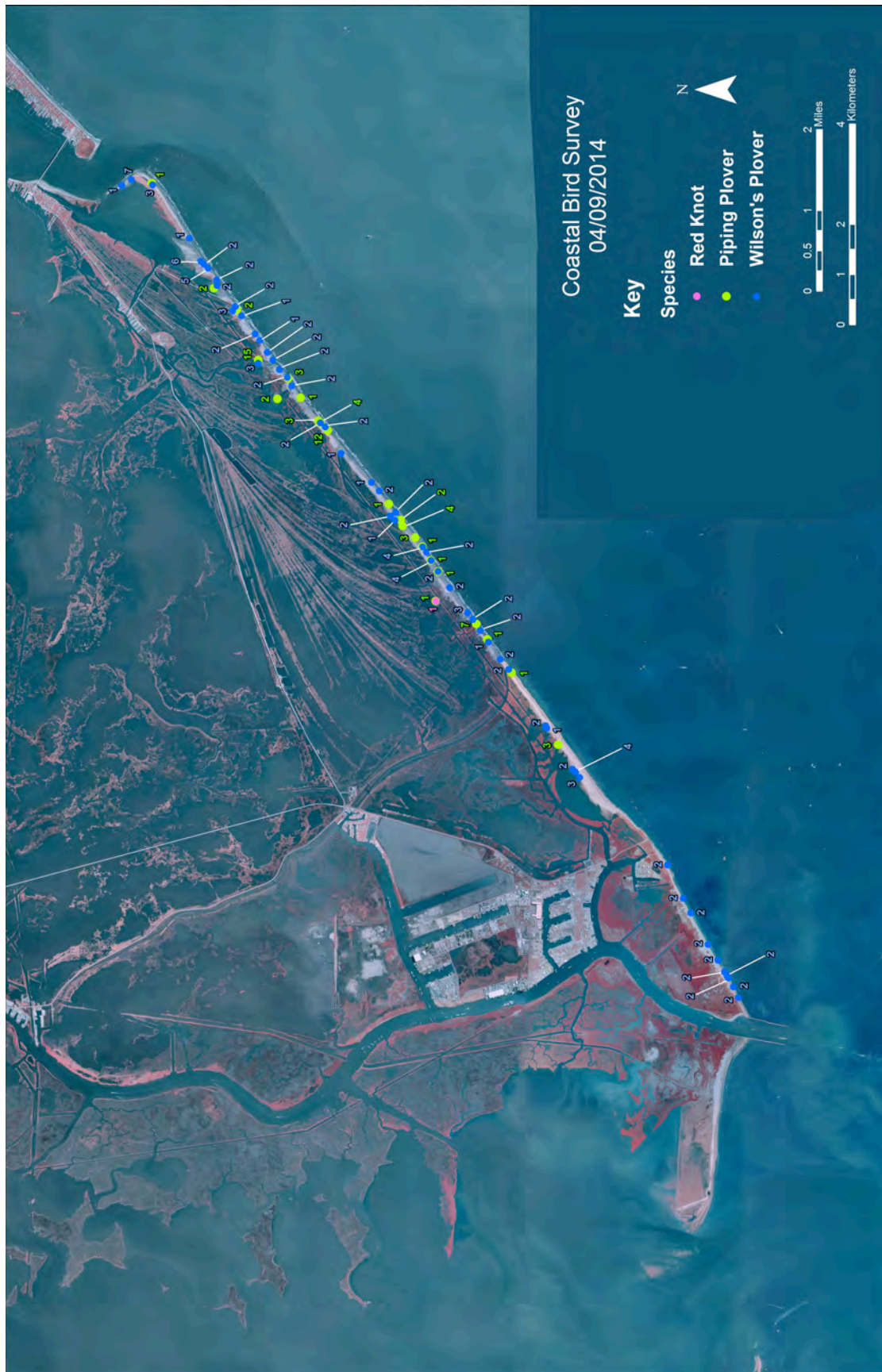


Figure 5. Locations and abundance of select shorebird species.



Figure 6. Predicted Tidal Range and Water Levels prior to and during the day of the survey.



Figure 7: Banded Wilson's Plover observed on April 9, 2014 survey.

Acknowledgments:

We thank the Coastal Protection and Restoration Authority for funding this project. We thank the Wisner Foundation for their support of this project and their approval to access their property. We also would like to thank the following surveyors who helped to make this project possible. They include Delaina LeBlanc, Dan O'Malley, Donald Norman, Tori O'Malley, Dave Patton, Donna Dittmann, Steve Cardiff, Michael Plauchè, Lori Booth, Jeff Leichty, Nicole Norrelli, Heather Fraser, Natalie Waters, Katarina Hashagen, Michael Massimi, Clint Jeske, Scott Walter, and Erik Johnson. We also thank Robbie Smith (Greater Lafourche Port Commission) and Forrest Trvirca, III (Wisner Foundation) for providing logistical support.

APPENDIX D

Non-breeding Piping Plover Survey Guidelines

Louisiana Piping Plover Non-Breeding Season Survey Guidelines

The purpose of these guidelines is to assess and/or monitor piping plover use of coastal restoration features related to the Barataria Basin Barrier Shoreline Restoration Project. Survey locations should include the coastal restoration features plus adjacent suitable shorebird habitat (i.e., intertidal beaches, mud flats, sand flats, algal flats, wash-over passes, and associated dunes and flats above annual high tide). Monitoring should be conducted July 15 through May 15 to follow the International Shorebird Survey (ISS) census dates listed below. The ISS schedule usually results in three surveys per month. If this is not feasible, try to do at least two surveys per month on the ISS census dates. Surveys should be conducted on ISS dates plus or minus two days. For example, a survey scheduled for the 15th could be conducted on any day between the 13th through the 17th of that month.

Spring Migration

February 25

March 5

March 25

April 5

April 15

April 25

May 5

May 15

Fall Migration

July 15

July 25

August 5

August 15

August 25

September 5

September 15

September 25

October 5

Winter

October 15

October 25

November 5

November 15

November 25

December 5

December 15

December 25

January 5

January 15

January 25

February 5

February 15

To the extent possible, surveys should be conducted when birds are foraging. The best time is at low tide, but surveys can also be conducted on a falling or rising tide provided that the foraging areas are not completely covered. During high tide, birds will be roosting. Although Piping Plovers often roost near foraging areas, the birds will be more difficult to locate. Avoid conducting surveys during poor weather conditions (e.g. high winds, rain).

Methods

In most cases surveys will be conducted by foot. All terrain vehicles (ATVs) may be used to expedite the transport of observers over long stretches of linear routes (“leapfrogging” teams down a beach in 0.5 to 1 mile increments), but all bird counting will be conducted while walking. **(Driving on vegetated areas shall not be permitted. Any ATV use should be coordinated with the Louisiana Department of Wildlife and Fisheries” Isles Dernieres Wildlife Refuge management staff.)** Birds on exposed mudflats that may be inaccessible by foot should be counted from boats. Each survey crew should use their best professional judgment on the most efficient way to conduct the survey and should document in detail if any deviations to these guidelines are deemed necessary.

Observers should work in teams of two to four people, depending on the width of the beach and beach/tidal interface. Wide coastal beaches will require a greater number of observers in order to assure that birds are not missed on the back (aft) side of the dune. Observers working on beaches that contain moderate to high dunes should climb them every 0.5 to 1 mile and look for wash-over flats and pools that may not be visible from the beach. Coastal islands will be surveyed on both the gulf and bay sides (this may require multiple teams of observers in order to finish the surveys in a timely manner).

Piping Plover locations will be recorded with global positioning system (GPS) units. GPS locations will be recorded in universal transverse Mercator (UTM) map datum NAD 83 CONUS. Each survey team should carry aerial photography of the survey route so that new breaks (cuts) in the beach or island can be noted on the survey maps. Habitat

data will also be collected and will include foraging substrate, portion of the beach used and side of the island on which the birds are found (see attached data sheet). These habitat criteria have been adapted from the 2006 International Winter Piping Plover Census organized by the U.S. Geological Survey. Behavioral data (e.g., foraging, roosting, preening, bathing, flying, aggression, walking) of Piping Plovers when seen should also be documented.

Negative data is as important as positive data. Indicate when surveys have been done and no birds were observed. Although Piping Plovers are the target species, any additional observations of other species would help the U. S. Fish and Wildlife Service to identify shorebird concentration areas and management needs.

F. Numbers, behaviors, habitat types, and GPS location(s) of Piping Plovers observed (mark on map if possible).

[illegible]

G Mode(s) of transportation:

 X Foot Car/Truck ATV Boat Airboat Other

H. Habitat (shoreline) covered: 13 miles (please calculate using aerial photograph's scale)

I. Observers: Tori O'Malley, Scott Walter, Nicole Norelli, Heather Fraser, Delaina LeBlanc,
Richard DeMay, and Natalie Waters

J. Additional comments or notes:

K. Additional species encountered (for flying flocks lump as peeps and estimate number). Species of special interest are listed below; please add any additional species.

OTHER SPECIES	TOTAL#	OTHER SPECIES	TOTAL#
Reddish Egret	2		
Marbled Godwit	0		
Red Knot	1		
Western Sandpiper	6		
Stilt Sandpiper	0		
Short-billed/Long-billed Dowitcher	344		
Snowy Plover	0		
Wilson's Plover	122		
Long-billed Curlew	0		
American Oystercatcher	0		

TARGET BIRDS OBSERVED:

DATE	OBSERVER	SPECIES	COORDINATES	#	UL	BANDS/FLAGS			
						LL	UR	LR	
4/9/14	SW	PIPL	29.14416 -90.12358	3	-	-	-	-	
4/9/14	SW	PIPL	29.14291 -90.12549	1	Y - Flag	NV	NV	NV	
4/9/14	SW	PIPL	29.14141 -90.12834	1	-	-	-	-	
4/9/14	SW	PIPL	29.14018 -90.13061	1	NV	NV	NV	NV	
4/9/14	SW	PIPL	29.13357 -90.14156	7	-	-	-	-	
4/9/14	SW	PIPL	29.13168 -90.14478	1	Y - Flag	NV	S	NV	
4/9/14	SW	PIPL	29.12745 -90.15174	1	-	-	-	-	
4/9/14	TO	PIPL	29.14634 -90.12113	4	-	-	-	-	
4/9/14	TO	PIPL	29.14075 -90.13666	1	-	-	-	-	
4/9/14	TO	PIPL	29.11939 -90.16673	3	G - Flag	R	-	K/W	
4/9/14	NN	PIPL	29.16628 -90.09033	3	-	-	-	-	
4/9/14	NN	PIPL	29.16406 -90.09432	1	-	-	-	-	
4/9/14	NN	PIPL	29.16100 -90.09912	3	Y - Flag	NV	NV	NV	
4/9/14	NN	PIPL	29.16067 -90.09958	4	G - Flag	-	S	O/R	
4/9/14	NN	PIPL	29.15934 -90.10114	12	S	Y/G	LB - Flag	R/R	
4/9/14	NN	PIPL	29.15934 -90.10114	-	S	K/K	Y - Flag	P	
4/9/14	NN	PIPL	29.15934 -90.10114	-	G - Flag	Y/Y	-	B/G	
4/9/14	NN	PIPL	29.15934 -90.10114	-	S	V/G	Y - Flag	P	
4/9/14	NN	PIPL	29.15934 -90.10114	-	S	P/G	Y# - Flag	LB/LB	
4/9/14	NN	PIPL	29.15934 -90.10114	-	S	-	NV	-	
4/9/14	NN	PIPL	29.14872 -90.11654	1	-	-	-	-	

DATE	OBSERVER	SPECIES	COORDINATES	#	UL	BANDS/FLAGS			
						LL	UR	LR	
4/9/14	NN	PIPL	29.14663 -90.11987	2	-	-	-	-	
4/9/14	RD	PIPL	29.16825 -90.09444	2	LB - Flag	R/R	S	P/W	
4/9/14	NN	PIPL	29.17515 -90.07595	2	-	-	-	-	
4/9/14	RD	PIPL	29.17157 -90.08640	15	S	K	Y - Flag		
4/9/14	RD	PIPL	29.17157 -90.08640	-	G - Flag	B/G	-	W/W	
4/9/14	RD	PIPL	29.17157 -90.08640	-	A	B/K	G - Flag	-	
4/9/14	DL	PIPL	29.17913 -90.07144	2	-	-	-	-	
4/9/14	DL	PIPL	29.18984 -90.04959	1	-	-	-	-	
4/9/14	TO	REKN	29.14073 -90.13668	1	-	-	-	-	
4/9/14	NW	WIPL	29.10030 -90.19187	2	-	-	-	-	
4/9/14	NW	WIPL	29.09759 -90.19880	2	-	-	-	-	
4/9/14	NW	WIPL	29.09631 -90.20183	2	-	-	-	-	
4/9/14	NW	WIPL	29.09336 -90.20834	2	-	-	-	-	
4/9/14	NW	WIPL	29.09168 -90.21163	2	-	-	-	-	
4/9/14	NW	WIPL	29.09052 -90.21409	2	-	-	-	-	
4/9/14	NW	WIPL	29.09007 -90.21487	2	-	-	-	-	
4/9/14	NW	WIPL	29.08984 -90.21534	2	-	-	-	-	
4/9/14	NW	WIPL	29.08900 -90.21717	2	-	-	-	-	
4/9/14	NW	WIPL	29.08815 -90.21940	2	-	-	-	-	

DATE	OBSERVER	SPECIES	COORDINATES	#	UL	BANDS/FLAGS		
						LL	UR	LR
4/9/14	SW	WIPL	29.14287 -90.12552	4	-	-	-	-
4/9/14	SW	WIPL	29.14220 -90.12663	2	-	-	-	-
4/9/14	SW	WIPL	29.14140 -90.12832	4	-	-	-	-
4/9/14	SW	WIPL	29.14019 -90.13062	2	-	-	-	-
4/9/14	SW	WIPL	29.13818 -90.13401	2	-	-	-	-
4/9/14	SW	WIPL	29.13505 -90.13924	3	-	-	-	-
4/9/14	SW	WIPL	29.13412 -90.14064	2	-	-	-	-
4/9/14	SW	WIPL	29.13288 -90.14292	2	-	-	-	-
4/9/14	SW	WIPL	29.13146 -90.14535	1	-	-	-	-
4/9/14	SW	WIPL	29.12941 -90.14891	2	-	-	-	-
4/9/14	SW	WIPL	29.12798 -90.15102	2	-	-	-	-
4/9/14	TO	WIPL	29.12156 -90.16276	2	-	-	-	-
4/9/14	TO	WIPL	29.12135 -90.16329	1	-	-	-	-
4/9/14	TO	WIPL	29.11695 -90.17179	2	-	-	-	-
4/9/14	TO	WIPL	29.11641 -90.17239	4	-	-	-	-
4/9/14	TO	WIPL	29.11569 -90.17353	3	-	-	-	-
4/9/14	NN	WIPL	29.16643 -90.09009	2	-	-	-	-
4/9/14	NN	WIPL	29.16562 -90.09184	2	-	-	-	-
4/9/14	NN	WIPL	29.16067 -90.09958	2	-	-	-	-
4/9/14	NN	WIPL	29.15979 -90.10044	2	-	-	-	-

DATE	OBSERVER	SPECIES	COORDINATES	#	UL	BANDS/FLAGS		
						LL	UR	LR
4/9/14	NN	WIPL	29.15174 -90.11206	1	-	-	-	-
4/9/14	NN	WIPL	29.15042 -90.11385	2	-	-	-	-
4/9/14	NN	WIPL	29.14759 -90.11831	2	-	-	-	-
4/9/14	RD	WIPL	29.15709 -90.10594	1	-	-	-	-
4/9/14	RD	WIPL	29.14852 -90.11901	2	-	-	-	-
4/9/14	RD	WIPL	29.14772 -90.11989	1	-	-	-	-
4/9/14	NN	WIPL	29.17539 -90.07532	2	-	-	-	-
4/9/14	NN	WIPL	29.17432 -90.07725	1	-	-	-	-
4/9/14	NN	WIPL	29.17197 -90.08107	2	-	-	-	-
4/9/14	NN	WIPL	29.17117 -90.08239	1	-	-	-	-
4/9/14	NN	WIPL	29.16985 -90.08489	2	-	-	-	-
4/9/14	NN	WIPL	29.16890 -90.08647	2	-	-	-	-
4/9/14	NN	WIPL	29.17154 -90.08708	3	G	K	-	A/W
4/9/14	NN	WIPL	29.16775 -90.08848	2	-	-	-	-
4/9/14	RD	WIPL	29.17590 -90.07620	3	-	-	-	-
4/9/14	DL	WIPL	29.17860 -90.07089	2	-	-	-	-
4/9/14	DL	WIPL	29.17864 -90.06979	2	-	-	-	-
4/9/14	DL	WIPL	29.18009 -90.06730	5	-	-	-	-
4/9/14	DL	WIPL	29.18082 -90.06649	2	-	-	-	-
4/9/14	DL	WIPL	29.18141 -90.06588	6	-	-	-	-

DATE	OBSERVER	SPECIES	COORDINATES	#	UL	BANDS/FLAGS			
						LL	UR	LR	
4/9/14	DL	WIPL	29.18333 -90.06108	1	-	-	-	-	-
4/9/14	DL	WIPL	29.18972 -90.04995	3	-	-	-	-	-
4/9/14	DL	WIPL	29.19350 -90.04875	7	G	W	-	A/G	
4/9/14	DL	WIPL	29.19524 -90.04988	1	-	-	-	-	-

TOTAL PIPL: 71

TOTAL BANDED PIPL: 16

MINIMUM # PIPL RESIGHTED FROM EARLIER SURVEYS: 11

MAXIMUM # PIPL RESIGHTED FROM EARLIER SURVEYS: 11

TOTAL REKN: 1

TOTAL SNPL: 0

TOTAL WIPL: 122

SPECIES: PIPL – Piping Plover, SNPL – Snowy Plover, WIPL – Wilson’s Plover, REKN - Red Knot

BAND/FLAG Colors: LB-Light Blue, G-Green, Y-Yellow, P-Pink, HP-Hot Pink, LG-Light Green, W-White, A-Gray, K-Black, B-Blue, R-Red, S-Metal, MG-Mint Green, O=Orange, T=Tan, V=Violet

BAND/FLAG Positions: UL-Upper Left, LL-Lower Left, UR-Upper Right, LR-Lower Right

OBSERVERS: DL-Delaina LeBlanc, TO-Tori O'Malley, NW-Natalie Waters, SW-Scott Walter, RD-Richard DeMay, NN-Nicole Norelli,
HF-Heather Fraser

TOTAL BIRDS OBSERVED:

9-Apr-14

[illegible]

Double-crested Cormorant	147	2	5	15	0	26	15	1	26	123	360
American White Pelican	0	0	0	15	0	1	0	0	0	15	31
Brown Pelican	70	0	0	32	33	0	0	11	127	19	292
Least Bittern	0	0	400	0	0	0	0	0	0	0	400
American Bittern	0	0	0	0	0	0	0	0	0	0	0
Great Blue Heron	1	0	0	3	0	0	0	0	0	0	4
Great Egret	36	4	0	17	0	5	0	0	0	0	62
Snowy Egret	5	0	0	12	0	0	0	0	0	0	17
Little Blue Heron	0	0	0	0	0	0	0	0	0	0	0
Tricolored Heron	1	0	0	1	0	1	0	0	0	0	3
Reddish Egret	1	0	0	0	0	1	0	0	0	0	2
Cattle Egret	0	0	1	0	0	0	0	0	0	0	1
Green Heron	0	0	0	0	0	0	0	0	0	1	1
Black-crowned Night-Heron	0	0	0	0	0	0	0	0	0	0	0
Yellow-crowned Night-Heron	0	0	0	0	0	0	0	0	0	0	0
White Ibis	0	0	0	0	0	0	0	0	0	0	0
Plegadis	0	0	0	0	0	0	0	0	0	0	0
Roseate Spoonbill	0	14	0	0	0	0	0	0	0	0	14
Osprey	0	1	0	1	0	0	0	0	0	0	2
Northern Harrier	0	0	0	2	0	1	0	1	0	0	4
Rough-legged Hawk	0	0	0	0	0	0	0	0	0	0	0
Cooper's Hawk	0	0	0	0	0	0	0	0	0	0	0
Buteo Sp.	0	2	0	0	0	0	0	0	0	0	2
Clapper Rail	0	1	0	3	0	3	0	2	0	4	13
Sora	0	0	0	0	0	0	0	0	0	0	0
Black-bellied Plover	0	0	5	23	0	10	7	0	4	10	59
American Golden-Plover	0	0	0	0	0	0	0	0	0	0	0
Snowy Plover	0	0	0	0	0	0	0	0	0	0	0
Wilson's Plover	20	0	26	12	13	4	15	3	22	7	122
Semipalmated Plover	0	0	27	15	0	13	28	0	5	20	108
Piping Plover	0	0	15	8	26	2	2	15	1	2	71
Killdeer	0	0	0	0	0	0	0	0	0	0	0
American Oystercatcher	0	0	0	0	0	0	0	0	0	0	0
Black-necked Stilt	0	0	0	0	0	0	0	0	0	0	0
American Avocet	0	0	0	0	0	0	0	0	0	0	0
Spotted Sandpiper	0	0	0	0	0	0	0	0	0	0	0

Greater Yellowlegs	0	0	0	1	0	0	0	0	0	0	1
Solitary Sandpiper	0	0	0	0	0	0	0	0	0	0	0
Willet	0	0	0	1	0	2	0	0	0	3	6
Lesser Yellowlegs	0	0	0	0	0	0	0	0	0	0	0
Greater/Lesser Yellowlegs	0	0	0	0	0	0	0	0	0	0	0
Whimbrel	0	0	0	0	0	0	0	0	0	0	0
Long-billed Curlew	0	0	0	0	0	0	0	0	0	0	0
Marbled Godwit	0	0	0	0	0	0	0	0	0	0	0
Ruddy Turnstone	2	0	6	15	8	0	7	0	0	0	38
Red Knot	0	0	0	1	0	0	0	0	0	0	1
Sanderling	44	0	204	7	10	1	17	0	131	2	416
Semipalmated Sandpiper	0	0	0	0	0	0	0	0	0	0	0
Western Sandpiper	0	0	5	0	0	0	1	0	0	0	6
Semipalmated/Western Plover	0	0	0	16	0	0	0	0	0	0	16
Least Sandpiper	0	0	0	0	0	0	0	1	0	2	3
Pectoral Sandpiper	0	0	0	0	0	0	0	0	0	0	0
Baird's Sandpiper	0	0	0	0	0	0	0	0	0	0	0
Dunlin	0	0	6	450	0	68	8	0	0	24	556
Western Sandpiper/Dunlin	0	0	0	0	0	0	0	0	0	0	0
Buff-breasted Sandpiper	0	0	0	0	0	0	0	0	0	0	0
Stilt Sandpiper	0	0	0	0	0	0	0	0	0	0	0
peep sp.	0	0	0	0	100	0	0	45	0	0	145
Short-billed Dowitcher	0	0	0	0	0	12	0	12	0	0	24
Long-billed Dowitcher	0	0	0	0	0	0	0	0	0	0	0
Short-billed/Long-billed Dowitcher	0	0	0	320	0	0	0	0	0	0	320
Wilson's Snipe	0	0	0	0	0	0	0	0	0	0	0
shorebird sp.	0	0	0	0	0	0	0	0	0	0	0
Pomarine Jaeger	0	0	0	0	0	0	0	0	0	0	0
Bonaparte's Gull	0	0	0	0	0	0	0	0	0	0	0
Laughing Gull	321	5	24	64	12	48	3	0	4	0	481
Ring-billed Gull	0	0	1	1	0	2	0	0	8	5	17
Herring Gull	21	0	7	4	2	0	1	0	25	6	66
Lesser Black-backed Gull	1	0	0	0	0	0	0	0	0	0	1
Glaucous Gull	0	0	0	0	0	0	0	0	0	0	0
Gull sp.	0	0	0	0	0	0	0	0	0	0	0

Least Tern	2	0	0	48	0	3	5	10	4	0	72
Gull-billed Tern	0	0	0	0	0	0	0	3	0	0	3
Caspian Tern	5	0	0	0	0	3	0	0	2	5	15
Black Tern	0	0	0	0	0	0	0	0	0	0	0
Common Tern	0	0	0	0	0	0	0	0	0	0	0
Forster's Tern	33	0	18	38	0	29	2	0	0	2	122
Royal Tern	271	0	31	30	0	5	0	0	1	54	392
Sandwich Tern	0	0	11	0	0	17	0	0	0	84	112
Tern sp.	0	0	0	0	0	0	0	0	0	0	0
Black Skimmer	0	0	0	0	0	0	0	0	0	1	1
Eurasian Collared-Dove	0	0	0	0	0	0	0	0	0	0	0
White-winged Dove	0	0	0	0	0	0	0	0	0	0	0
Mourning Dove	0	0	0	0	0	0	0	0	0	0	0
Short-eared Owl	0	0	0	0	0	0	0	0	0	0	0
Yellow-billed Cuckoo	0	0	0	0	0	0	0	0	0	0	0
Chimney Swift	0	0	0	0	0	0	0	0	0	0	0
Ruby-throated Hummingbird	0	0	0	0	0	0	0	0	0	0	0
Belted Kingfisher	0	0	0	0	0	0	0	0	0	0	0
American Kestrel	0	0	0	0	0	0	0	0	0	0	0
Merlin	0	0	0	0	0	0	0	0	0	0	0
Peregrine Falcon	0	0	0	0	0	0	0	1	0	0	1
Eastern Phoebe	0	0	0	0	0	0	0	0	0	0	0
Eastern Wood-Peevee	0	0	0	0	0	0	0	0	0	0	0
Red-eyed Vireo	0	0	0	0	0	0	0	0	0	0	0
Eastern Kingbird	1	1	0	0	0	0	0	0	0	0	2
Loggerhead Shrike	0	0	0	0	0	0	0	0	0	0	0
American Crow	0	0	0	0	0	0	0	0	0	0	0
Common Nighthawk	0	0	0	0	0	0	0	0	0	0	0
Lesser Nighthawk	0	0	0	0	0	0	0	0	0	0	0
Yellow-bellied Flycatcher	0	0	0	0	0	0	0	0	0	0	0
Purple Martin	0	0	0	0	0	0	0	0	0	0	0
Northern Rough-winged Swallow	0	0	0	0	0	0	0	0	0	0	0
Tree Swallow	0	0	0	0	0	0	0	0	0	0	0
Bank Swallow	0	0	0	0	0	0	0	0	0	0	0
Barn Swallow	0	24	0	3	0	0	0	0	2	3	32
Cliff Swallow	0	0	0	0	0	0	0	0	0	0	0

Swallow sp.	0	0	0	0	0	0	0	6	0	0	6
Sedge Wren	0	0	0	0	0	0	0	0	0	0	0
Marsh Wren	0	0	0	2	0	0	0	0	0	0	2
Northern Mockingbird	0	0	0	0	0	0	0	0	0	0	0
Ruby-crowned Kinglet	0	0	0	0	0	0	0	0	0	0	0
Wood Thrush	0	0	0	0	0	0	0	0	0	0	0
American Pipit	0	0	0	0	0	0	0	0	0	0	0
Gray Catbird	0	0	0	0	0	0	0	0	0	0	0
Northern Waterthrush	0	0	0	0	0	0	0	0	0	0	0
American Redstart	0	0	0	0	0	0	0	0	0	0	0
Orange-crowned Warbler	0	0	0	0	0	0	0	0	0	0	0
Prothonotary Warbler	0	0	0	0	0	0	0	0	0	0	0
Kentucky Warbler	0	0	0	0	0	0	0	0	0	0	0
Tennessee Warbler	0	0	0	0	0	0	0	0	0	0	0
Common Yellowthroat	0	0	0	0	0	0	0	0	0	0	0
Hooded Warbler	0	0	0	0	0	0	0	0	0	0	0
Magnolia Warbler	0	0	0	0	0	0	0	0	0	0	0
Chestnut-sided Warbler	0	0	0	0	0	0	0	0	0	0	0
Black-throated Green Warbler	0	0	0	0	0	0	0	0	0	0	0
Palm Warbler	1	0	0	0	0	0	0	0	0	0	1
Black-and-White Warbler	0	0	0	0	0	0	0	0	0	0	0
Yellow-rumped Warbler	0	0	0	0	0	0	0	0	0	3	3
Yellow-throated Warbler	0	0	0	0	0	0	0	0	0	0	0
Prairie Warbler	0	0	0	0	0	0	0	0	0	0	0
Yellow Warbler	0	0	0	0	0	0	0	0	0	0	0
Pine Warbler	0	0	0	0	0	0	0	0	0	0	0
Warbler sp.	0	0	0	0	0	0	0	0	0	0	0
Savannah Sparrow	0	0	0	1	0	0	0	0	1	0	2
Nelson's Sparrow	0	0	0	0	0	0	0	0	0	0	0
Seaside Sparrow	0	0	0	10	0	0	0	0	0	0	10
Swamp Sparrow	0	0	0	0	0	0	0	0	0	0	0
Song Sparrow	0	0	0	0	0	0	0	0	0	0	0
White-crowned Sparrow	0	0	0	0	0	0	0	0	0	0	0
White-Throated Sparrow	0	0	0	0	0	0	0	0	0	0	0
Ammodramus sp.	0	0	0	0	0	4	0	5	3	0	12
Dickcissel	0	0	0	0	0	0	0	0	0	0	0

Scarlet Tanager		0	0	0	0	0	0	0	0	0	0	0
Indigo Bunting		0	0	0	0	0	0	0	0	0	0	0
Blue Grosbeak		0	1	0	0	0	0	0	0	0	0	1
Red-winged Blackbird		0	7	0	10	0	1	0	13	2	10	43
Orchard Oriole		0	0	0	0	0	0	0	0	2	0	2
Boat-tailed Grackle		0	0	0	0	0	0	0	0	0	0	0
Passerine sp.		0	0	0	0	0	0	0	0	0	0	0