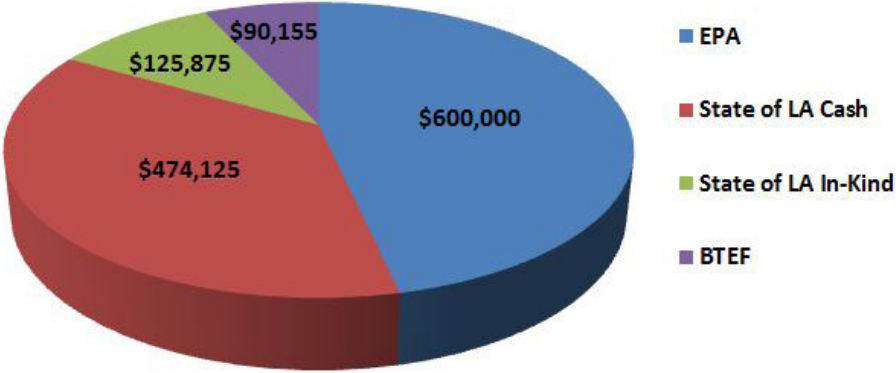


2015 BTNEP FUNDING SOURCES

BTNEP funds its work through several sources including the Environmental Protection Agency (EPA) and the State of Louisiana. Many thanks go out to over 400 different donors who have helped BTNEP through the Barataria Terrebonne Estuary Foundation (BTEF) between January 1, 2015 and October 31, 2015. Donors have helped BTNEP with a variety of activities including research, education, outreach activities, cleanup, volunteer expenses, farm expenses, equipment and supplies.



BTNEP STAFF

Director - Susan Testroet - Bergeron
Deputy Director - Dean Blanchard
Office Coordinator - Nicole Babin
Water Quality Coordinator - Andrew Barron
Habitat Restoration Coordinator - Matt Benoit
Senior Scientist - Richard DeMay

Migratory Bird Coordinator - Delaina LeBlanc
Invasive Species Coordinator - Michael Massimi
Public Involvement Coordinator - Seth Moncrief
Media/Public Relations Coordinator - Kristy Monier
Education/Outreach Coordinator - Alma Robichaux
Bird Conservation Coordinator - Natalie Waters

MANAGEMENT CONFERENCE MEMBERS

- American Sugar Cane League
- Bayou Lafourche Freshwater District
- Coalition to Restore Coastal Louisiana
- Coastal Conservation Association of LA
- Coastal Protection and Restoration Authority
- Commercial Fisheries
- Greater Lafourche Port Commission
- Iberville Parish Government
- Jefferson Parish Government
- LA Department of Agriculture & Forestry
- LA Department of Culture, Recreation & Tourism
- LA Department of Economic Development
- LA Department of Education
- LA Department of Environmental Quality
- LA Department of Health & Hospitals
- LA Department of Natural Resources
- LA Department of Wildlife & Fisheries
- Lafourche Parish Government
- LA Association of Conservation Districts
- LA Association of Levee Boards
- LA Forestry Association
- LA Independent Oil & Gas Association
- LA Landowners Association
- LA Mid-Continent Oil & Gas Association
- LA Oil Spill Coordinators Office
- LA Science Teacher’s Association
- LA Wildlife Federation
- LA State University Ag Center
- National Park Service
- Nicholls State University
- Plaquemines Parish Government
- Pointe Coupee Parish Government
- Sassafras Louisiana
- South Central Planning & Development Commission
- Louisiana Universities Marine Consortium
- South Louisiana Economic Council
- South Louisiana Wetlands Discovery Center
- St. Charles Parish Government
- Terrebonne Parish Government
- The Nature Conservancy
- US Army Corps of Engineers
- US Coast Guard
- US Environmental Protection Agency
- US Fish & Wildlife Service
- US Geological Survey
- US National Marine Fisheries Service
- US Depart.of Ag’s Natural Resource Conservation Service

BARATARIA-TERREBONNE NATIONAL ESTUARY PROGRAM

BTNEP

2015 ANNUAL REPORT



1 OF 28
NATIONAL ESTUARY
PROGRAMS IN U.S.

16
PARISHES REPRESENTED
IN ESTUARINE SYSTEM

175
TEACHERS EDUCATED
BY BTNEP

310
VOLUNTEERS FOR
PLANTINGS

1,613
VOLUNTEER HOURS
FOR PLANTINGS

20,913
PLANTS PLANTED

Dear Friends of the Estuary,

Thank you all for your continued support to help the Barataria-Terrebonne National Estuary Program (BTNEP) and its Foundation grow. The mission of the protection and restoration of the land and water in our bayou communities is unwavering. The reason we continue to work to save these valuable resources is for the people who live, work, fish, hunt, boat, vacation, and play here. We began twenty-five years ago with a vision, a written plan, and the commitment of hundreds of individuals who have made lasting improvements to our ecosystem.

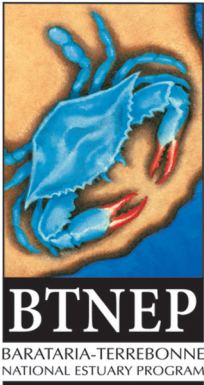
Our BTNEP Comprehensive Conservation and Management Plan (CCMP) goals have always been measurable and required the pledge of not only our staff, but all of the members of our BTNEP Management Conference. Our approach to coastal issues has always been based on consensus and common ground solutions so that impartial resolutions can be made for all stakeholders of the estuary.

Our team of dedicated employees actively participates in a host of actions related to improving the wetlands habitats here in coastal Louisiana. You may have seen our staff at coastal restoration meetings, out testing water quality, identifying and monitoring threatened or endangered species, conducting birding surveys on our barrier islands and shorelines, doing their best to help people understand the harmful effects of invasive species, working at the Nicholls State University farm to grow out hearty species of local plants, working with volunteers, paddling down Bayou Lafourche, working with home owners to improve waste water solutions, or educating people of all ages about the value of our coast.

BTNEP is an organization of dynamic action! We invite you to continue to stay active in participating with us through the consensus and balanced approach we seek to implement. As Margaret Mead said, “A small group of thoughtful people could change the world. Indeed, it’s the only thing that ever has.”

Because of you and your sustained support, our future looks bright. Our continued passion and hard work make the Barataria-Terrebonne National Estuary System and its people a celebrated treasure.

Kindest regards,
Susan Testroet-Bergeron
Susan Testroet-Bergeron
BTNEP Director



WHAT IS AN ESTUARY?

An estuary is a coastal area where saltwater from the ocean mixes with freshwater from rivers, rainfall, and upland runoff. Within an estuary, saltwater and freshwater proportions differ daily depending on the season, weather, and tides. Vital coastal ecosystems exist in these constantly changing conditions. Examples of these dynamic habitats include: swamps, marshes, beaches, oyster reefs, mangrove forests, river deltas, and sea grasses. Estuarine environments are among the most biologically productive on Earth.

WHAT IS BTNEP?

The mission of the Barataria-Terrebonne National Estuary Program (BTNEP) is the preservation and restoration of the estuarine system. BTNEP strives to rebuild and protect the estuary for future generations through the implementation of a science-based, consensus-driven comprehensive conservation management plan that utilizes partnerships focused on the estuary’s cultural, economic, and natural resources. BTNEP is funded through the Environmental Protection Agency’s 320 Clean Water Act, the State of Louisiana, and the Barataria-Terrebonne Estuary Foundation, a 501(c)3.

WHAT DOES BTNEP DO?

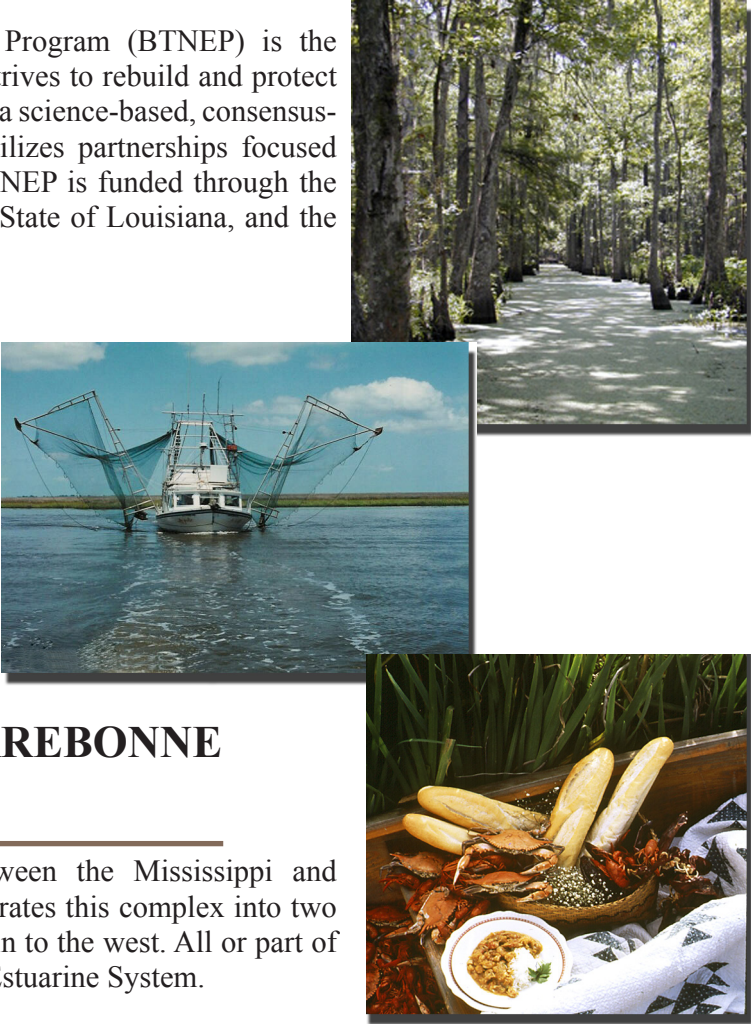
- Scientific Research
- Habitat Enhancement
- Water Quality Projects
- Land Restoration
- Species Assessments
- K-12, Public Education, and Outreach
- Volunteer Activities

WHERE IS THE BARATARIA-TERREBONNE NATIONAL ESTUARY?

The Barataria-Terrebonne National Estuary is located between the Mississippi and Atchafalaya Rivers in South Louisiana. Bayou Lafourche separates this complex into two basins, the Barataria Basin to the east, and the Terrebonne Basin to the west. All or part of 16 Louisiana parishes are located in the Barataria-Terrebonne Estuarine System.

WHAT ARE THE ISSUES AFFECTING THE ESTUARY?

- Hydrologic Modification
 - Habitat Loss
 - Pathogens
 - Eutrophication
- Changes in Living Resources
 - Toxic Substances
 - Reduction in Sediment Availability



For more information visit our website at www.BTNEP.org or follow us on Facebook and Twitter.

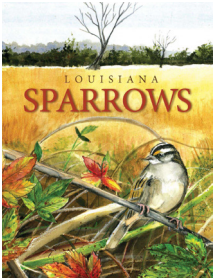
HIGHLIGHTED PROJECTS & COORDINATORS



Native Plant Materials Program & Volunteer Program - Matt Benoit & Seth Moncrief
BTNEP has a huge campaign underway to restore native habitats along Louisiana’s coast. In 2008, the BTNEP Native Plant Materials Program (NPMP) was developed to supply native woody species for the “Maritime Forest Ridge and Marsh Restoration Project at Port Fourchon, Louisiana.” The program was further expanded to meet the need for woody species in coastal restoration projects throughout the entire BTNEP area. The goal of the BTNEP NPMP is to re-create natural habitats on coastal restoration projects. Each year, thousands of woody species and tens of thousands of herbaceous species are planted within the estuary by hundreds of BTNEP volunteers who come from all over the country.

Louisiana Sparrows Publication -Richard DeMay

The focus of all BTNEP bird publications is to inform the public about the importance of coastal Louisiana’s habitats to the many species of birds that utilize them and to promote Louisiana as a birding destination. The “Louisiana Sparrows” publication is a colorful, 64-page publication that presents life history information on 33 sparrow species which have been identified in Louisiana. The publication, written by Bill Fontenot and BTNEP Senior Scientist, Richard DeMay, also serves as a guide for identifying sparrows in the field.



Bird Monitoring & Education at Woodlands Conservancy - Delaina LeBlanc

The goal of this project was to develop a bird monitoring station to assess how restoration activities influence bird communities. Bird banding stations were set up at the Woodlands Trail and Delacroix Preserve. Stations are operated on a monthly basis and provide opportunities for volunteers by offering training, supervision and feedback. Data is collected on each bird captured to assess age and health of individuals and then uploaded to a state database. Visitors at the Woodlands Conservancy properties are engaged and encouraged to become citizen scientists to help monitor this dynamic habitat.

South Louisiana Wetlands Discovery Center Youth Summit - Alma Robichaux

The summit is designed to bring young leaders together to discuss the various challenges and potential solutions for Gulf Coast communities. High school students from around the region attend a two-day event. Students are tasked with developing action plans addressing local concerns that can be implemented in their communities. Over the next year, they work on the action plans with the guidance of the scientific community. The interactive education program provides students with life-like experiences in coastal restoration.

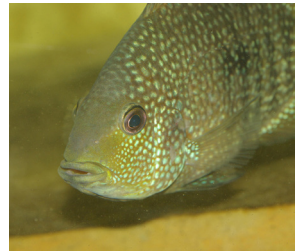


BTNEP Bird Blog- Natalie Waters

The Bird Blog provides readers with a fun and informative website which aims to engage, promote and educate the public about the bird-related projects and events occurring throughout Louisiana. The blog enables the estuary program to connect with a broad audience and inform readers about the importance of preserving Louisiana’s diverse habitats for the many species of birds that utilize them.

From H-2-O Teacher Training Workshop - Andrew Barron

“From H-2-O” is a content-driven, teacher training workshop held each year at LUMCON in Cocodrie, LA. The workshop is a partnership between BTNEP and LUMCON to further the understanding of the estuary’s complex and vital water resources. This comprehensive, four-day workshop provides teachers with everything they need to implement the Bayouside Classroom Program. Bayouside Classroom is LUMCON’s on-going student-based water monitoring network throughout Louisiana. This program uses water sampling to teach students about water quality from a scientist’s perspective.



Survey & Tracking of Rio Grande Cichlids - Michael Massimi

The Rio Grande Cichlid is an invasive fish from northern Mexico that was introduced to the New Orleans area in the 1990s, most likely as a result of aquarium dumps. It has been spreading rapidly, displacing native fish, and expanding into ranges once thought to be too salty and too cold for survival. The survey and tracking project examined several aspects of invasion in the Barataria and Terrebonne basins in order to inform and refine the future direction of response and management activities for this species.

Visit with our staff or check out our website for more information on any of the projects mentioned above or additional BTNEP projects.