

Our Estuary...My Future: Protecting the Colors of the Estuary!



***2018 Estuary Artworks Calendar
Featuring student artwork from the winners of the
BTNEP Estuary Artworks contest.***

*Artist: Sydney Z.
10th grade*

Barataria-Terrebonne National Estuary Program

BTNEP

WHAT IS AN ESTUARY & WHY IS IT IMPORTANT?

An estuary is a coastal area where salt water from the ocean mixes with fresh water from rivers, rainfall, and upland runoff. Within an estuary, salt water and fresh water proportions differ daily depending on the season, weather, and tides. Vital coastal ecosystems exist in these constantly changing conditions.

Louisiana's Barataria-Terrebonne Estuary System (BTES) is located between the Mississippi and Atchafalaya Rivers in south Louisiana. Bayou Lafourche separates this complex into two basins, the Barataria Basin to the east, and the Terrebonne Basin to the west. Examples of the dynamic habitats that are included in the BTES are: swamps, marshes, beaches, oyster reefs, mangrove forests, river deltas, and sea grasses. Estuarine environments such as the BTES are among the most biologically productive on Earth. The BTES consists of all or part of 16 Louisiana parishes.

Like other natural resources, the BTES can be viewed as an asset or capital goods that provide a stream of services to humankind. The Barataria-Terrebonne National Estuary Program (BTNEP) strives to use consensus-driven science-based plans to protect the land, water, and people that generate the valuable economics of things as diverse as commercial fisheries, oil and gas production, agriculture, shipbuilding, and recreational hunting and fishing.

WHAT IS BTNEP?

The mission of the Barataria-Terrebonne National Estuary Program (BTNEP) is the preservation and restoration of the estuarine system. BTNEP strives to rebuild and protect the estuary for future generations through the implementation of a science-based, consensus-driven comprehensive conservation and management plan that utilizes partnerships focused on the estuary's cultural, economic and natural resources. BTNEP is funded through the Environmental Protection Agency's 320 Clean Water Act, the State of Louisiana, and the Barataria-Terrebonne Estuary Foundation a 501(c)3.



Photo by: Lane Lefort

WHAT DOES BTNEP DO?

- Scientific Research
- Habitat Enhancement
- Water Quality Projects
- Land Restoration
- Species Assessments
- K-12, Public Education, and Outreach
- Volunteer Activities

WHAT ARE THE ESTUARY ISSUES?

- Hydrologic Modification
- Habitat Loss
- Pathogens
- Eutrophication
- Change in Living Resources
- Toxic Substances
- Reduction in Sediment Availability



Photos by: Lane Lefort

BTNEP's **Estuary Artworks** Celebrating National Estuaries Week

National Estuaries Week is held every September to promote the importance of estuaries and the need to protect and restore them by raising awareness of the vital role estuaries play in our society. Activities across the country sponsored by various groups are creating awareness and public interest about the significance of estuaries in the environment. BTNEP's goal with the *Estuary Artworks* event is to educate children about the Barataria-Terrebonne Estuarine System, its importance and value to the community. As the estuary disappears, so does the culture and heritage of its people.

THANKS TO OUR PARTNERS



BARATARIA-
TERREBONNE
ESTUARY
FOUNDATION



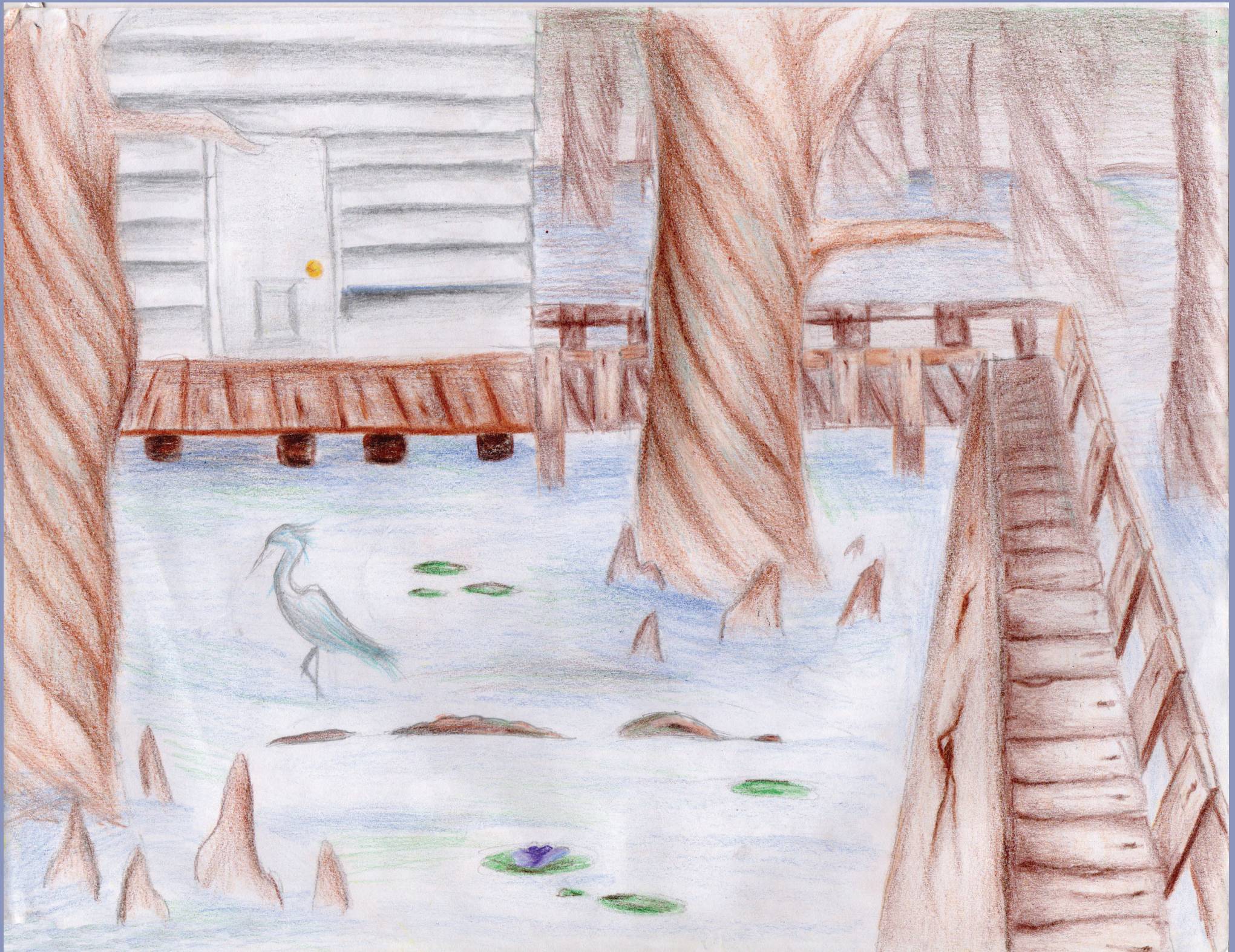
Audubon Nature Institute
Celebrating the Wonders of Nature



Schools in the Estuary

For more information visit our website at www.BTNEP.org
or follow us on Facebook and Twitter.

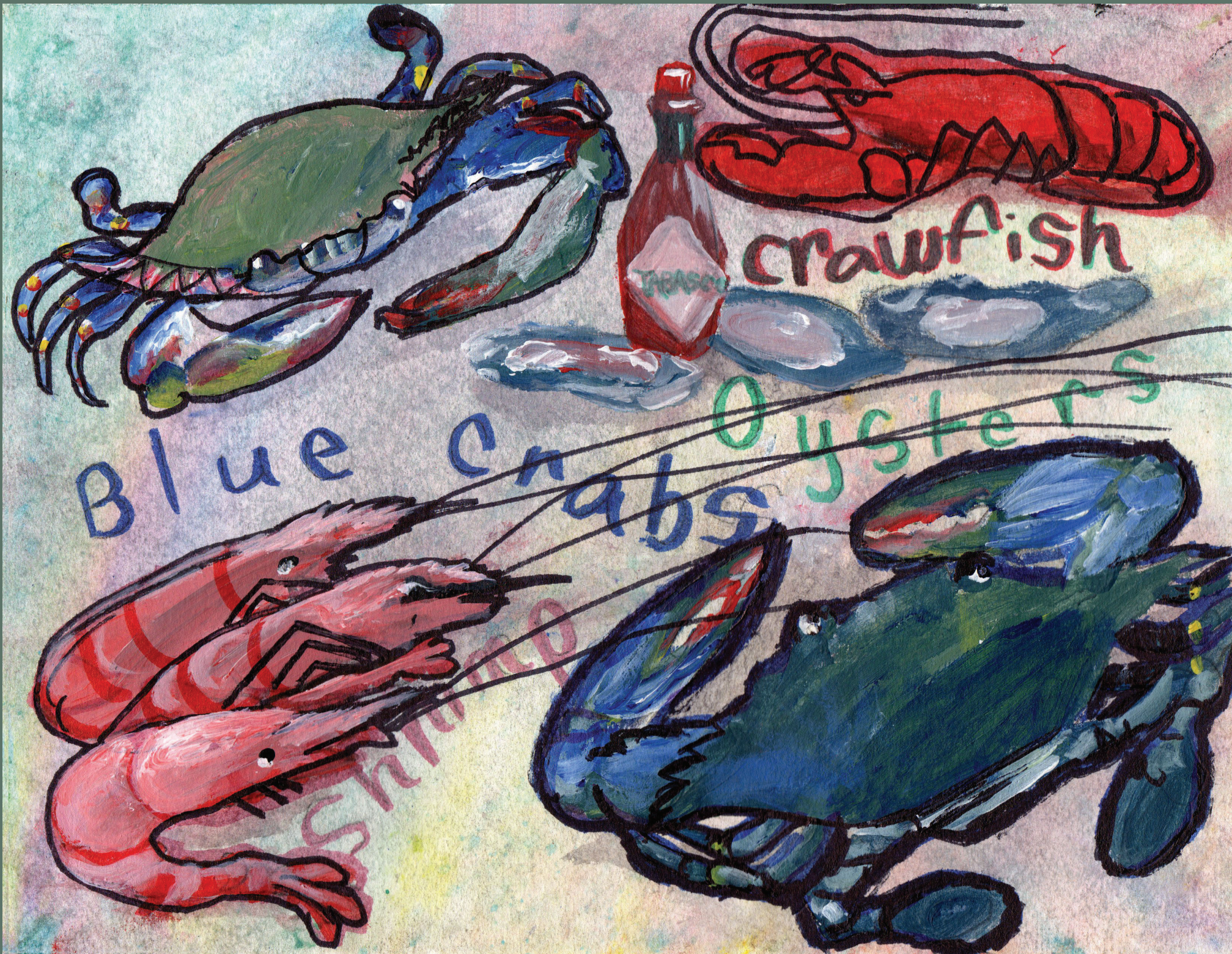




JANUARY 2018

Artist: Lexi S., 8th Grade

| Sunday | Monday | Tuesday | Wednesday | Thursday | Friday | Saturday |
|--------|--------------------------------------|---------|-----------|----------|--------|----------|
| | 1 New Year's Day | 2 | 3 | 4 | 5 | 6 |
| 7 | 8 | 9 | 10 | 11 | 12 | 13 |
| 14 | 15 Martin Luther King, Jr. Day | 16 | 17 | 18 | 19 | 20 |
| 21 | 22 | 23 | 24 | 25 | 26 | 27 |
| 28 | 29 | 30 | 31 | | | |



FEBRUARY 2018

*Artist: Matthew P., 2nd Grade
K-2nd Grade Division Winner*

| Sunday | Monday | Tuesday | Wednesday | Thursday | Friday | Saturday |
|--------|--------------------------|---------|--|----------|---|--|
| | | | | 1 | 2 Groundhog Day Grand Isle Arbor Day Tree Giveaway | 3 Grand Isle Arbor Day Tree Giveaway |
| 4 | 5 | 6 | 7 | 8 | 9 | 10 |
| 11 | 12 Lincoln's Birthday | 13 | 14 St. Valentine's Day Ash Wednesday | 15 | 16 | 17 |
| 18 | 19 President's Day | 20 | 21 | 22 | 23 | 24 |
| 25 | 26 | 27 | 28 | | | |

Gumbo
IS WHERE

The Home Is

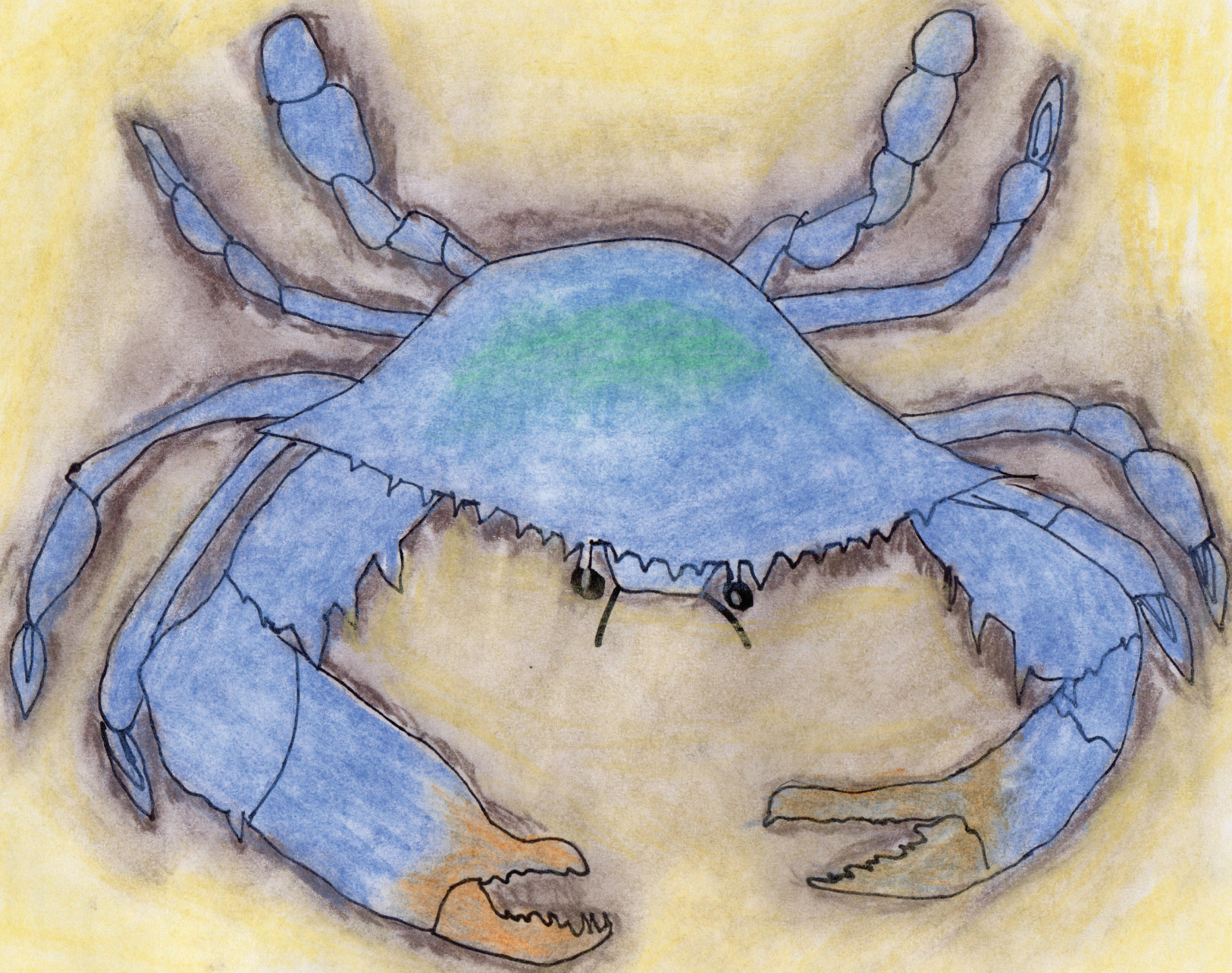
Cajun
Spirit! *



MARCH 2018

Artist: Katie H., 2nd Grade

| Sunday | Monday | Tuesday | Wednesday | Thursday | Friday | Saturday |
|----------------------------------|--------|---------------------|-----------|----------|--------|----------------------------------|
| | | | | 1 | 2 | 3 |
| 4 | 5 | 6 | 7 | 8 | 9 | 10 Bayou Lafourche Cleanup |
| 11 Daylight Savings Begins | 12 | 13 | 14 | 15 | 16 | 17 St. Patrick's Day |
| 18 | 19 | 20 Spring Begins | 21 | 22 | 23 | 24 |
| 25 | 26 | 27 | 28 | 29 | 30 | 31 |



APRIL 2018

Artist: Clynest L., 5th Grade

| Sunday | Monday | Tuesday | Wednesday | Thursday | Friday | Saturday |
|---|--------|---------|-----------|--|--|--|
| 1 <small>April Fool's Day Easter Sunday</small> | 2 | 3 | 4 | 5 <small>Paddle Bayou Lafourche</small> | 6 <small>Paddle Bayou Lafourche</small> | 7 <small>Paddle Bayou Lafourche</small> |
| 8 <small>Paddle Bayou Lafourche</small> | 9 | 10 | 11 | 12 | 13 | 14 |
| 15 | 16 | 17 | 18 | 19 | 20 <small>Grand Isle Migratory Bird Celebration</small> | 21 <small>Grand Isle Migratory Bird Celebration</small> |
| 22 <small>Earth Day Grand Isle Migratory Bird Celebration</small> | 23 | 24 | 25 | 26 | 27 | 28 |
| 29 | 30 | | | | | |



MAY 2018

Artist: Natalie A., 12th Grade

| Sunday | Monday | Tuesday | Wednesday | Thursday | Friday | Saturday |
|--------------------|--------------------|---------|-----------|----------|--------|----------|
| | | 1 | 2 | 3 | 4 | 5 |
| 6 | 7 | 8 | 9 | 10 | 11 | 12 |
| 13 Mother's Day | 14 | 15 | 16 | 17 | 18 | 19 |
| 20 | 21 | 22 | 23 | 24 | 25 | 26 |
| 27 | 28 Memorial Day | 29 | 30 | 31 | | |



JUNE 2018

Artist: Ella L. 4th Grade

| Sunday | Monday | Tuesday | Wednesday | Thursday | Friday | Saturday |
|--------------------|--------|---------|-----------|---------------------|--------|----------|
| | | | | | 1 | 2 |
| 3 | 4 | 5 | 6 | 7 | 8 | 9 |
| 10 | 11 | 12 | 13 | 14 Flag Day | 15 | 16 |
| 17 Father's Day | 18 | 19 | 20 | 21 Summer Begins | 22 | 23 |
| 24 | 25 | 26 | 27 | 28 | 29 | 30 |



JULY 2018

Artist: Anna Belle D., 6th Grade

| Sunday | Monday | Tuesday | Wednesday | Thursday | Friday | Saturday |
|--------|--------|---------|-----------------------|----------|--------|----------|
| 1 | 2 | 3 | 4 Independence Day | 5 | 6 | 7 |
| 8 | 9 | 10 | 11 | 12 | 13 | 14 |
| 15 | 16 | 17 | 18 | 19 | 20 | 21 |
| 22 | 23 | 24 | 25 | 26 | 27 | 28 |
| 29 | 30 | 31 | | | | |



AUGUST 2018

Artist: Alexis B., 12th Grade

| Sunday | Monday | Tuesday | Wednesday | Thursday | Friday | Saturday |
|--------|--------|---------|-----------|----------|--------|----------|
| | | | 1 | 2 | 3 | 4 |
| 5 | 6 | 7 | 8 | 9 | 10 | 11 |
| 12 | 13 | 14 | 15 | 16 | 17 | 18 |
| 19 | 20 | 21 | 22 | 23 | 24 | 25 |
| 26 | 27 | 28 | 29 | 30 | 31 | |



SEPTEMBER 2018

*Artist: Cierra S., 3rd Grade
3rd-5th Grade Division Winner*

| Sunday | Monday | Tuesday | Wednesday | Thursday | Friday | Saturday |
|----------|----------------|---------|-----------|----------|--------|--|
| | | | | | | 1 |
| 2 | 3 Labor Day | 4 | 5 | 6 | 7 | 8 |
| 9 | 10 | 11 | 12 | 13 | 14 | 15 |
| 16 | 17 | 18 | 19 | 20 | 21 | 22 Autumn Begins Start of National Estuaries Week |
| 23 30 | 24 | 25 | 26 | 27 | 28 | 29 National Estuaries Day |

www.BTNEP.org





OCTOBER 2018

Artist: Lexi N., 1st Grade

| Sunday | Monday | Tuesday | Wednesday | Thursday | Friday | Saturday |
|--------|-------------------|---------|-----------------|----------|--------|----------|
| | 1 | 2 | 3 | 4 | 5 | 6 |
| 7 | 8 Columbus Day | 9 | 10 | 11 | 12 | 13 |
| 14 | 15 | 16 | 17 | 18 | 19 | 20 |
| 21 | 22 | 23 | 24 | 25 | 26 | 27 |
| 28 | 29 | 30 | 31 Halloween | | | |



NOVEMBER 2018

*Artist: Alexis N., 11th Grade
9th-12th Grade Division Winner*

| Sunday | Monday | Tuesday | Wednesday | Thursday | Friday | Saturday |
|---|--------|---------|-----------|-----------------------------------|--------|----------|
| | | | | 1 | 2 | 3 |
| 4 <small>Daylight Savings Ends</small> | 5 | 6 | 7 | 8 | 9 | 10 |
| 11 <small>Veterans Day</small> | 12 | 13 | 14 | 15 | 16 | 17 |
| 18 | 19 | 20 | 21 | 22 <small>Thanksgiving</small> | 23 | 24 |
| 25 | 26 | 27 | 28 | 29 | 30 | |

www.BTNEP.org





DECEMBER 2018

*Artist: Caroline D., 6th Grade
6th-8th Grade Division Winner*

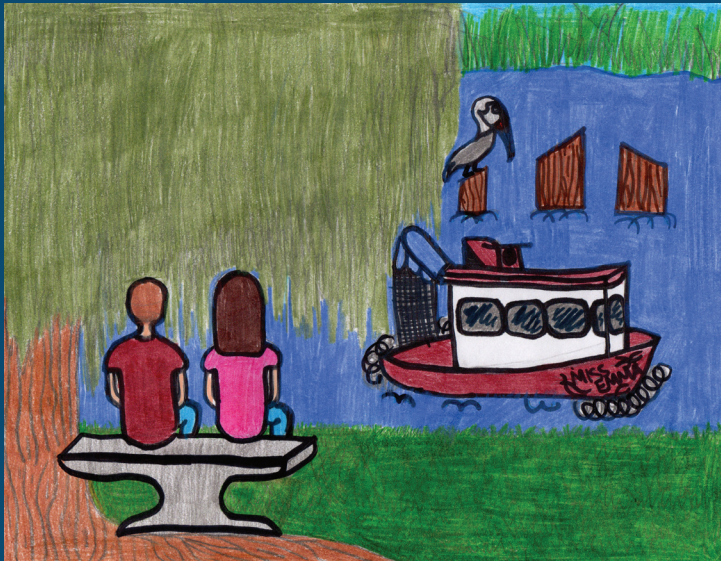
| Sunday | Monday | Tuesday | Wednesday | Thursday | Friday | Saturday |
|----------|----------------------------|---------------------|-----------|----------|---------------------|----------|
| | | | | | | 1 |
| 2 | 3 | 4 | 5 | 6 | 7 | 8 |
| 9 | 10 | 11 | 12 | 13 | 14 | 15 |
| 16 | 17 | 18 | 19 | 20 | 21 Winter Begins | 22 |
| 23 30 | 24 New Year's Eve 31 | 25 Christmas Day | 26 | 27 | 28 | 29 |

www.BTNEP.org

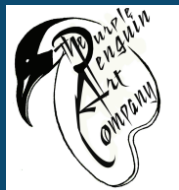




*Artist: Amalee C.,
Kindergarten*



*Artist: Emma D.,
6th Grade*



*BTNEP would like to thank
all participating students
from the following schools.*

Bayou Community Academy
Caldwell Middle School
Catholic of Pointe Coupee
Chackbay Elementary School
Chamberlain Elementary School
Cohn Elementary School
E. Learning Academy
E.D. White High School
Golden Meadow Middle School
Golden Meadow Upper Elementary School
Gramercy Elementary Magnet School
Grand Isle School
Holy Savior Catholic School
Lakewood Elementary School
Leo Kerner Jr. Elementary School
Lisa Park Elementary School
Max Charter School
Mulberry Elementary School
North Larose Elementary School
R.J. Vial Elementary School
Rougon Elementary School
South Lafourche High School
South Plaquemines Elementary School
St. Genevieve Catholic School
St. Gregory Catholic School
St. Joseph Catholic Elementary School
St. Mary's Nativity School
Thomas Jefferson High School
Vacherie Elementary School
Virtual Academy of Lafourche



*Artist: Harley B.,
5th Grade*



*Artist: Victoria T.,
11th Grade*

