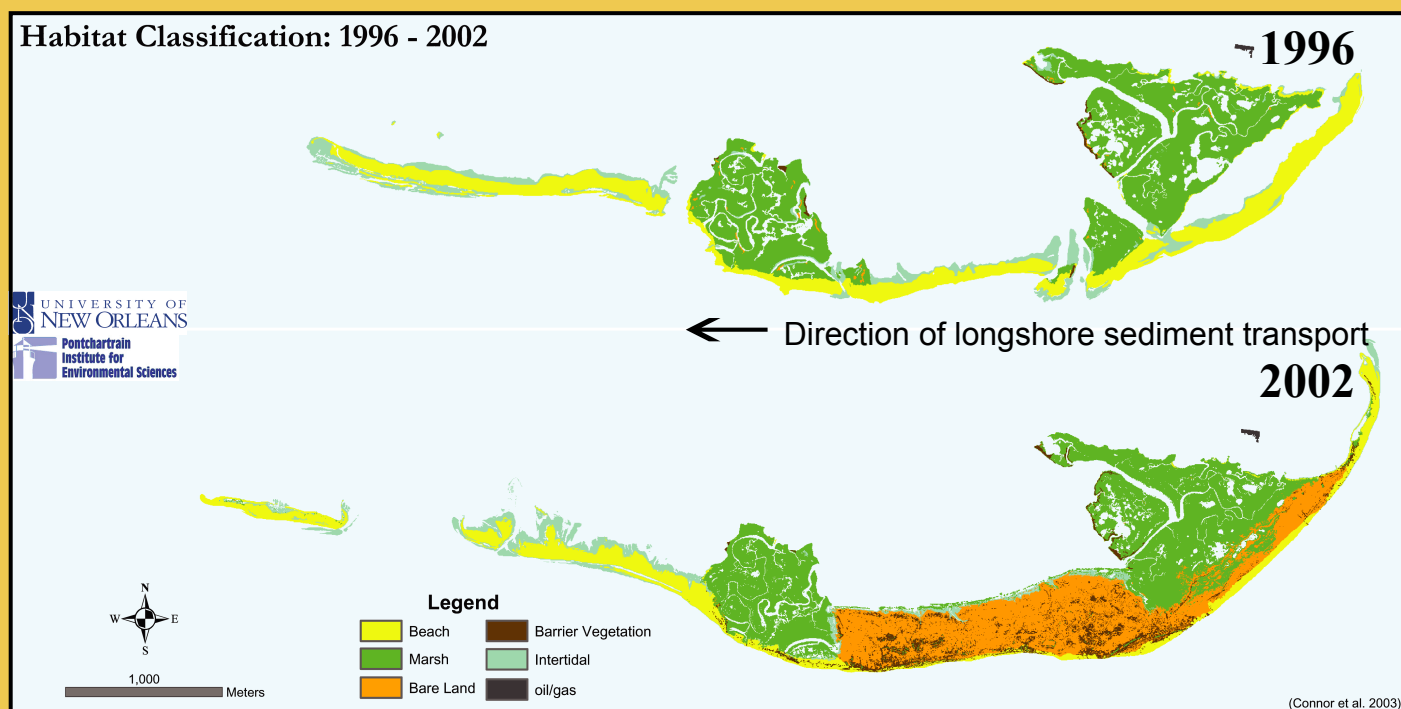


ISLES DERNIERES

Whiskey Island

Restoration on Whiskey Island

The Coastal Planning, Protection and Restoration Act (CWPPRA) funds projects which have successfully rebuilt coastal habitats on barrier islands. These images of Whiskey Island show where sediment was placed on the island to increase its height and width. This increases the endurance of the islands during major storm events. In addition to adding sediment, sand fences were built and vegetation planted to help hold the sediment in place.



Island Changes from Hurricanes Katrina and Rita

This map of Whiskey Island highlights land change due to hurricane effects. Areas in red indicate parts of Whiskey Island where sediment has been lost. Sediment was redistributed due to increased wave activity. Light green areas locate where sediment was deposited, resulting in land gain. Dark green areas indicate areas of the island that have remained constant, despite the storms' force, although habitat was altered by the storm surge.

