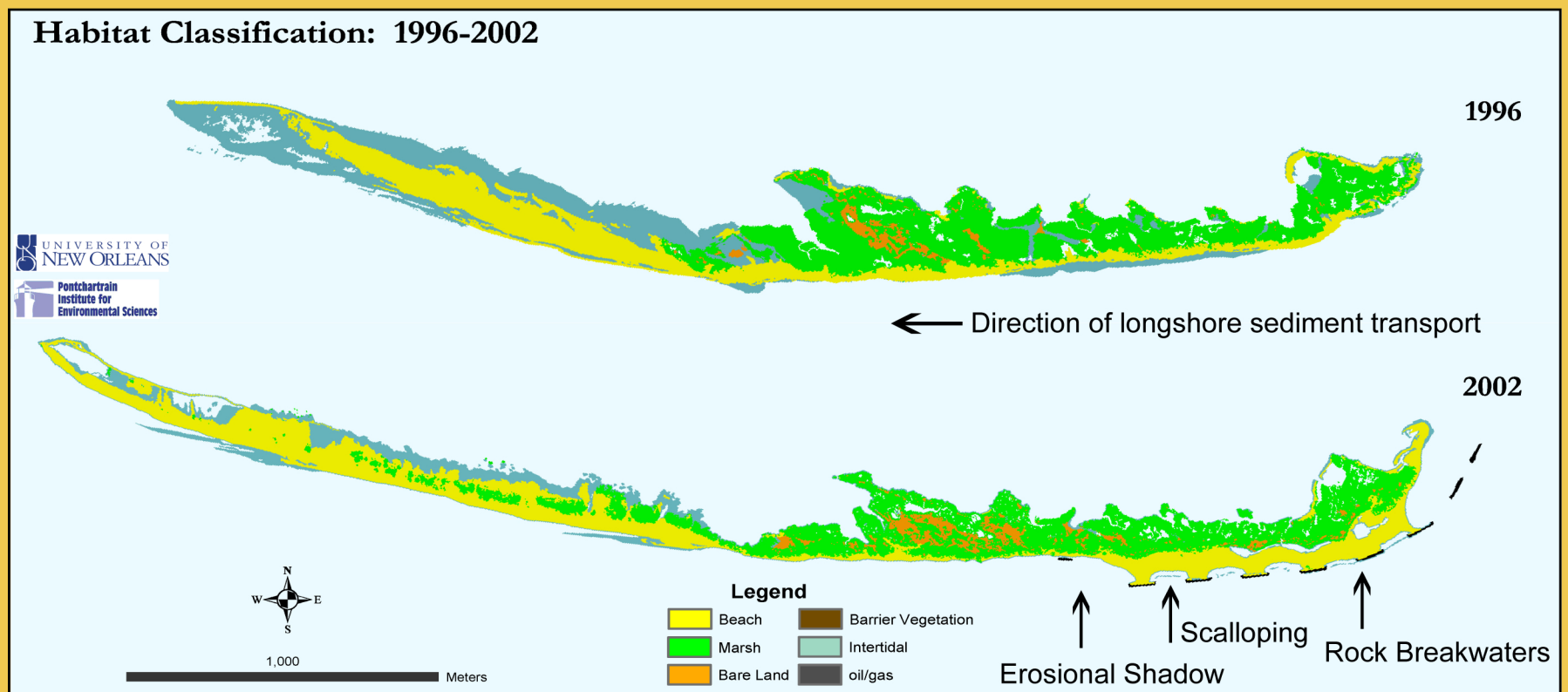


ISLE DERNIERES

Raccoon Island

Restoration on Raccoon Island

The Coastal Wetlands Planning, Protection and Restoration Act (CWPPRA) funds projects which have successfully rebuilt coastal habitats on barrier islands. These images of Raccoon Island show where sediment was placed on the island to increase its height and/or width. This increases the endurance of the island during major storm events. In addition to adding sediment, rock breakwaters and sand fences were built and vegetation planted to help hold the sediment in place. As illustrated in the map below, rock breakwaters often create unnatural scalloping of the shoreline and erosional shadows caused by the interruption of wave action and longshore sediment drift.



Island Changes Due to Hurricanes Katrina and Rita

This map of Raccoon Island highlights land change due to hurricane effects. Areas in red indicate parts of the island where land has been lost. Sediment was redistributed by increased wave activity. Light green areas locate where sediment was redeposited. The darker green areas indicate parts of the island that remained constant despite the storms' force, although habitat was altered by the storm surge.

