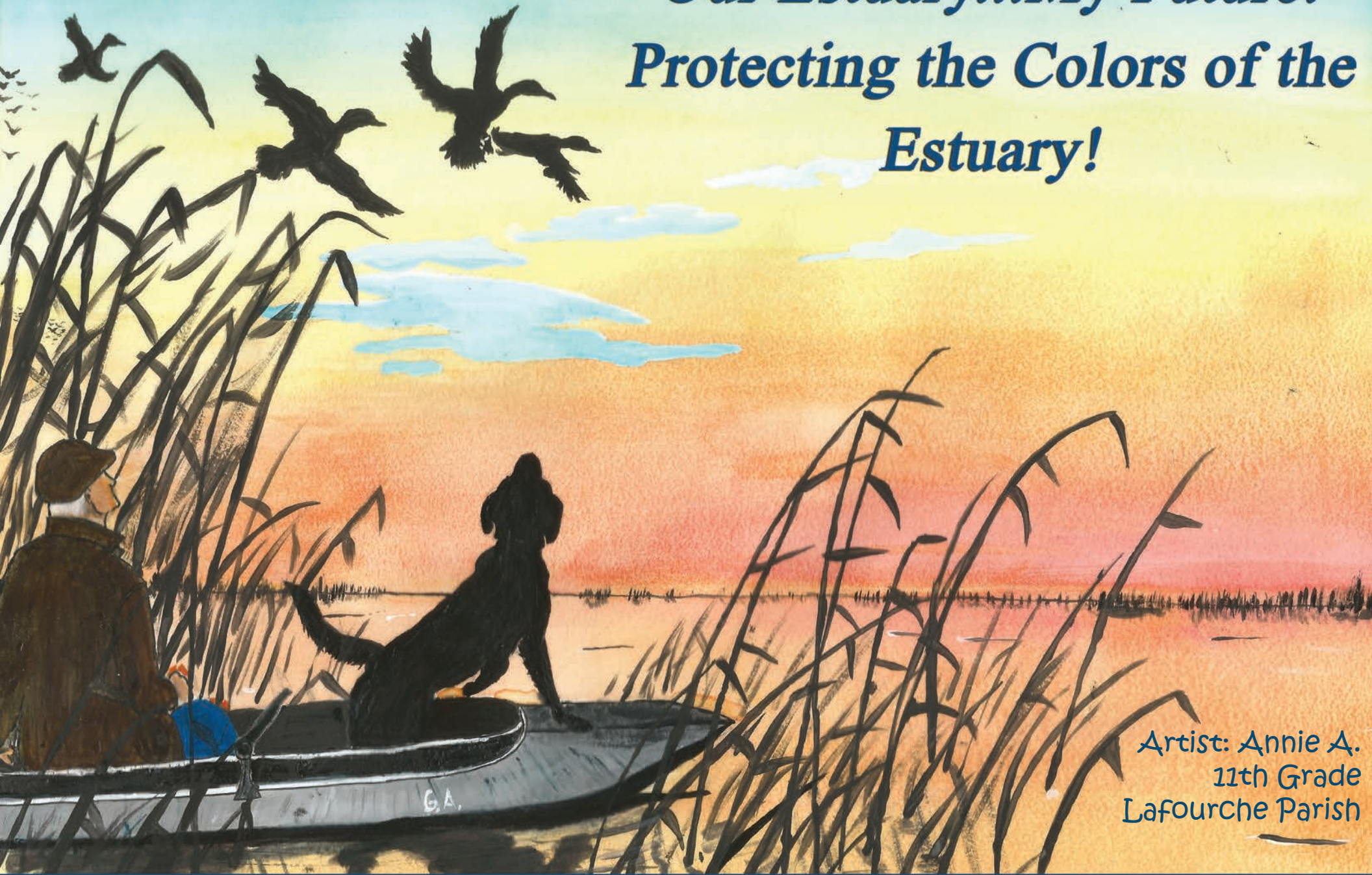


# ***Our Estuary...My Future: Protecting the Colors of the Estuary!***



Artist: Annie A.  
11th Grade  
Lafourche Parish

2017 Estuary Artworks Calendar  
Featuring artwork from the winners of the BTNEP's 2016 Estuary Artworks contest.





# Barataria-Terrebonne National Estuary Program

## BTNEP

### WHAT IS AN ESTUARY?

An estuary is a coastal area where salt water from the ocean mixes with fresh water from rivers, rainfall, and upland runoff. Within an estuary, salt water and fresh water proportions differ daily depending on the season, weather, and tides. Vital coastal ecosystems exist in these constantly changing conditions. Examples of these dynamic habitats include: swamps, marshes, beaches, oyster reefs, mangrove forests, river deltas, and sea grasses. Estuarine environments are among the most biologically productive on Earth.

### WHAT IS BTNEP?

The mission of the Barataria-Terrebonne National Estuary Program (BTNEP) is the preservation and restoration of the estuarine system. BTNEP strives to rebuild and protect the estuary for future generations through the implementation of a science-based, consensus-driven comprehensive conservation management plan that utilizes partnerships focused on the estuary's cultural, economic and natural resources. BTNEP is funded through the Environmental Protection Agency's 320 Clean Water Act, the State of Louisiana, and the Barataria-Terrebonne Estuary Foundation a 501(c)3.

### WHERE IS THE BARATARIA-TERREBONNE NATIONAL?

The Barataria-Terrebonne National Estuary is located between the Mississippi and Atchafalaya Rivers in south Louisiana. Bayou Lafourche separates this complex into two basins, the Barataria Basin to the east, and the Terrebonne Basin to the west. All or part of 16 Louisiana parishes are located in the Barataria-Terrebonne Estuarine System.





## WHAT DOES BTNEP DO?

- Scientific Research
- Habitat Enhancement
- Water Quality Projects
- Land Restoration
- Species Assessments
- K-12, Public Education, and Outreach
- Volunteer Activities

## WHAT ARE THE ESTUARY ISSUES?

- Hydrologic Modification
- Habitat Loss
- Pathogens
- Eutrophication
- Change in Living Resources
- Toxic Substances
- Reduction in Sediment Availability



### BTNEP's **Estuary Artworks** Celebrating National Estuaries Week

National Estuaries Week is held to promote the importance of estuaries and the need to protect and restore them by raising awareness of the vital role estuaries play in our society. Activities across the country sponsored by various groups are creating awareness and public interest about the significance of estuaries in the environment. BTNEP's goal with the Estuary Artworks event is to educate children more about the Barataria-Terrebonne Estuarine System, its importance and value to the community. As the estuary disappears, so does the culture and heritage of its people.

## THANKS TO OUR PARTNERS



BARATARIA-  
TERREBONNE  
ESTUARY  
FOUNDATION



Audubon Nature Institute  
*Celebrating the Wonders of Nature*



**bayou  
country  
children's  
museum**

For more information visit our website at [www.BTNEP.org](http://www.BTNEP.org)  
or follow us on Facebook and Twitter.



# Our Estuary...



Together,  
Hand in Hand...  
We will keep  
you safe forever.



# JANUARY 2017

Artist: Brian B., 3rd-5th Grade Division Winner  
5th Grade, Terrebonne Parish

Sunday	Monday	Tuesday	Wednesday	Thursday	Friday	Saturday
1 New Year's Day	2	3	4	5	6	7
8	9	10	11	12	13	14
15 M L King Day	16	17	18	19	20	21
22	23	24	25	26	27	28
29	30	31				

*Our Estuary: the wetlands that contain freshwater from bayous  
and rivers that mix with saltwater from the Gulf of Mexico.*





# February 2017

Artist: Leah A.  
12th Grade, Lafourche Parish

Sunday	Monday	Tuesday	Wednesday	Thursday	Friday	Saturday
			1	2	3	4
5	6	7	8	9	10	11
12	13	14 Valentine's Day	15	16	17	18
19	20 Presidents' Day	21	22	23	24	25
26	27	28				

*Swamp: wetlands in the estuary that are covered by trees such as cypress or tupelo*









# March 2017

Artist: Katie H.  
1st Grade, Lafourche Parish

Sunday	Monday	Tuesday	Wednesday	Thursday	Friday	Saturday
			1	2	3	4
5	6	7	8	9	10	11 BTNEP Bayou Lafourche Cleanup
12	13	14	15	16	17	18
19	20	21	22	23 BTNEP Paddle Bayou Lafourche	24 BTNEP Paddle Bayou Lafourche	25 BTNEP Paddle Bayou Lafourche
26 BTNEP Paddle Bayou Lafourche	27	28	29	30	31	

*Louisiana's estuaries provides perfect nursery grounds and homes  
for a variety of fish species.*










# April 2017

Artist: Tyler B.  
11th Grade, Jefferson Parish

Sunday	Monday	Tuesday	Wednesday	Thursday	Friday	Saturday
						1
2	3	4	5	6	7	8
9	10	11	12	13	14 Good Friday	15
16 Easter Sunday	17	18	19	20	21 Grand Isle Migratory Bird Celebration	22 Grand Isle Migratory Bird Celebration
23 Grand Isle Migratory Bird Celebration	24	25	26	27	28	29
30	<div><p><i>The Louisiana Black Bear is our state mammal. It is one of 16 subspecies of the American Black Bear.</i></p></div>					





# May 2017

Artist: Lexi S., 6th-8th Grade Division Winner  
7th Grade, Lafourche Parish

Sunday	Monday	Tuesday	Wednesday	Thursday	Friday	Saturday
	1	2	3	4	5	6
7	8	9	10	11	12	13
14 Mother's Day	15	16	17	18	19	20
21	22	23	24	25	26	27
28 Memorial Day	29	30	31			

*Using small skiffs or large trawl boats, shrimp trawling is a traditional fishing technique in Louisiana estuaries.*





Our Estuary... My Future:  
Protecting the Colors of the  
Estuary!!!



# June 2017

Artist: Braden L.  
5th Grade, Terrebonne Parish

Sunday	Monday	Tuesday	Wednesday	Thursday	Friday	Saturday
				1	2	3
4	5	6	7	8	9	10
11	12	13	14	15	16	17
18 Father's Day	19	20	21	22	23	24
25	26	27	28	29	30	

*Music often provides the backdrop for Louisiana events designed to increase awareness about our unique culture.*










# July 2017

Artist: Ellie H.  
2nd Grade, Lafourche Parish

Sunday	Monday	Tuesday	Wednesday	Thursday	Friday	Saturday
						1
2	3	4 Independence Day	5	6	7	8
9	10	11	12	13	14	15
16	17	18	19	20	21	22
23	24	25	26	27	28	29
30	31	<p><i>The Great Egret has a yellow bill and black legs. It has a slow flight pattern with its neck retracted.</i></p> 				







# August 2017

Artist: Hoang V.  
8th Grade, Jefferson Parish

Sunday	Monday	Tuesday	Wednesday	Thursday	Friday	Saturday
		1	2	3	4	5
6	7	8	9	10	11	12
13	14	15	16	17	18	19
20	21	22	23	24	25	26
27	28	29	30	31		

*Fishing isn't just a fun hobby; it teaches valuable skills and science concepts. Benefits include eye-hand coordination, good morals, and an appreciation for nature.*







# September 2017

Artist: Gabrielle H.  
8th Grade, Lafourche Parish

Sunday	Monday	Tuesday	Wednesday	Thursday	Friday	Saturday
					1	2
3	4 Labor Day	5	6	7	8	9
10	11	12	13	14	15	16
17	18	19	20	21	22	23
24	25	26	27	28	29	30

*The Tri-colored Heron was also known as the Louisiana Heron. Strikingly slender, with long bill, neck, and legs, it is often seen wading in coastal waters.*









# October 2017

Artist: Reece C., K-2nd Grade Division Winner  
2nd Grade, Terrebonne Parish

Sunday	Monday	Tuesday	Wednesday	Thursday	Friday	Saturday
1	2	3	4	5	6	7
8	9 Columbus Day	10	11	12	13	14
15	16	17	18	19	20	21
22	23	24	25	26	27	28
29	30	31 Halloween				

*Estuaries provide a wide variety of habitats leading to a great biodiversity in the ecosystem.*









# November 2017

Artist: Avery O.  
3rd Grade, St. Charles Parish

Sunday	Monday	Tuesday	Wednesday	Thursday	Friday	Saturday
			1	2	3	4
5	6	7	8	9	10	11 Veterans Day
12	13	14	15	16	17	18
19	20	21	22	23 Thanksgiving Day	24	25
26	27	28	29	30		

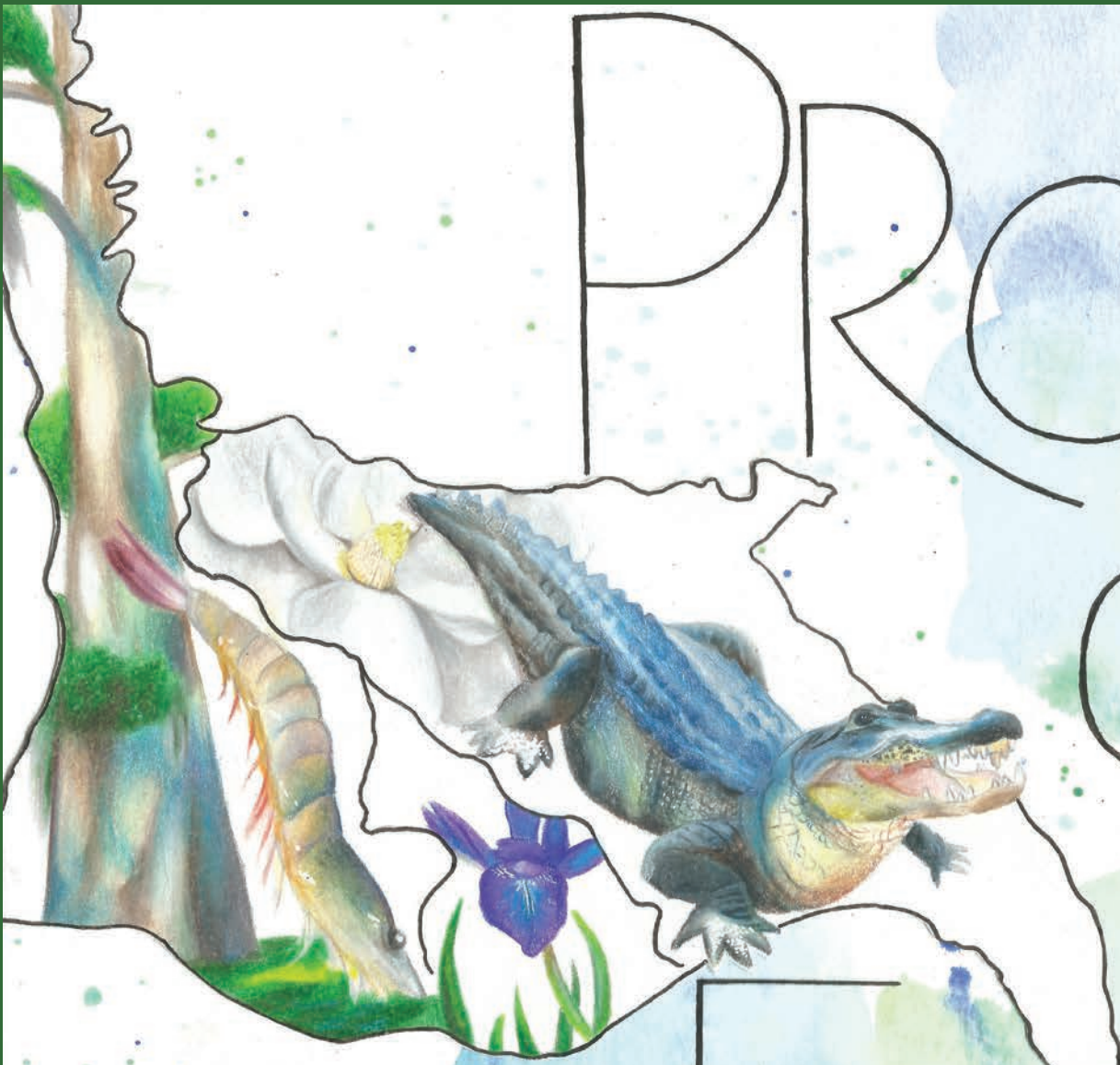
*Beautiful and unique wood ducks are frequently the object of artist and wood carvers.*



PROTECT

Our


ESTUARY





# December 2017

Artist: Abby H., 9th-12th Grade Division Winner  
12th Grade, Jefferson Parish

Sunday	Monday	Tuesday	Wednesday	Thursday	Friday	Saturday
					1	2
3	4	5	6	7	8	9
10	11	12	13	14	15	16
17	18	19	20	21	22	23
24	25 Christmas	26	27	28	29	30
31	<div> <i>BTNEP strives to protect and preserve our estuaries for our future generations.</i>  </div>					



Artist: Noah L.  
2nd Grade, Lafourche Parish

## *Estuary Artworks*

*Providing an  
opportunity for  
students within the  
estuary to express  
their artistic talent.*

*Learn more at  
[www.BTNEP.org](http://www.BTNEP.org)*



Artist: Eva T.  
5th Grade, Lafourche Parish



Artist: Braeden S.  
7th Grade, Lafourche Parish



Artist: Truc N.  
9th Grade, Jefferson Parish

