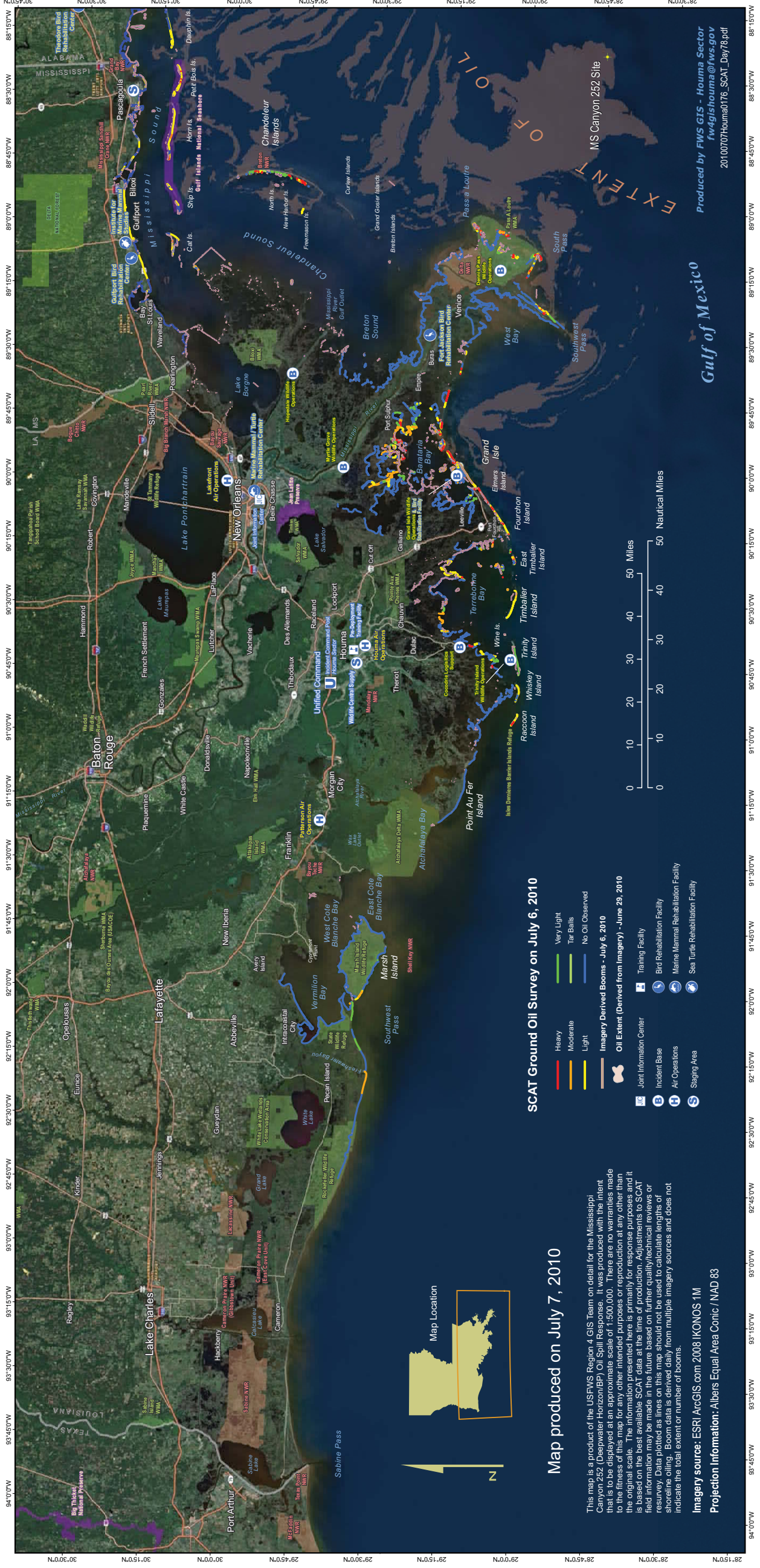




Deepwater Horizon/BP - Daily Oil Impact Assessment DAY 78

HOUMA
SECTOR



SCAT Ground Oil Survey on July 6, 2010

- Very Light
- Moderate
- Light
- Imagery Derived Booms - July 6, 2010
- Oil Extent (Derived from Imagery) - June 29, 2010
- Joint Information Center
- Incident Base
- Air Operations
- Staging Area
- Very Light
- Tar Balls
- No Oil Observed
- Imagery Derived Booms - July 6, 2010
- Oil Extent (Derived from Imagery) - June 29, 2010
- Training Facility
- Bird Rehabilitation Facility
- Maine Mammal Rehabilitation Facility
- Sea Turtle Rehabilitation Facility

Map produced on July 7, 2010

This map is a product of the USFWS Region 4 GIS Team on detail for the Mississippi Canyon 252 (Deepwater Horizon/BP) Oil Spill Response. It was produced with the intent that it is to be displayed at an approximate scale of 1:500,000. There are no warranties made to the fitness of this map for any other intended purposes or reproduction at any other than the original scale. The information presented here is primarily for response purposes and it is based on the best available SCAT data at the time of production. Adjustments to SCAT field information may be made in the future based on further quality/technical reviews or resurvey. Data plotted as lines on this map should not be used to calculate lengths of shoreline oiling. Boom data is derived daily from multiple imagery sources and does not indicate the total extent or number of booms.

Imagery source: ESRI ArcGIS.com 2008 IKONOS 1M
Projection Information: Albers Equal Area Conic INAD 83

Gulf of Mexico

Produced by FWS GIS - Houma Sector
fw4gishouma@fws.gov
20100707Houma0176_SCAT_Day78.pdf