

Mississippi River Reintroduction into Bayou Lafourche (BA-0161)



**BTNEP Management Conference
February 5, 2015**

Benjamin J. Malbrough, P.E.
Executive Director
ben.malbrough@blfwd.org

Bayou Lafourche Fresh Water District



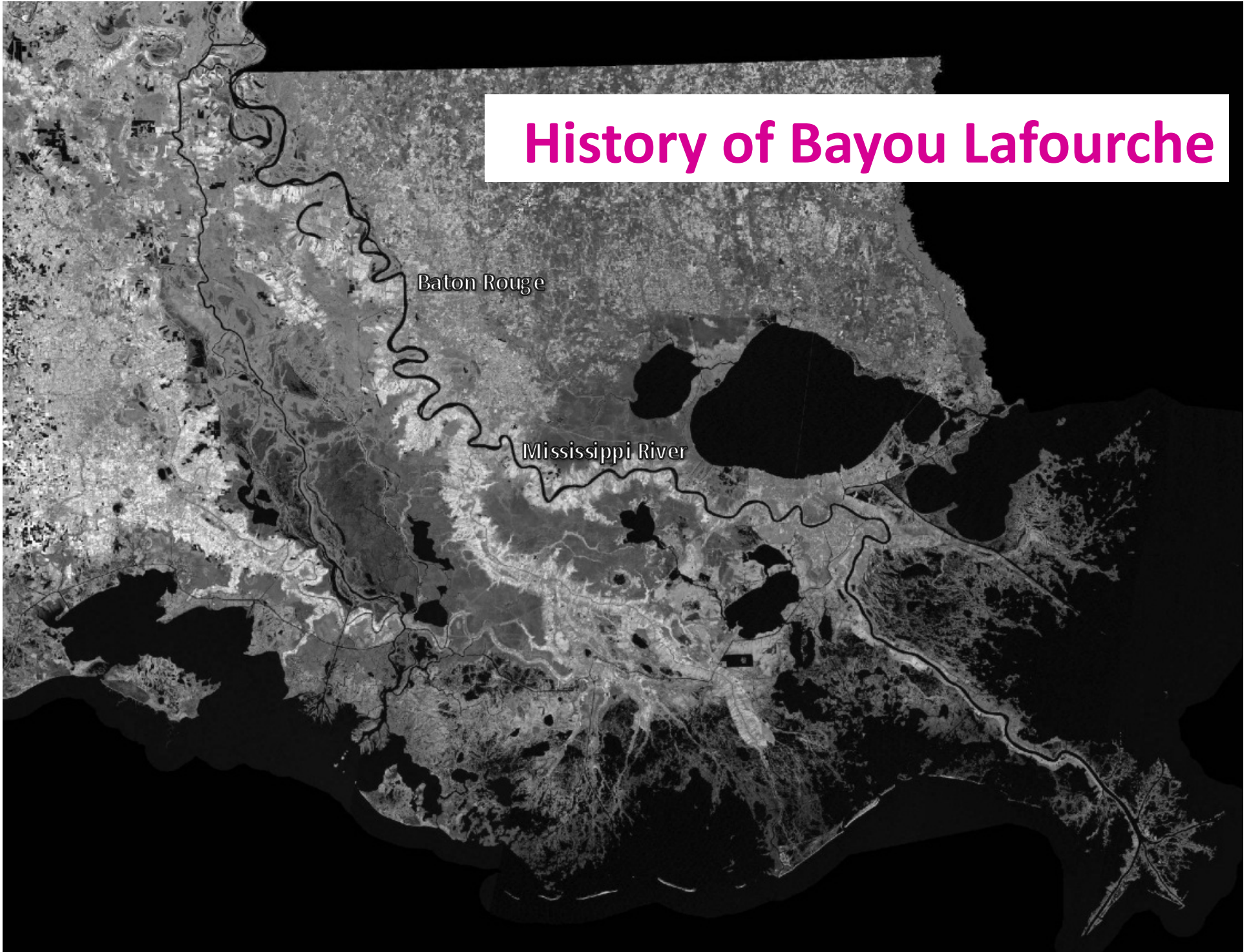
- History of Bayou Lafourche
- History of MRRBL
- MRRBL Phase II Update
- Future Plans



History of Bayou Lafourche

Baton Rouge

Mississippi River



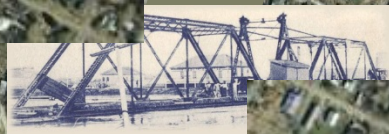


Google™

1850



1873



Google

1904



Google

1934

5'x 6' box
culvert



Google

1955

Two
100''d
culverts

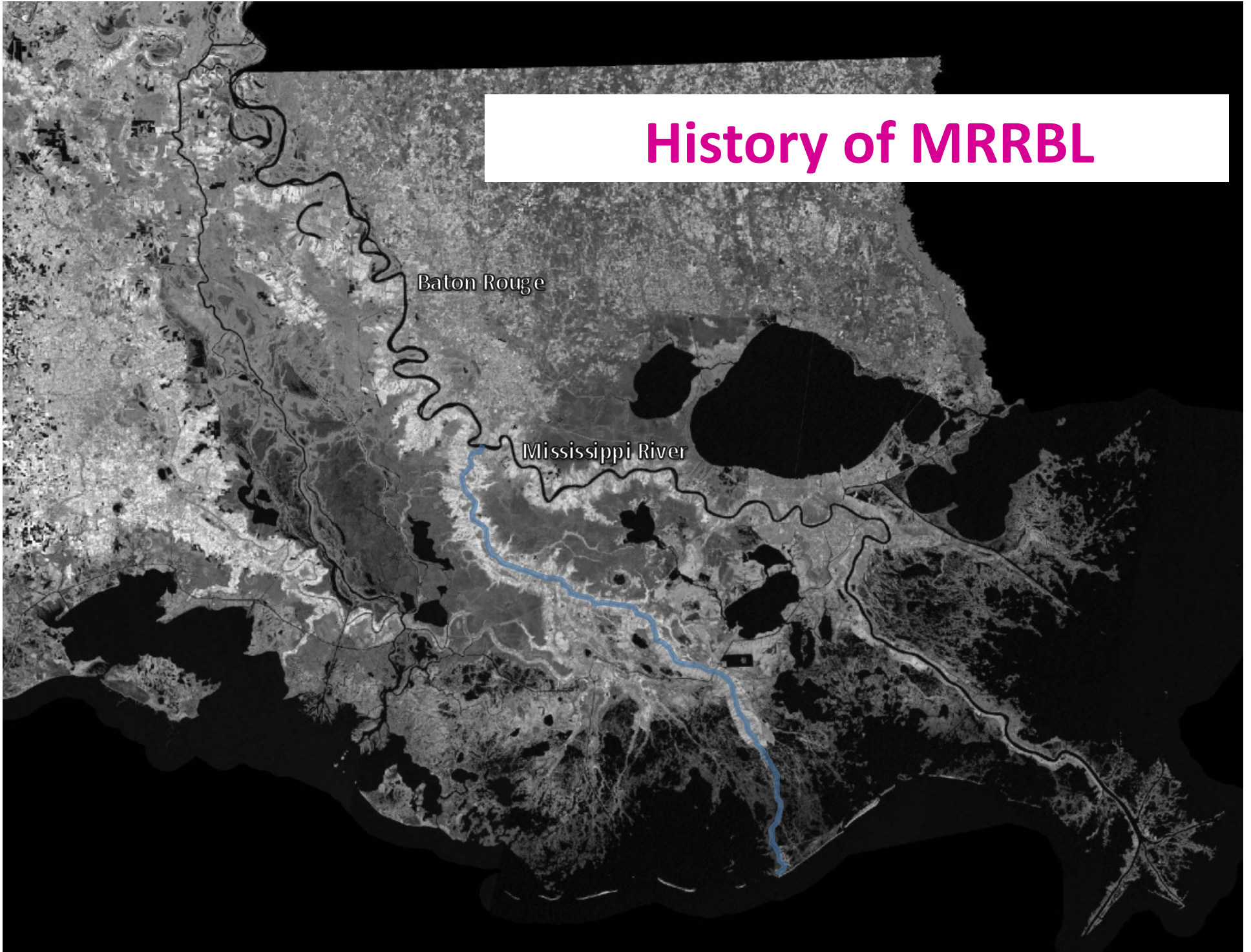


Google

History of MRRBL

Baton Rouge

Mississippi River



- 1993 – conceptual project proposed in the Louisiana Coastal Wetlands Restoration Plan.
- 1995 – EPA and BLFWD developed a more specific proposal included on CWPPRA PPL-5.
- 1996 – project is further refined and designated by CWPPRA as Project PBA- 20.
- 1997 – Coastal Engineering and Environmental Consultants evaluates dredging templates and conveyance through eastern marsh alternatives.
- 1998 – EPA conceptually redesigns the project to include pumping capacity, a reduction of target flow to 1000 cfs, and bank stabilization.

- 2001 – State of Louisiana agrees to fund 50% of cost share for E&D, CWPPRA agrees to proceed with Phase 1.
- November 2005 – Phase 1 E&D completed, focusing on conveyance routes and hydraulic capacity. 144 alternatives were developed, evaluated, and reduced to 5 alternatives.
- March 2006 – Phase 2 E&D completed, focusing on evaluating 2 additional alternatives and modeling benefits, selecting final alternative (#38), and achieving 30% design level.
- August 2006 – CWPPRA votes to cease funding the project for further project design.

- September 2006 – State of Louisiana commits to the project and independently fund 100% of the project E&D costs; begins scope and budget negotiations with E&D contractor.
- April 2007 – CH2M Hill initiates final E&D.
- August 2007 – LDNR internally reevaluates dredge template / permits / pump-only diversion structure and develops Early Action Project Path.
- September 2007 – LDNR enters into Cooperative Endeavor Agreement with BLFWD to purchase property at head of Bayou within the critical infrastructure corridor.
- October 2007 – CWPPRA deauthorizes BA-25b.

- September 2008 – **HURRICANE GUSTAV MAKES LANDFALL**
- November 2008 – CPRA and BLFWD enter into a Cooperative Endeavor Agreement for “Phase 1” of the project.
- April 2009 – CPRA and BLFWD approve and accept final Plans and Specifications for Phase 1.
- November 2009 – Construction begins on Phase 1 Project.
- November 2011 – Substantial Completion of Construction

Final Phase 2 Design Report

Mississippi River Water Reintroduction Into Bayou Lafourche



Prepared for



March 2006

Prepared by



In association with:
T. Baker Smith, Inc.
FTN Associates, Ltd.
Eustis Engineering Company, Inc.
Jaymac Consultants
C-K Associates, Inc.

**Built on over 12 years of work
done by multiple Agencies
and Consultants**

**Utilized detailed surveying for
the development of a
complex hydrodynamic model
for the 100-mile length of the
bayou**

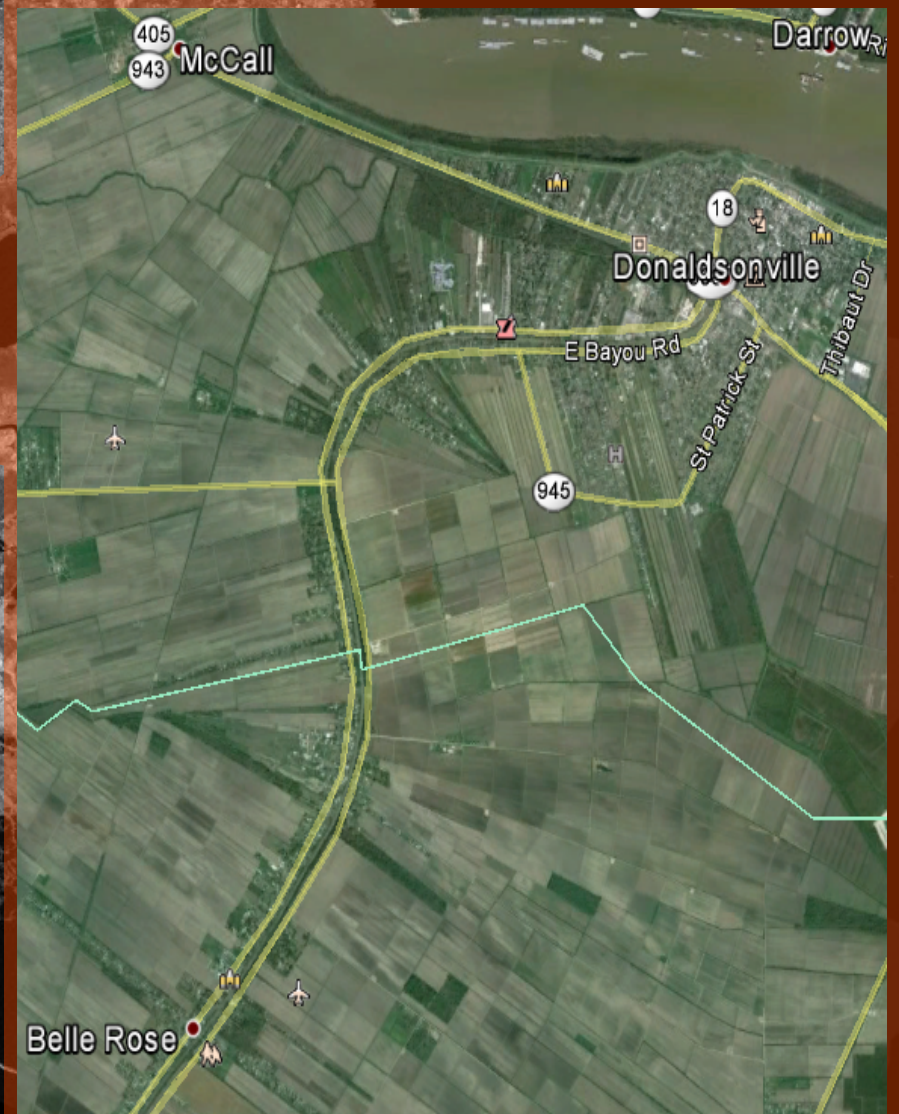
**Scrutinized 144 alternatives
to solve the Bayou Lafourche
problems**

**Identified 4 major
components to be
implemented to achieve
1,000-1,500 cfs into Bayou
Lafourche**

MAJOR PROJECT COMPONENTS of MRRBL

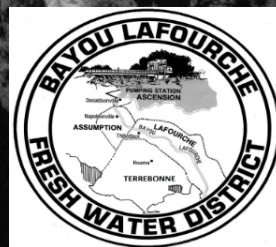


Phase I Dredging





MRBBL Phase II Update

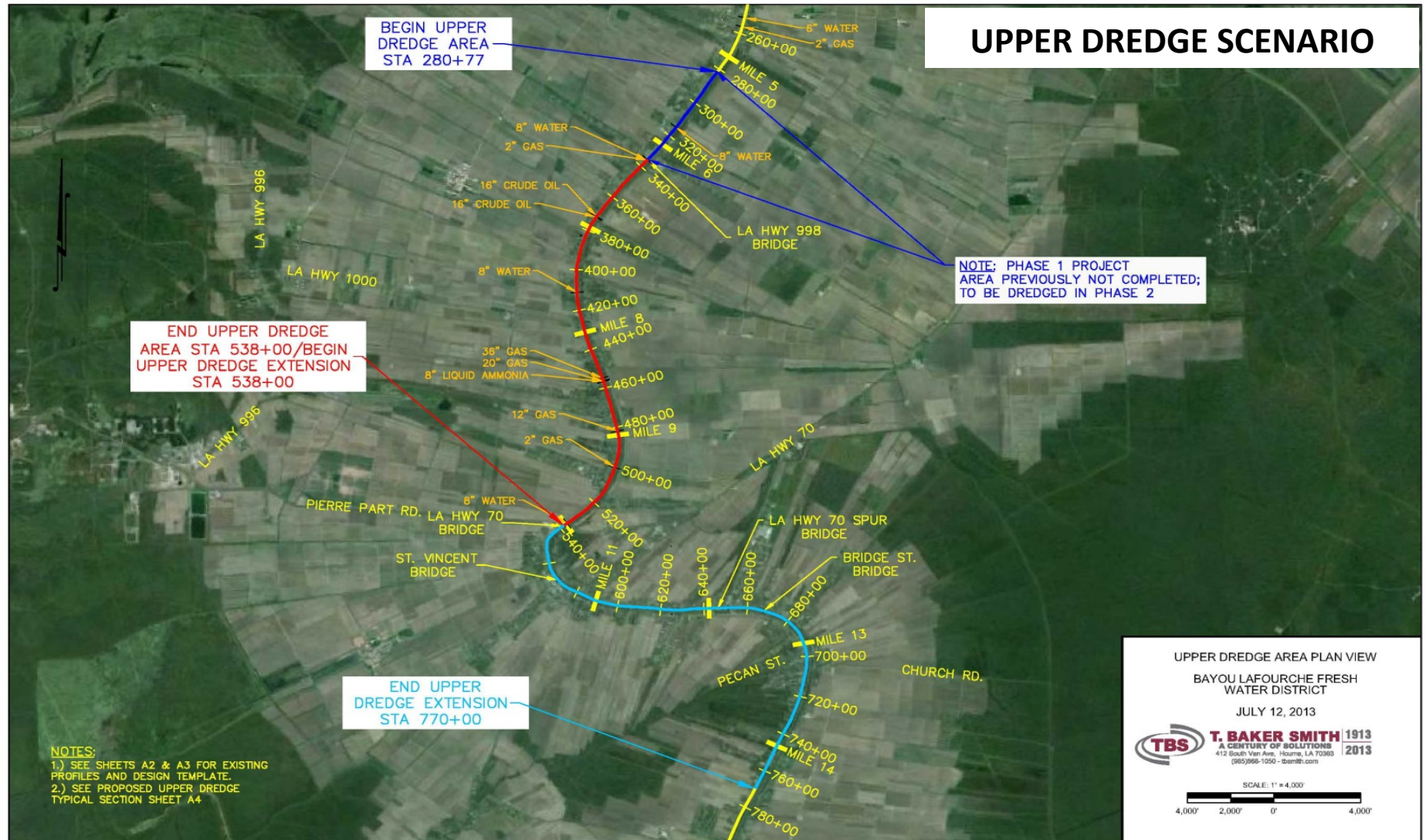


MRRBL Phase II Timeline

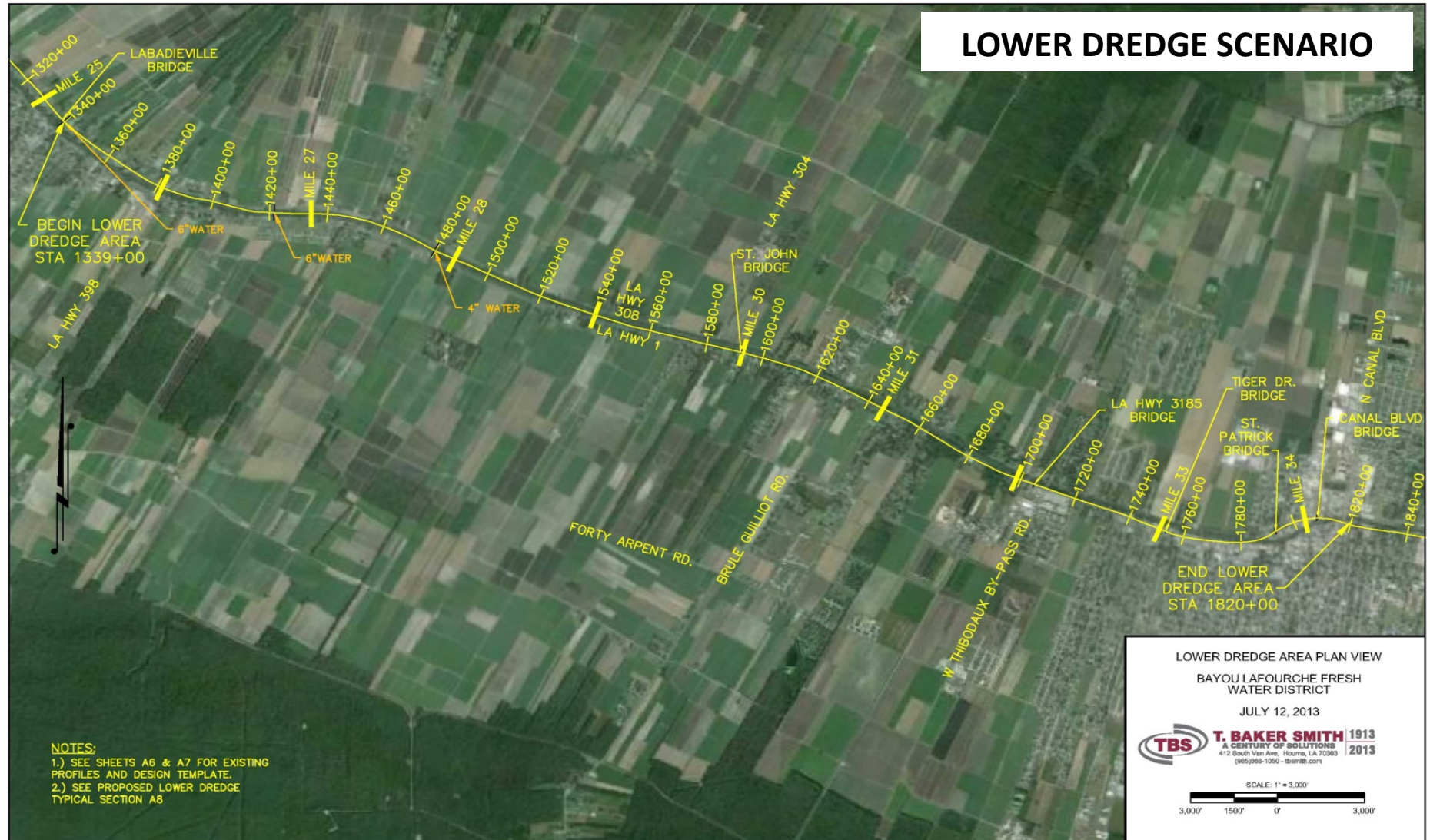
- Executed Contract for Engineering and Design in April of 2013
- Submitted Data Analysis and Recommendation Report to CPRA in August of 2013
- Submitted Preliminary Design Report to CPRA in July 2014
- Submitted Final Design Report to CPRA in January 2015
- Advertisement for Construction starts TODAY!!!!!!!!!!



Data Analysis and Recommendation

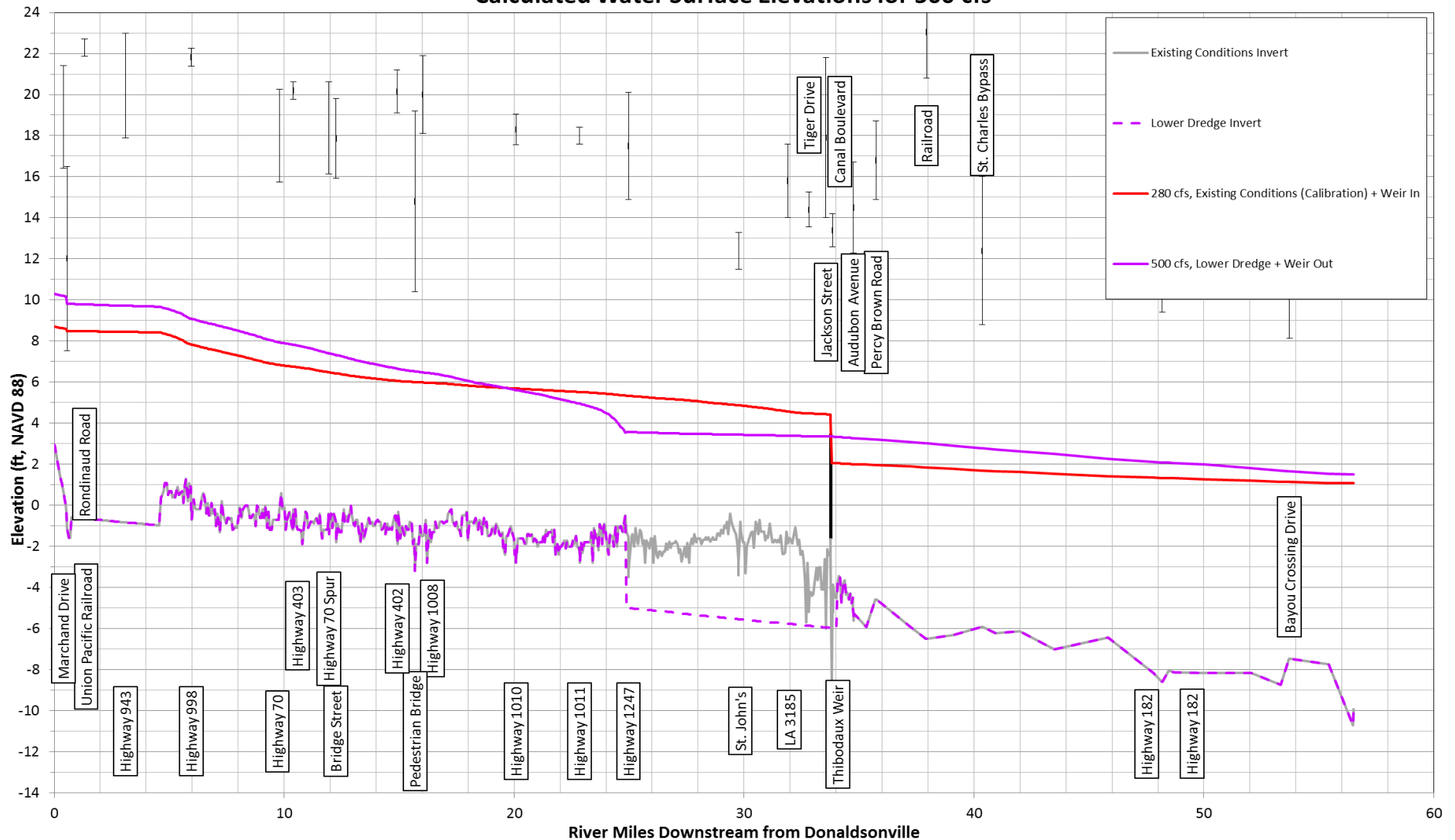


Data Analysis and Recommendation



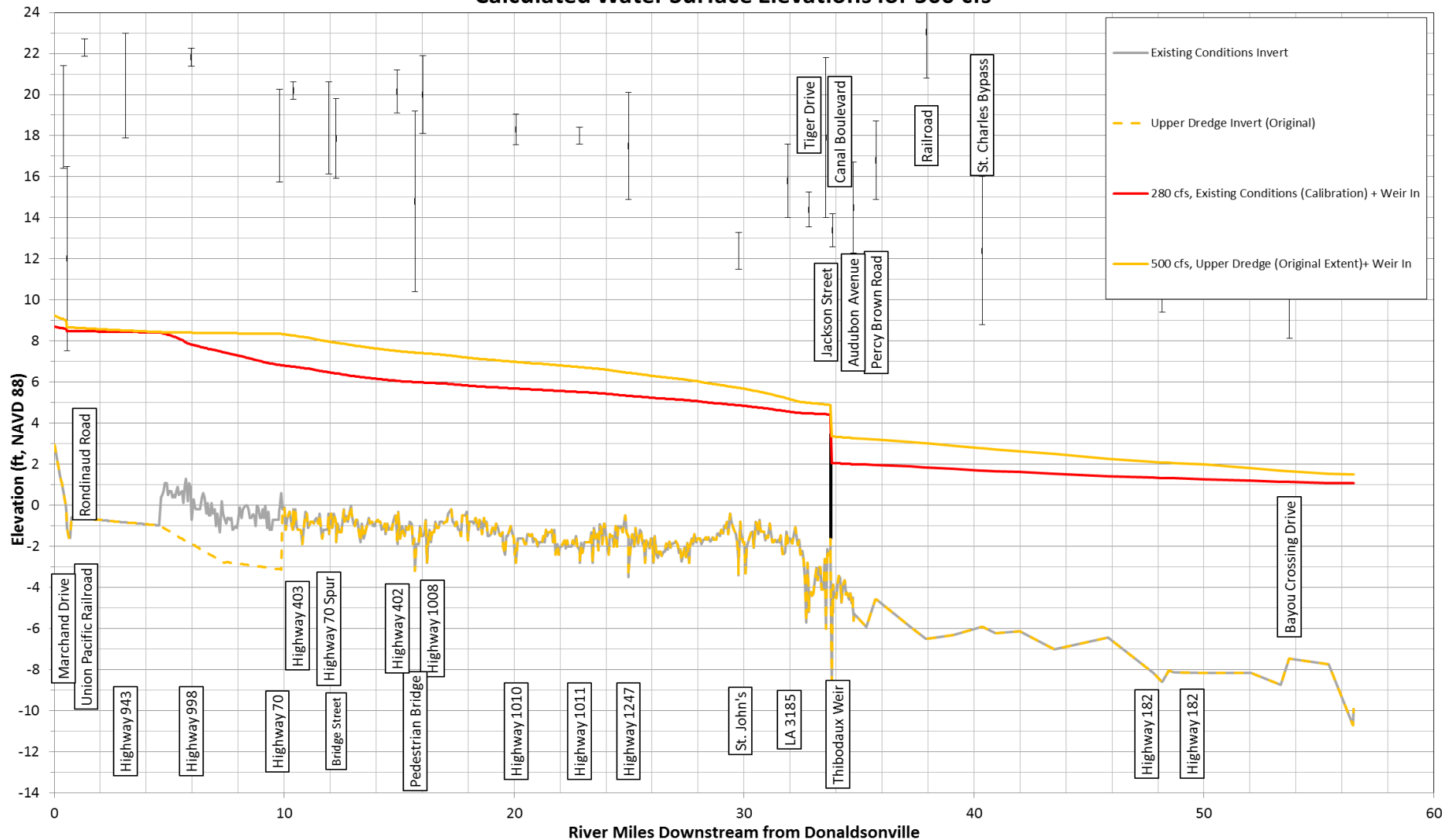
Data Analysis and Recommendation

Calculated Water Surface Elevations for 500 cfs



Data Analysis and Recommendation

Calculated Water Surface Elevations for 500 cfs



PROJECT REACH AREAS

REACH LOCATIONS	BEGIN STATION	END STATION
REACH-A	280+00	340+00
REACH-B	340+00	426+00
REACH-C	426+00	540+00
REACH-D	540+00	590+00
REACH-E	590+00	667+00
REACH-F	667+00	720+00

BEGIN PROJECT AREA / BASE BID STA: 280+00

END PROJECT AREA / ALTERNATE 1 STA: 720+00

END BASE BID / BEGIN ALTERNATE 1 STA: 667+00.00

SPOIL DISPOSAL AREA No.1 / REACH-A STA: 280+00 TO STA: 340+00 SEE SPOIL DISPOSAL AREA No.1 SHEET 46

SPOIL DISPOSAL AREA No.2a / REACH-B STA: 340+00 TO STA: 426+00 SEE SPOIL DISPOSAL AREA No.2 SHEET 48

SPOIL DISPOSAL AREA No.2b / REACH-B STA: 340+00 TO STA: 426+00 SEE SPOIL DISPOSAL AREA No.2 SHEET 48

SPOIL DISPOSAL AREA No.3 / REACH-C STA: 426+00 TO STA: 540+00 SEE SPOIL DISPOSAL AREA No.3 SHEET 51

SPOIL DISPOSAL AREA No.4 / REACH-D STA: 540+00 TO STA: 590+00 SEE SPOIL DISPOSAL AREA No.4 SHEET 54

SPOIL DISPOSAL AREA No.5 / REACH-E STA: 590+00 TO STA: 667+00 SEE SPOIL DISPOSAL AREA No.5 SHEET 56

SPOIL DISPOSAL AREA No.6 / REACH-F STA: 667+00 TO STA: 720+00 SEE SPOIL DISPOSAL AREA No.7 SHEET 58

ACCESS AREA No.1b SEE ACCESS AREA PLAN VIEW SHEET 61

ACCESS AREA No.2 SEE ACCESS AREA PLAN VIEW SHEET 62

ACCESS AREA No.3 SEE ACCESS AREA PLAN VIEW SHEET 63

ACCESS AREA No.4 SEE ACCESS AREA PLAN VIEW SHEET 64

ACCESS AREA No.5 SEE ACCESS AREA PLAN VIEW SHEET 65

ACCESS AREA No.6 SEE ACCESS AREA PLAN VIEW SHEET 66

LA HWY 998 BRIDGE

LA HWY 308

LA HWY 70 BRIDGE

ST. VINCENT BRIDGE

BRIDGE ST. BRIDGE

COSA NATURAL RD

PROPOSED SPOIL AREA

PROPOSED PIPELINE ACCESS ROUTE

NOTES:

T.B.S.

T. BAKER SMITH SOLUTIONS START HERE

1106 South Acadia Road, Thibodaux, LA 70301

(504) 484-7073 - E-mail: tbs@tbsolutions.com

PLAN

DRAWN BY: TSH APPROVED BY: BUR

DATE: 08/14 JOB NO: 2013.009

DRAWING NAME: 13.02H_P04.dwg

PLOTTER: PLOTTER

GRID UNITS: US SURVEY FOOT

SHEET NO: 4

OVERALL PLAN

BAYOU LAFORCHE FRESH WATER DISTRICT

MISSISSIPPI RIVER RE-INTRODUCTION INTO BAYOU LAFORCHE

PHASE 2 PROJECT

LOCATED IN T12S-R14E & T13S-R14E ASSUMPTION PARISH, LOUISIANA

Seeing the Difference

Dredged Section



Un-Dredged Section



What's Next for MRRBL

- Continuation of Dredging from Napoleonville to Thibodaux (and possibly further)
- Address the Flow Restriction at the UP Railroad in Donaldsonville
- Construction of New Pump Station
- Construction of Water Control Structures
- Removal of the Thibodaux Weir



Get Involved!

Bayou Lafourche Annual Clean Up MARCH 14, 2015



Paddle Bayou Lafourche APRIL 9-12

Stay Informed!

Check out our website!
www.blfwd.org



Visit us on Facebook!
www.facebook.com/blfwd



Coming Soon: E Newsletter



Contact Us

Bayou Lafourche Fresh Water District

1016 St. Mary Street
Thibodaux, LA 70301

Benjamin J. Malbrough, P.E.

Executive Director

(985)-447-7155 (office)

(985)-856-1579 (cell)

ben.malbrough@blfwd.org

OTHER MAJOR PROJECTS



Pump Station Upgrades - \$4 million



Saltwater Control Structure - \$3 million



Infrastructure Upgrades - \$30 million