

# Mississippi River Long Distance Sediment Pipeline (BA-43) and Bayou Dupont Marsh and Ridge Creation (BA-48) and Other Marsh Creation Projects in the BTNEP



Coastal Protection and  
Restoration Authority of Louisiana



## Management Conference

May 8, 2014



committed to our coast

## Coastal Restoration- January 2008 through FY 15

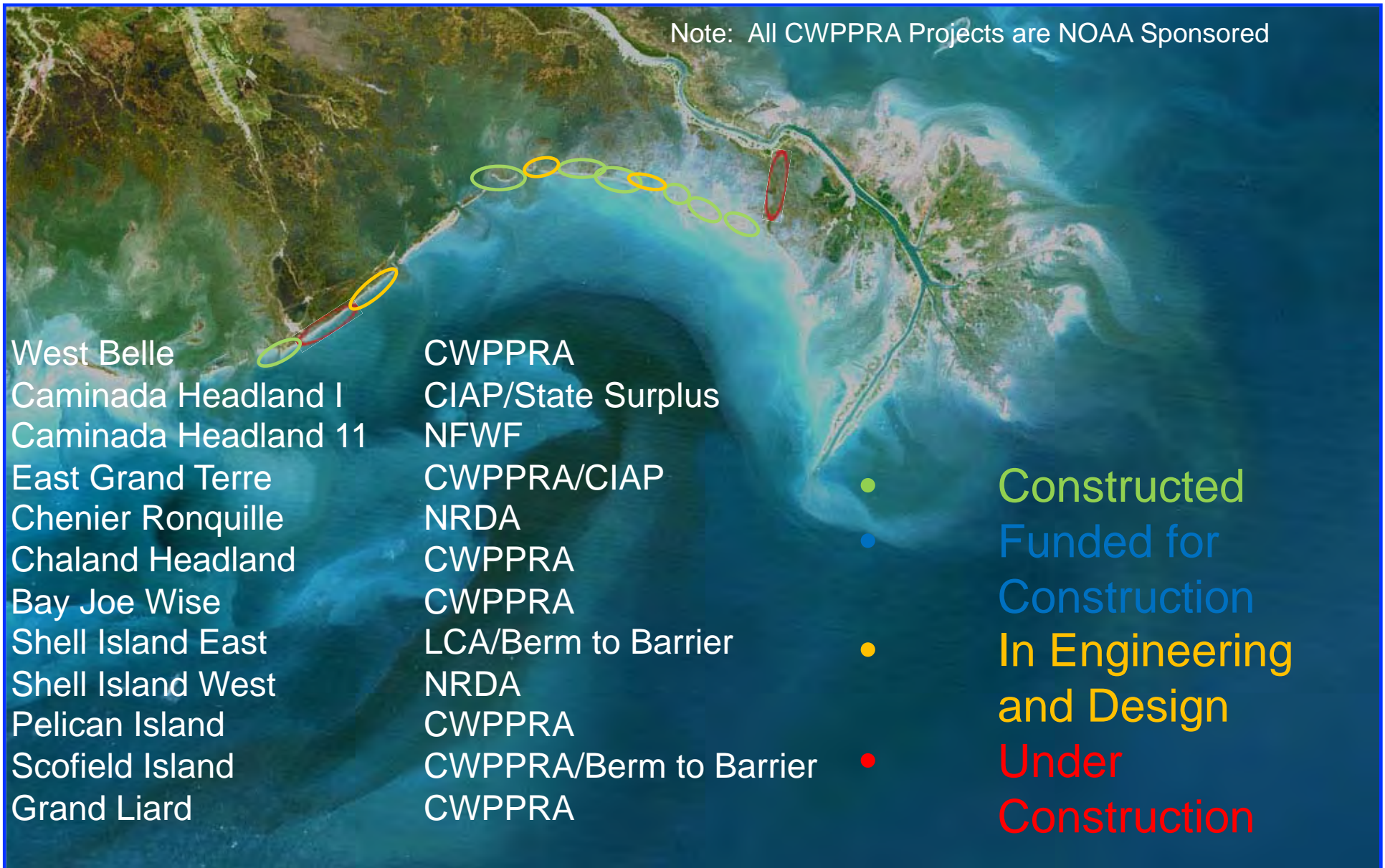
	Constructed		Under Construction		Anticipated to be bid for construction in FY14		Anticipated to be bid for construction in FY15		TOTALS	
	#	Total Cost	#	Total Cost	#	Total Cost	#	Total Cost	#	Total Cost
Barrier Island/Headland Restoration	7	\$477,786,741	3	\$177,319,064	1	\$147,063,587	2	\$214,269,971	13	\$1,016,439,363
Marsh Creation	9	\$156,461,322	8	\$227,986,592	2	\$17,538,649	7	\$118,548,958	26	\$520,535,521
Shoreline Protection	13	\$247,622,006	5	\$77,810,707	1	\$26,351,988	1	\$11,305,616	20	\$363,090,317
Hydrologic Restoration	6	\$66,824,678	2	\$5,500,000	1	\$4,500,000	4	\$20,657,459	13	\$97,482,137
Diversions	1	\$20,000,000	0	\$0	0	\$0	1	\$20,000,000	2	\$40,000,000
Oyster Barrier Reefs	1	\$1,510,433	0	\$0	0	\$0	1	\$26,500,000	2	\$28,010,433
	<b>37</b>	<b>\$970,205,181</b>	<b>18</b>	<b>\$488,616,363</b>	<b>5</b>	<b>\$195,454,224</b>	<b>16</b>	<b>\$411,282,004</b>	<b>76</b>	<b>\$2,065,557,772</b>

## Structural Protection and Infrastructure - January 2008 through FY 15

	Constructed		Under Construction		Anticipated to be bid for construction in FY14		Anticipated to be bid for construction in FY15		TOTALS	
	#	Total Cost	#	Total Cost	#	Total Cost	#	Total Cost	#	Total Cost
Greater New Orleans Hurricane Protection System		\$4,984,256,580		\$3,748,755,700		TBD		TBD		\$8,733,012,280
Other Protection Projects	4	\$1,082,944,536	8	\$797,949,744	3	\$460,698,857	6	\$46,500,000	21	\$2,388,093,137
Infrastructure Projects	9	\$58,141,779	1	\$3,194,355	4	\$17,550,218	1	\$4,890,000	15	\$83,776,352
	<b>13</b>	<b>\$6,125,342,895</b>	<b>9</b>	<b>\$4,549,899,799</b>	<b>7</b>	<b>\$478,249,075</b>	<b>7</b>	<b>\$51,390,000</b>	<b>36</b>	<b>\$11,204,881,769</b>

# Recent and Future Barrier Island Projects

Note: All CWPPRA Projects are NOAA Sponsored



# Past Construction



Coastal Protection and  
Restoration Authority of Louisiana



committed to **our coast**





Coastal Protection and  
Restoration Authority of Louisiana

Total Project Budget

Acres Benefited

Linear Feet/

Construction Completion Date

Funding Programs

\$150 million

616 dune/877 marsh

31,900 lf/6miles

August 2013

CWPPRA/Berm to

committed to **our coast**



**Riverine Sand Mining – Scofield Island  
Restoration  
November 2012**





**Riverine Sand Mining – Scofield Island  
Restoration  
April 2013**



**Riverine Sand Mining – Scofield Island  
Restoration  
December 2013**





**Shell Island East  
Barrier Island Restoration  
June 2012**



**Shell Island East  
Barrier Island Restoration  
May 2013**





**Shell Island East  
Barrier Island Restoration  
August 2013**

# Barataria Basin Land Bridge (BA-27) CU 1-6



Total Project Budget

\$40.8 million

Linear Feet

94,468 lf

Construction Completion Date

July 2009

Funding Program

CWPPRA /NRCS



CPRA  
Coastal Protection and  
Restoration Authority of Louisiana



ed to our coast





# Dedicated Dredging on the Barataria Basin Landbridge (BA-36)

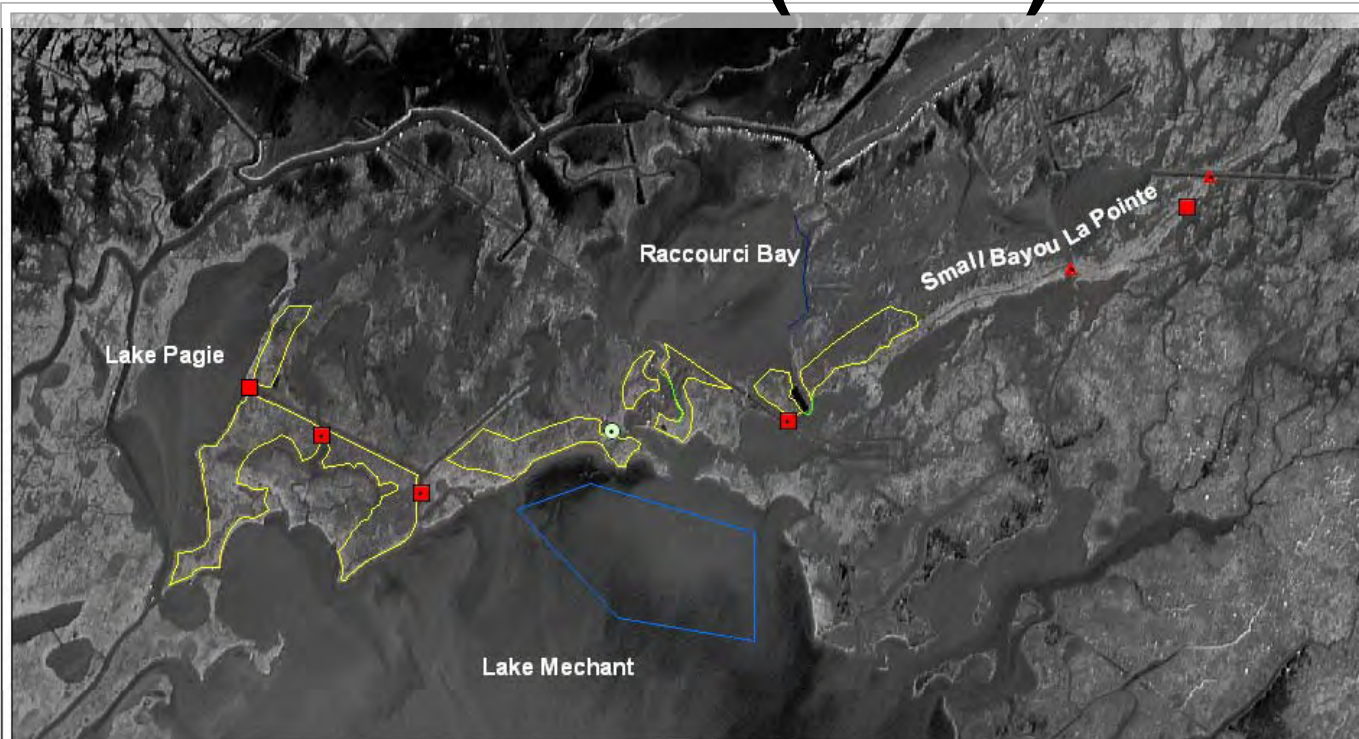
Total Project Budget	\$36.3 million
Marsh Created/Nourished	2,789 acres
Construction Completion Date	March 2010
Funding Programs	CWPPRA /USFWS CIAP (\$18M) Surplus (\$2.4M)



# North Lake Mechant Landbridge Restoration (TE-44)



Coastal Protection and  
Restoration Authority of Louisiana



## North Lake Mechant Landbridge Restoration Project CU-2: Phase II Project Features

0 1,950 3,900 7,800 11,700 15,600  
Feet



Total Project Budget

Marsh Creation

Construction Completion Date

Funding Program

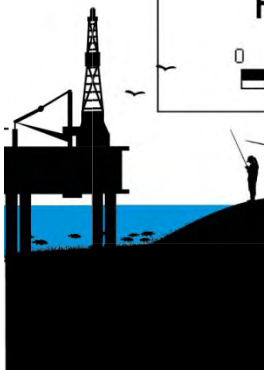
\$32.3 million

901 acres

February 2010

CWPPRA /USFWS

mitted to **our coast**



# Whiskey Island Back Barrier Marsh Creation (TE-50)



Coastal Protection and  
Restoration Authority of Louisiana

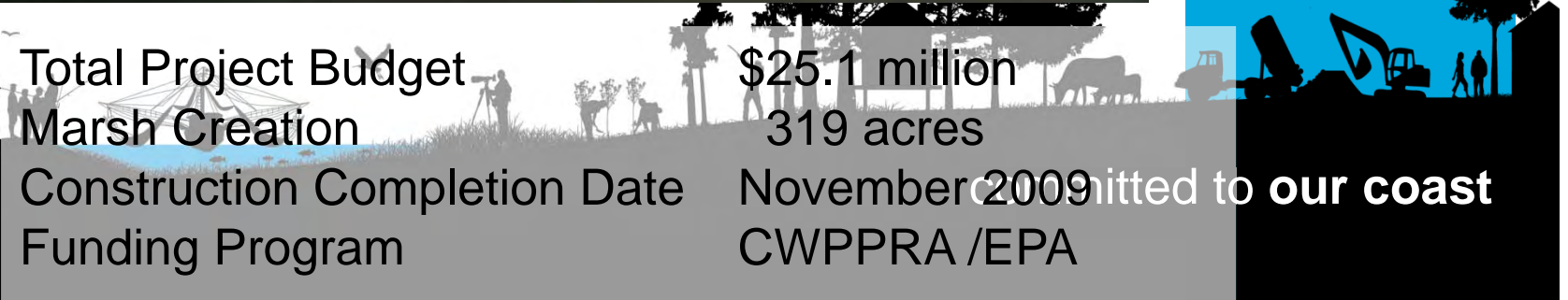


Total Project Budget  
Marsh Creation

\$25.1 million  
319 acres

Construction Completion Date  
Funding Program

November 2009  
CWPPRA /EPA  
mitted to **our coast**





# West Belle Pass Barrier Headland Restoration (TE-52)



Coastal Protection and  
Restoration Authority of Louisiana

Total Project Budget

\$33.9 million

Marsh Creation

333 acres

Construction Completion Date

October 2012

Funding Program

CWPPRA /NMFS

Committed to **our coast**





# Under Construction



Coastal Protection and  
Restoration Authority of Louisiana

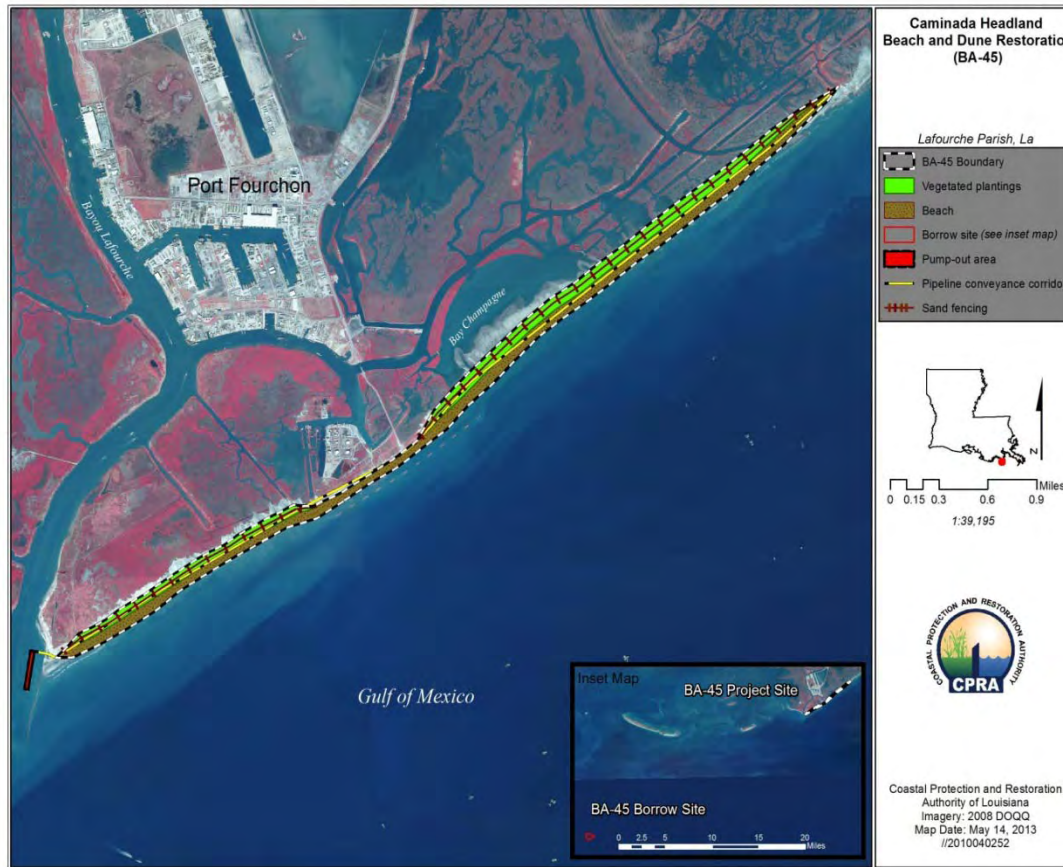


committed to **our coast**

# Caminada Headland Beach and Dune Restoration (BA-45)



Coastal Protection and  
Restoration Authority of Louisiana



Total Project Budget  
Linear Feet  
Status  
Funding Programs

\$70 million  
31,000 (303 acres)  
Construction - Weeks  
CIAP/State Surplus

committed to our coast





**Caminada Headland Beach and Dune  
Restoration – Increment I  
June 2013**








**Caminada Headland Beach and Dune  
Restoration – Increment I  
November 2013**



# Grand Liard Ridge and Marsh Restoration (BA- 68)

## Grand Liard Ridge and Marsh Restoration (BA-68)

-  Ridge Restoration \*
  -  Marsh Creation \*
  -  Project Boundary
- \*denotes proposed features

**USGS**  
science for a changing world



0.2 0 0.2 0.4  
Kilometers

0.2 0 0.2 0.4  
Miles

Map Produced by:  
U.S. Department of the Interior  
U.S. Geological Survey  
National Wetlands Research Center  
Coastal Restoration Field Station  
Baton Rouge, La.

Background Imagery:  
2010 NAIP Photography

Map Date: 12, 2011  
Map ID: USGS-11-0058  
Data accurate as of: August 09, 2011

Total Project Budget  
Marsh Created  
Ridge  
Status  
Funding Program

\$33.5 million  
468  
20,000 lf (34 acres)  
Construction – Weeks Marine Inc.  
CWPPRA /NMFS

Chicharas Bay

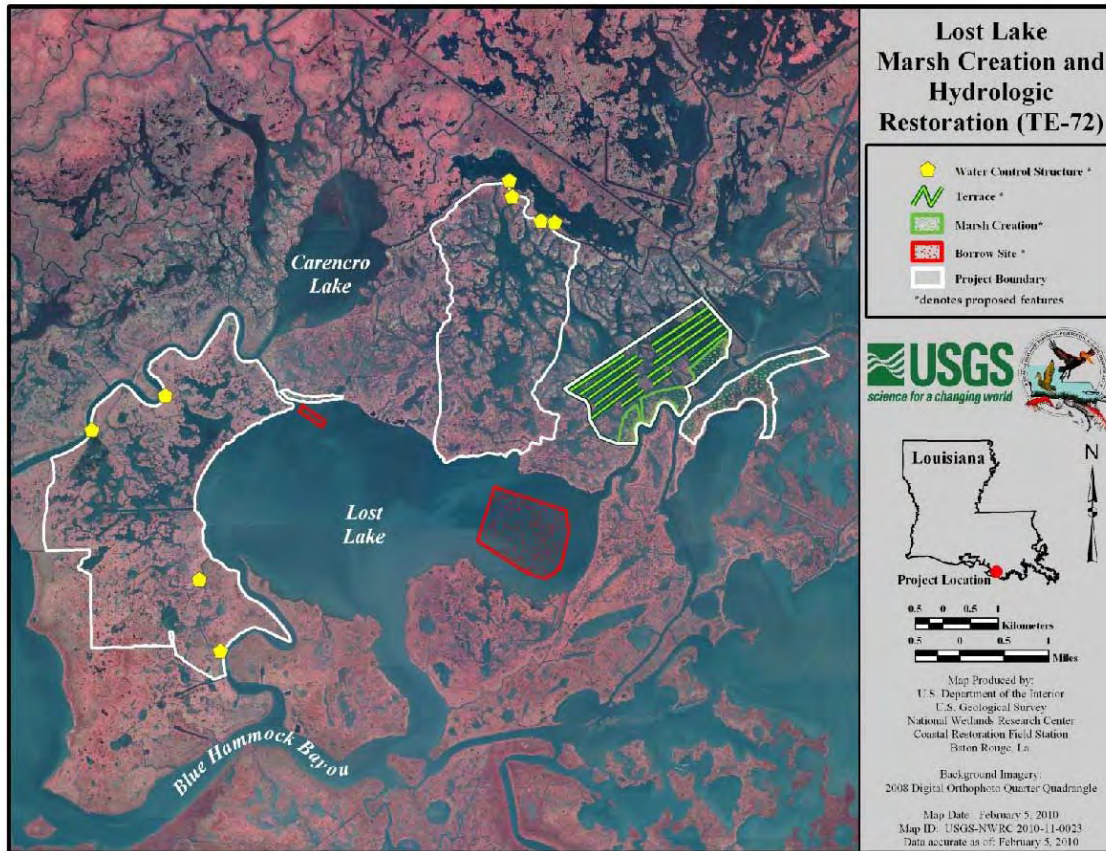
Baton Grand Lake



# Lost Lake Marsh Creation and Hydrologic Restoration (TE-72)



Coastal Protection and  
Restoration Authority of Louisiana



Total Project Budget  
Marsh Created  
Status  
Funding Programs

\$500,000  
468  
Funded for Construction  
CWPPRA/USFWS



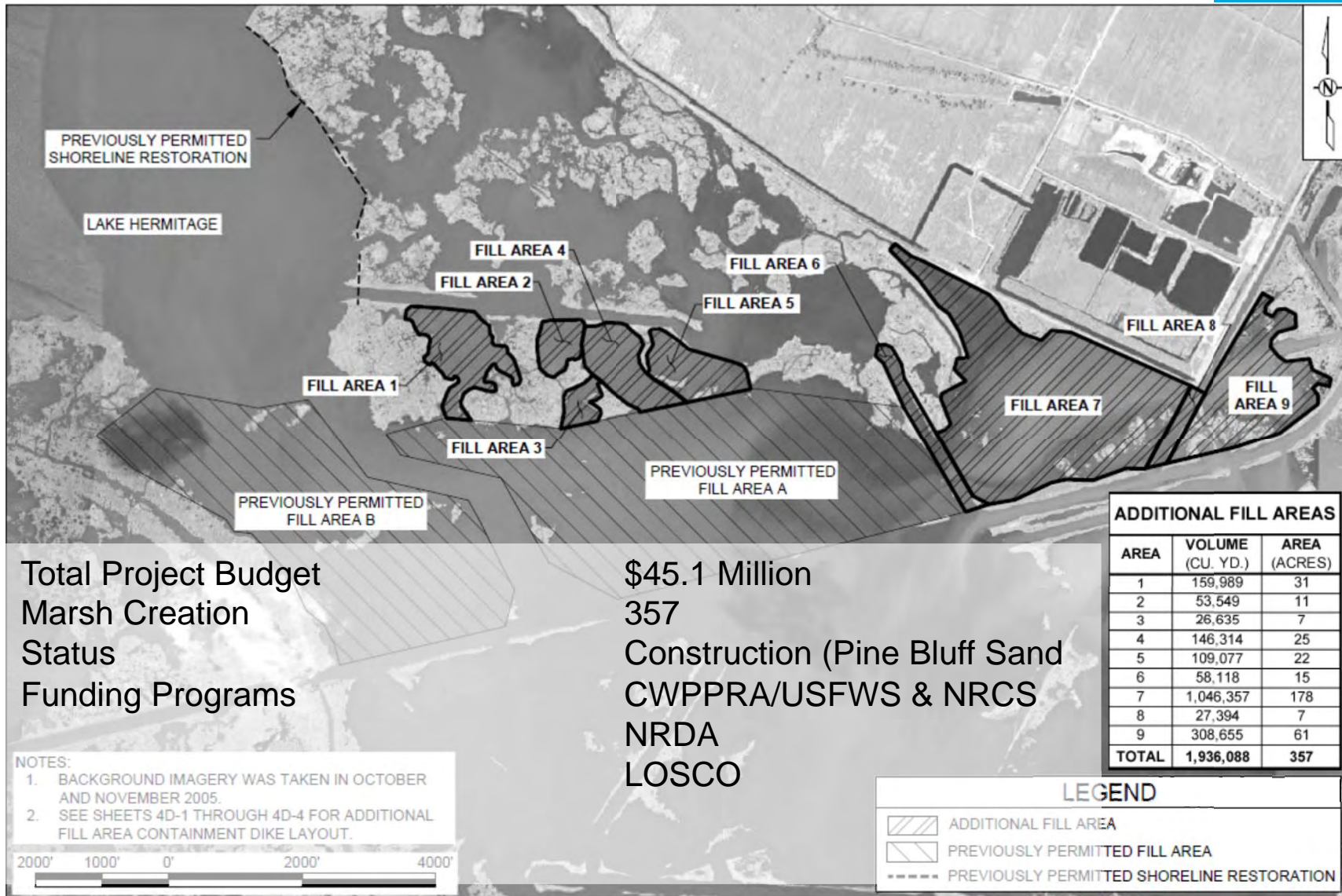
committed to our coast



# Lake Hermitage Marsh Creation (BA-42) and West Pointe a la Hache Marsh Creation (BA-47)



CPRA  
Coastal Protection and  
Restoration Authority of Louisiana



Total Project Budget  
Marsh Creation  
Status  
Funding Programs

\$45.1 Million  
357  
Construction (Pine Bluff Sand  
CWPPRA/USFWS & NRCS  
NRDA  
LOSCO







**Lake Hermitage Marsh  
Creation      February 2013**





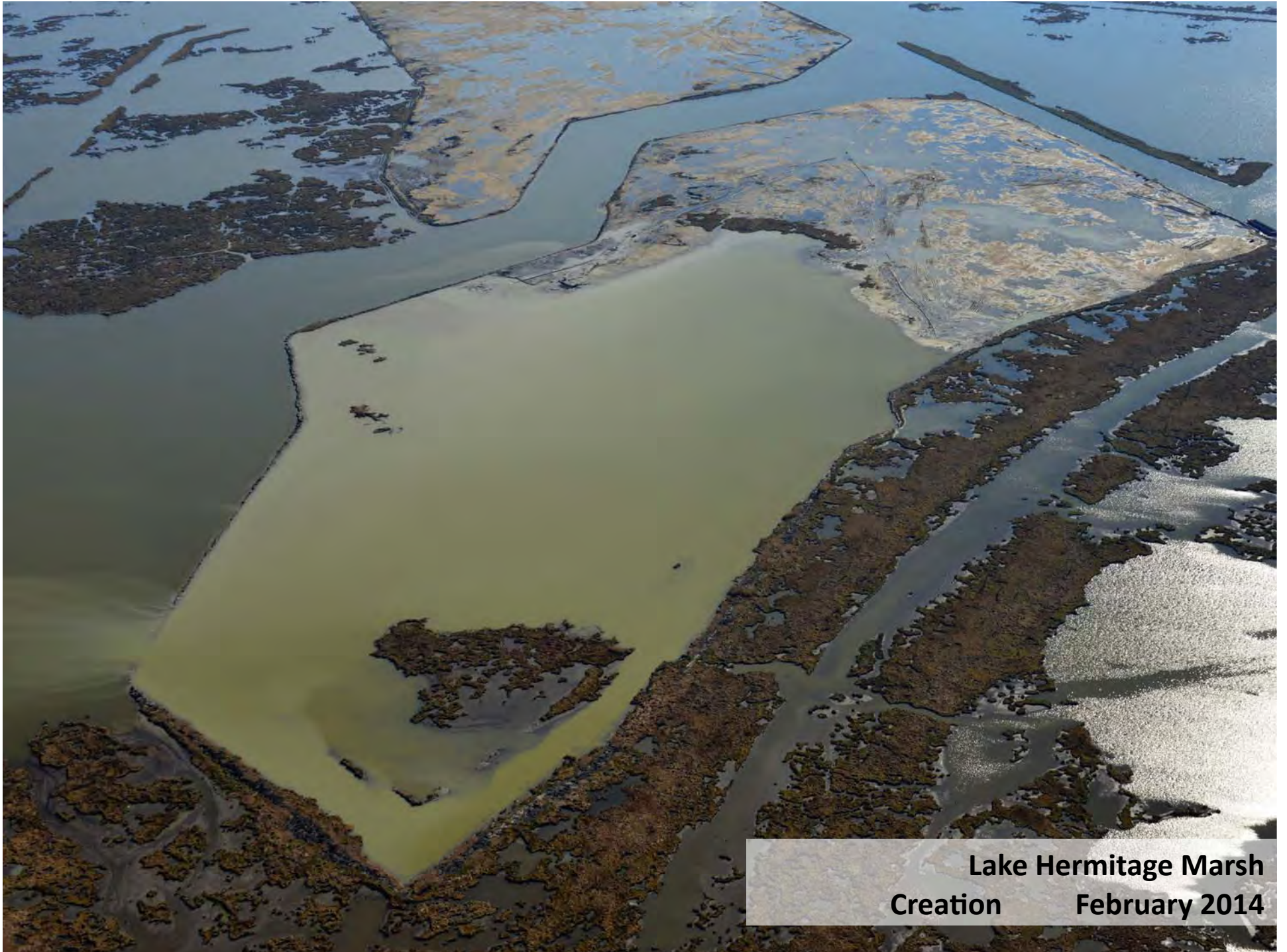
**Lake Hermitage Marsh  
Creation      February 2014**





**Lake Hermitage Marsh  
Creation February 2013**





**Lake Hermitage Marsh  
Creation      February 2014**

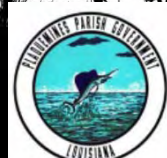


# MISSISSIPPI RIVER LONG DISTANCE SEDIMENT PIPELINE (BA-43 EB)

## BAYOU DUPONT MARSH AND RIDGE CREATION (BA-48)



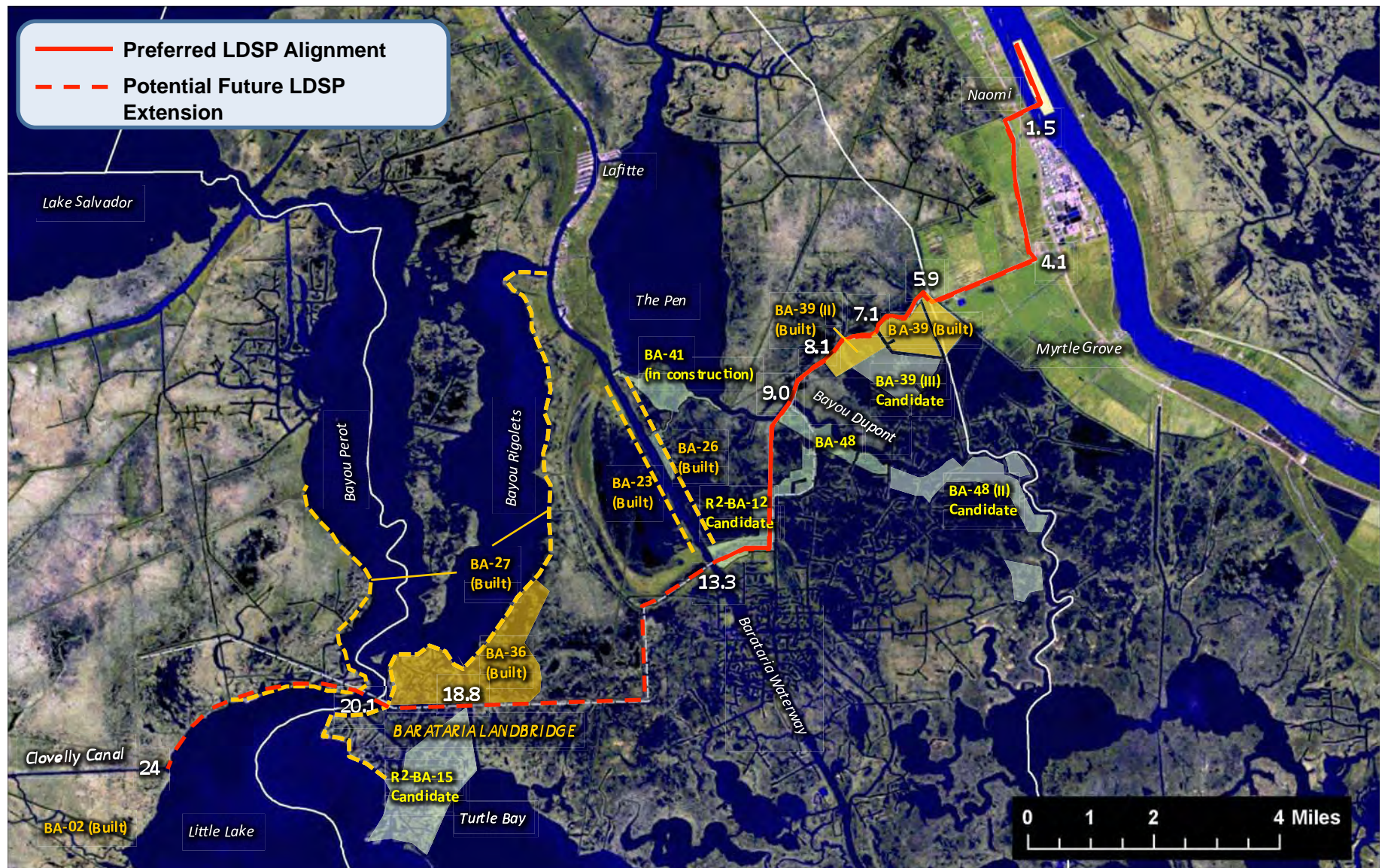
Coastal Protection and  
Restoration Authority of Louisiana



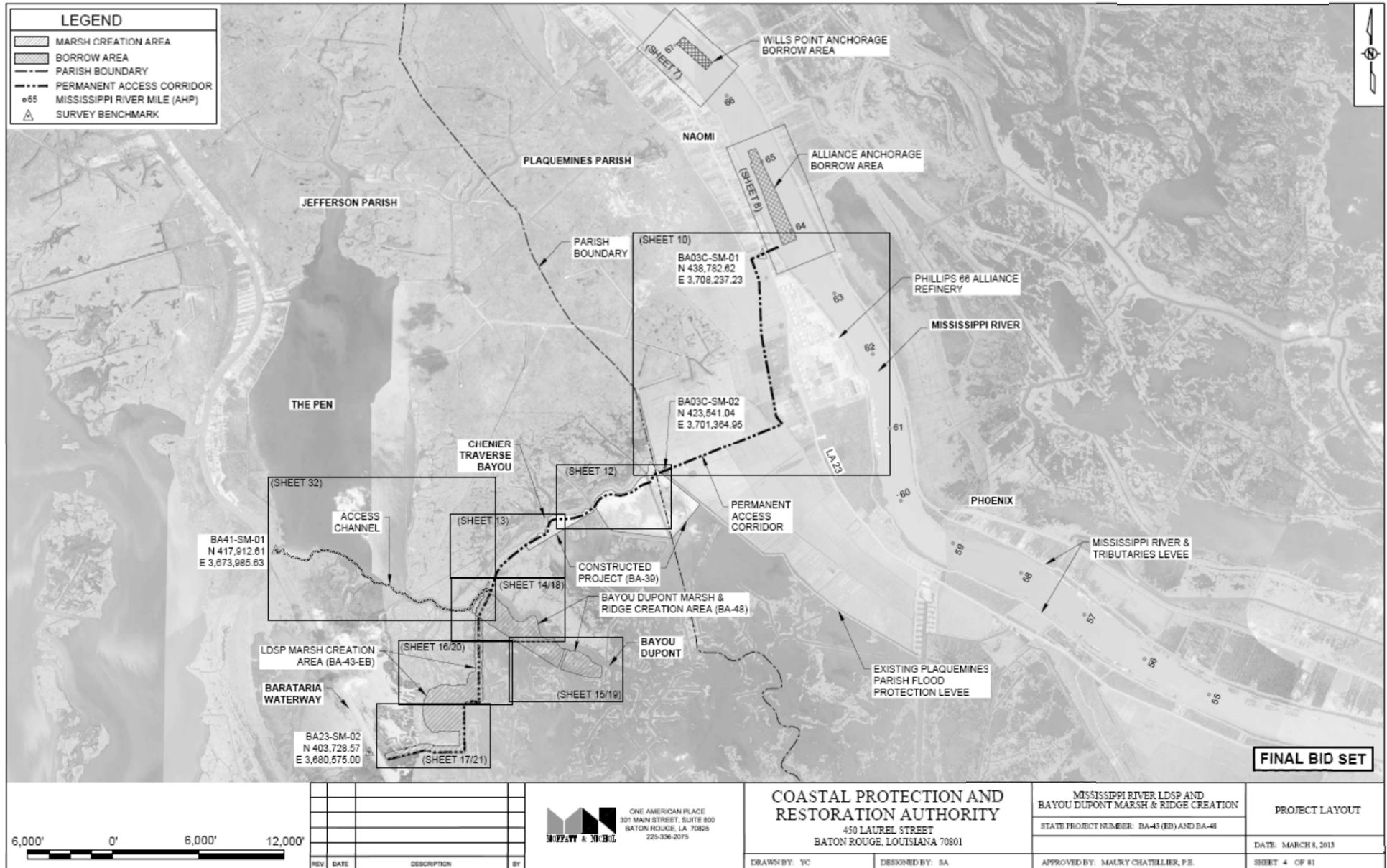
committed to our coast



# General Extent of LDSP and other Projects









# Project Information

## Bayou Dupont Marsh and Ridge Creation (BA-48)

- Create 196 Acres of Marsh
- Nourish 93 Acres of Marsh
- Create 20 Acres (11,000 lf) of Ridge

## Mississippi River Long Distance Sediment Pipeline (BA-43)

- Create 338 Acres of Marsh



Coastal Protection and  
Restoration Authority of Louisiana



committed to our coast

# Status

- Weeks Marine Inc. is the Contractor
- Construction cost is \$ 79 Million.
- Currently mobilizing and constructing access channel and ridge and containment for Bayou Dupont Project.
- Dredging in the Mississippi River to begin September 2014
- Anticipated completion December 2015



Coastal Protection and  
Restoration Authority of Louisiana



committed to our coast





committed to our coast







**Caminada Headland Beach and Dune  
Restoration – Increment I  
January 2014**

# Future Construction



Coastal Protection and  
Restoration Authority of Louisiana



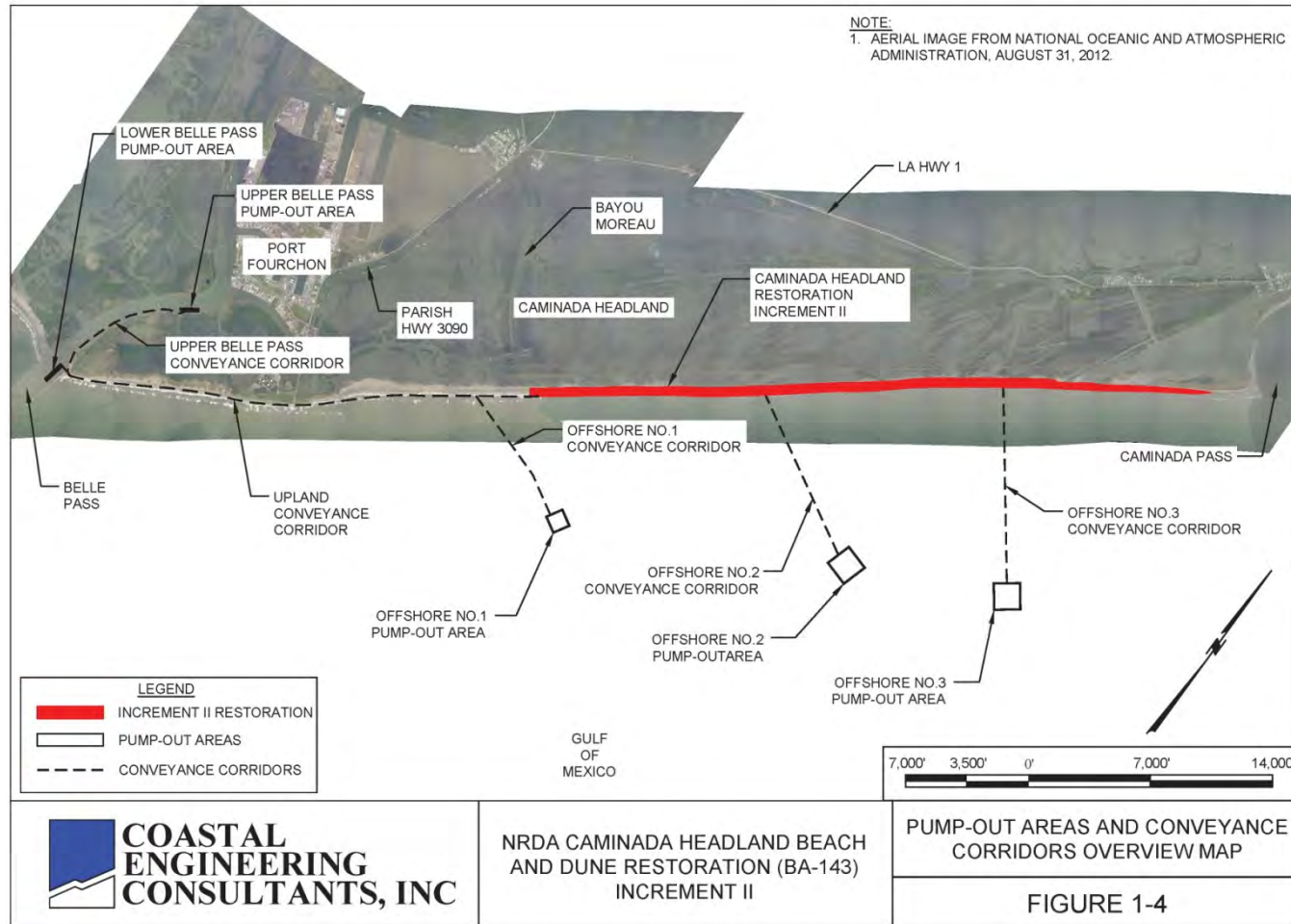
committed to **our coast**



# Caminada Headland Beach and Dune Restoration INCR2 (BA-143)



Coastal Protection and  
Restoration Authority of Louisiana

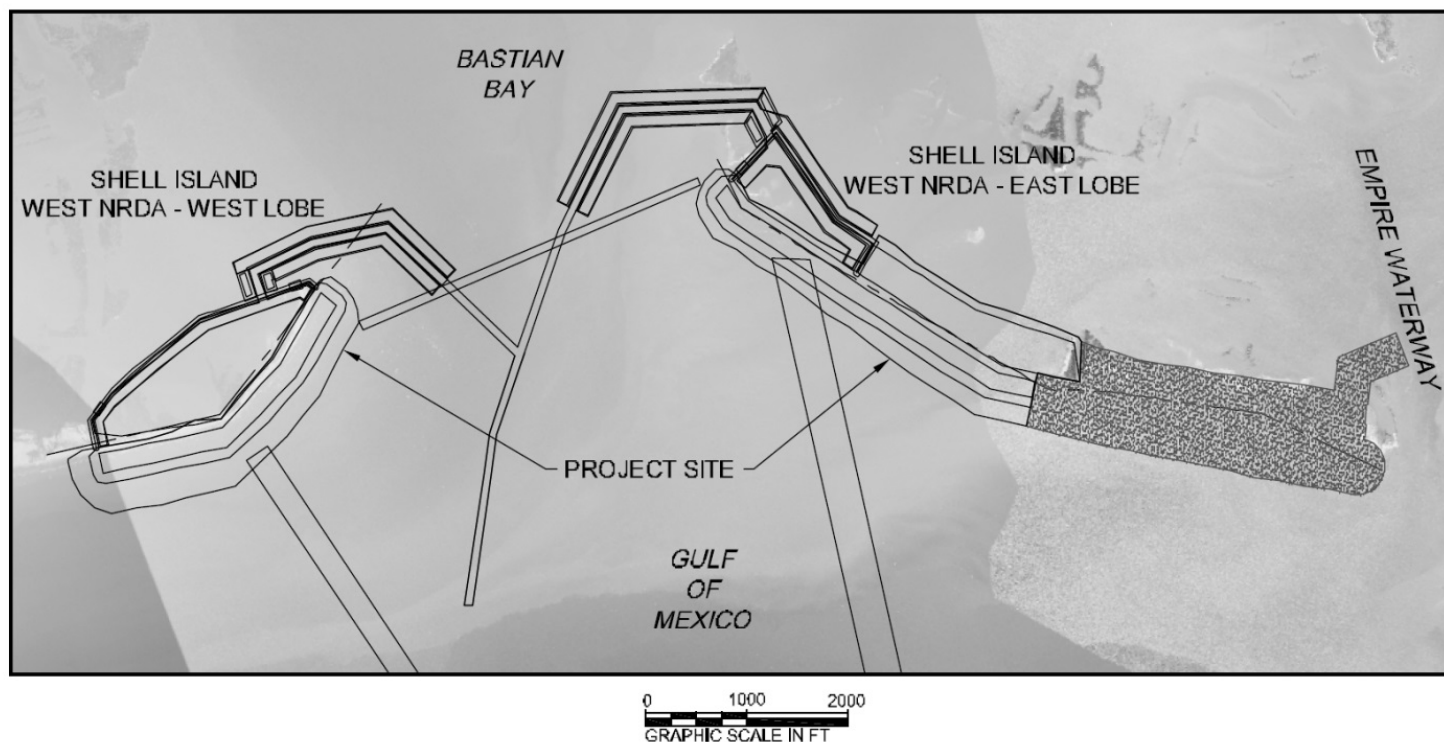


Linear Feet/acres  
Status  
Funding Programs

39,000/489 acres  
Going out for bid  
NFWF

committed to our coast

# Shell Island West (BA-111)



Coastal Protection and  
Restoration Authority of Louisiana

Marsh Creation  
Status  
Funding Program

311 acres  
Engineering and Design  
NRDA

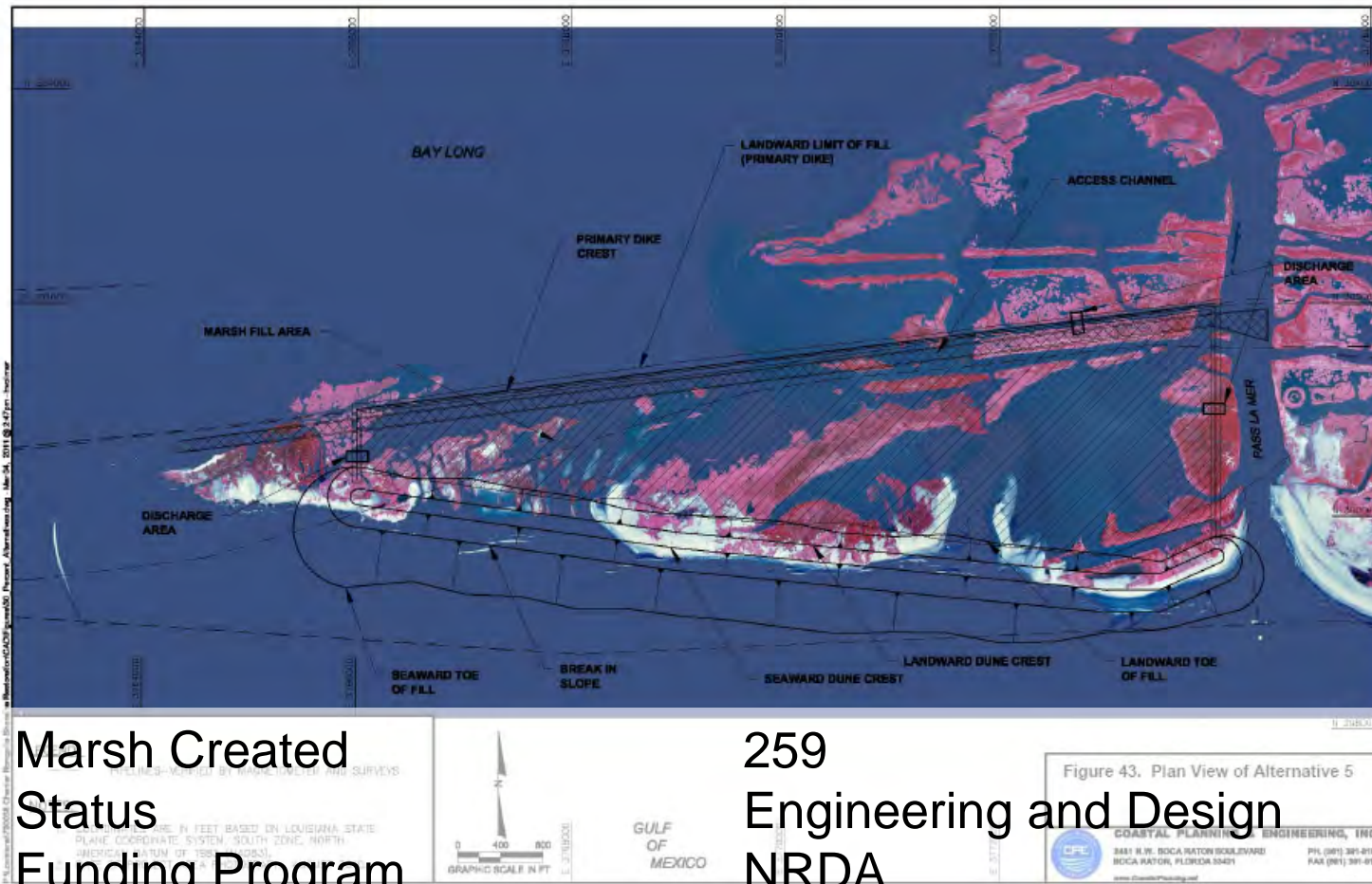
committed to **our coast**



# Cheniere Ronquille Barrier Island Restoration (BA-76)



Coastal Protection and  
Restoration Authority of Louisiana



# NRDA Caillou Lake Headlands (TE-100)



Coastal Protection and  
Restoration Authority of Louisiana



COASTAL  
ENGINEERING

Marsh Creation  
Status  
Funding Programs

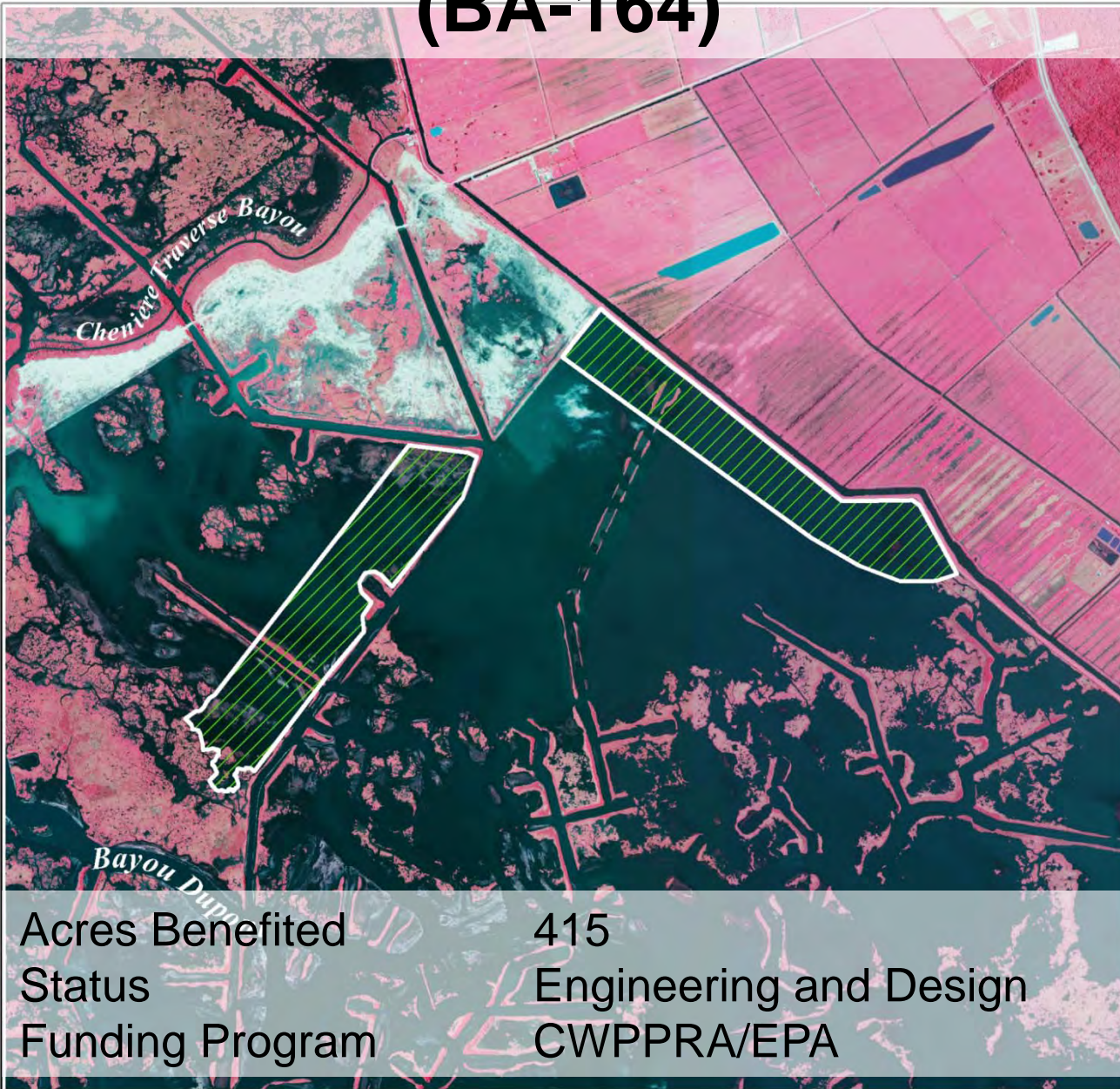
146 (497 dune)

Engineering and Design  
NRDA

committed to our coast



# Bayou Dupont Sediment Delivery 3 (BA-164)



Bayou Dupont Marsh Creation 3  
(PPI 22 Candidate)



Coastal Protection and  
Restoration Authority of Louisiana



to our coast



# East Timbalier Island Restoration (TE-118)



Coastal Protection and  
Restoration Authority of Louisiana



Total Project Budget

TBD

Marsh Creation

TBD

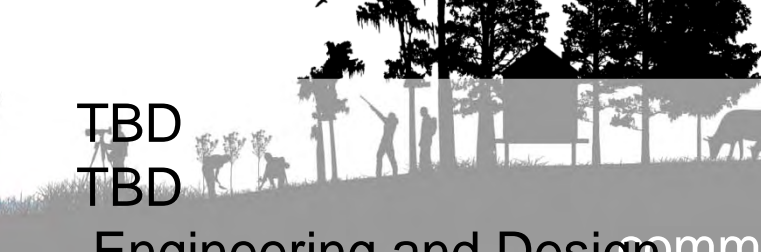
Status

Engineering and Design

Funding Programs

NFWF

committed to **our coast**





# Madison Bay Marsh Creation and Terracing (TE-51)



Coastal Protection and  
Restoration Authority of Louisiana



Marsh Create/Nourish  
Status  
Funding Programs

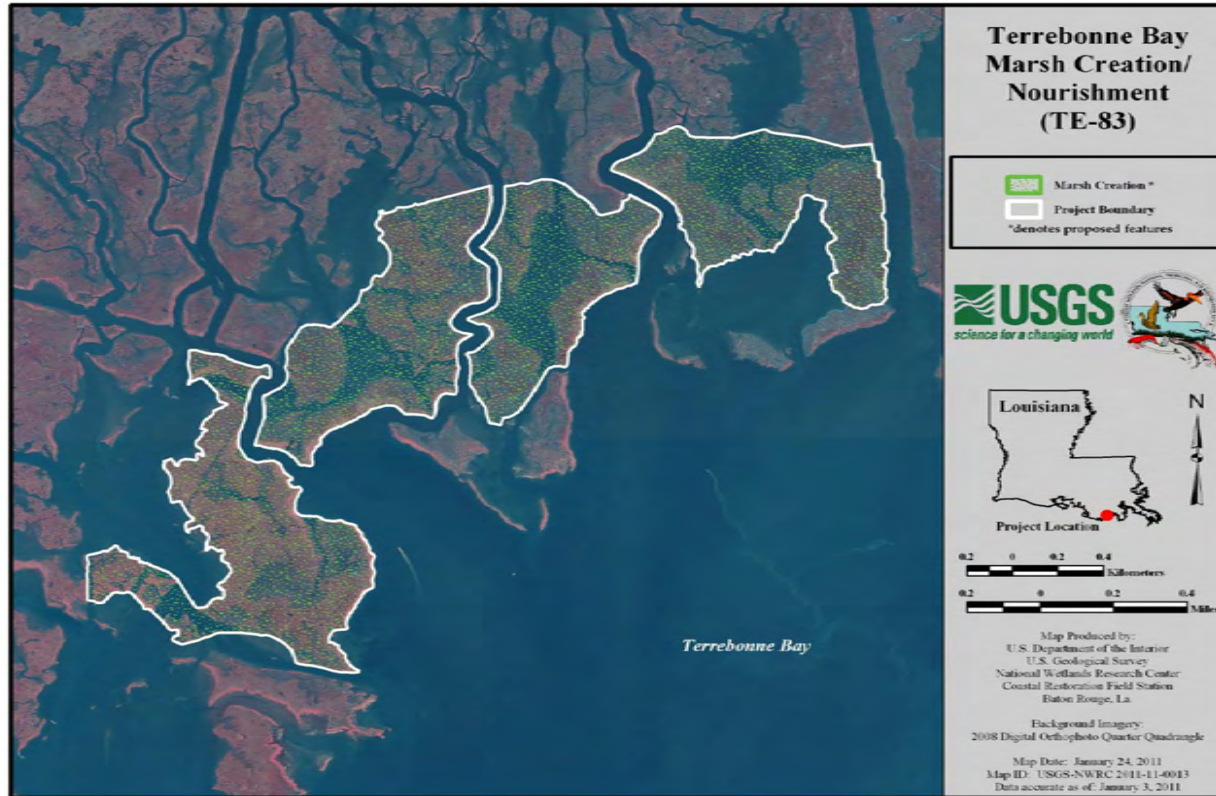
470 acres  
Engineering and Design  
CWPPRA/NMFS

committed to our coast

# Terrebonne Bay Marsh Creation - Nourishment Project (TE-83)



Coastal Protection and  
Restoration Authority of Louisiana



Marsh Create/Nourish  
Status  
Funding Programs

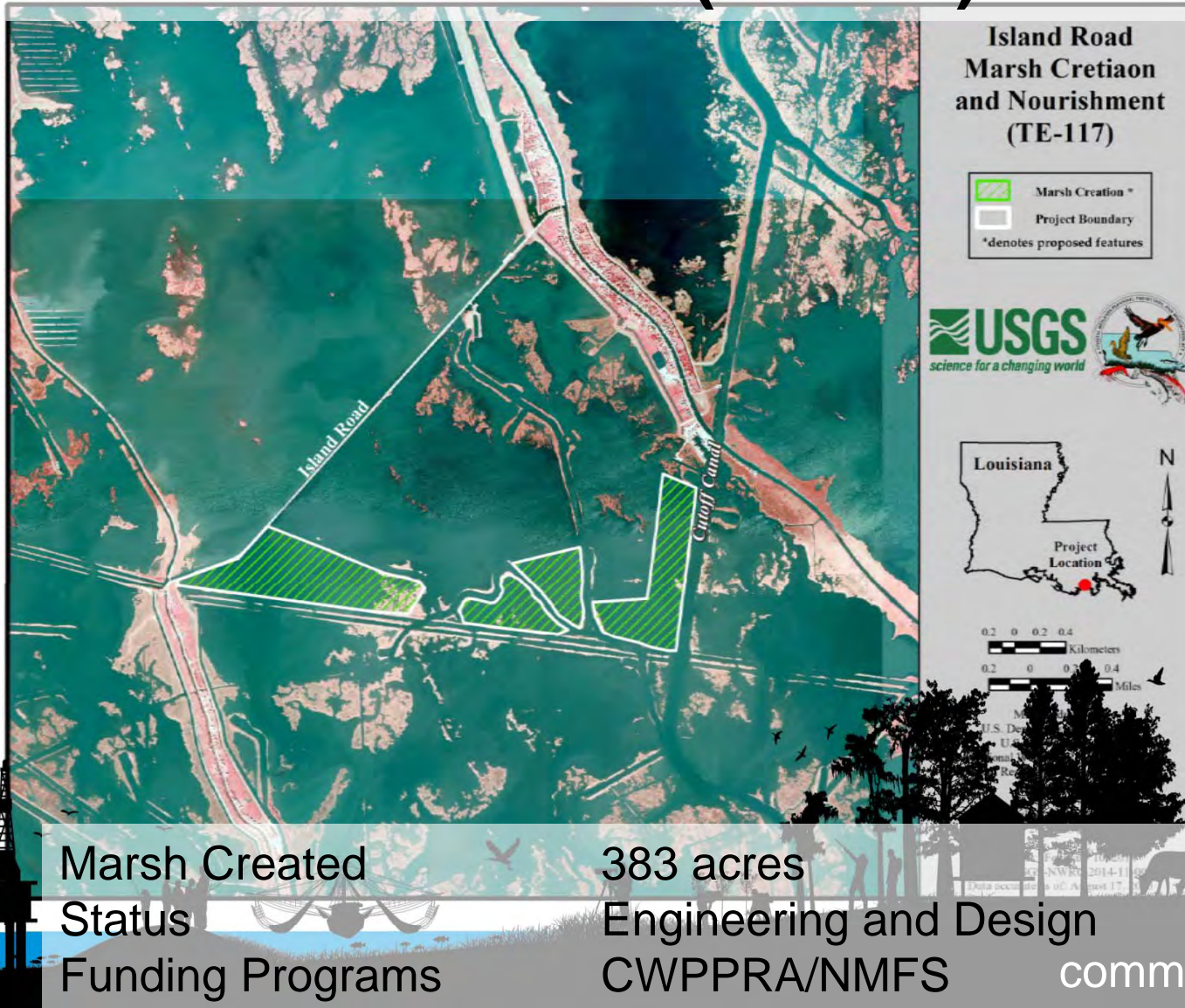
664

Engineering and Design  
CWPPRA/USFWS

committed to our coast



# Island Road Marsh Creation & Nourishment (TE-117)



Marsh Created  
Status  
Funding Programs

383 acres  
Engineering and Design  
CWPPRA/NMFS

committed to **our coast**



Coastal Protection and  
Restoration Authority of Louisiana

# Caminada Headlands Back Barrier Marsh Creation (BA-171)



Coastal Protection and  
Restoration Authority of Louisiana

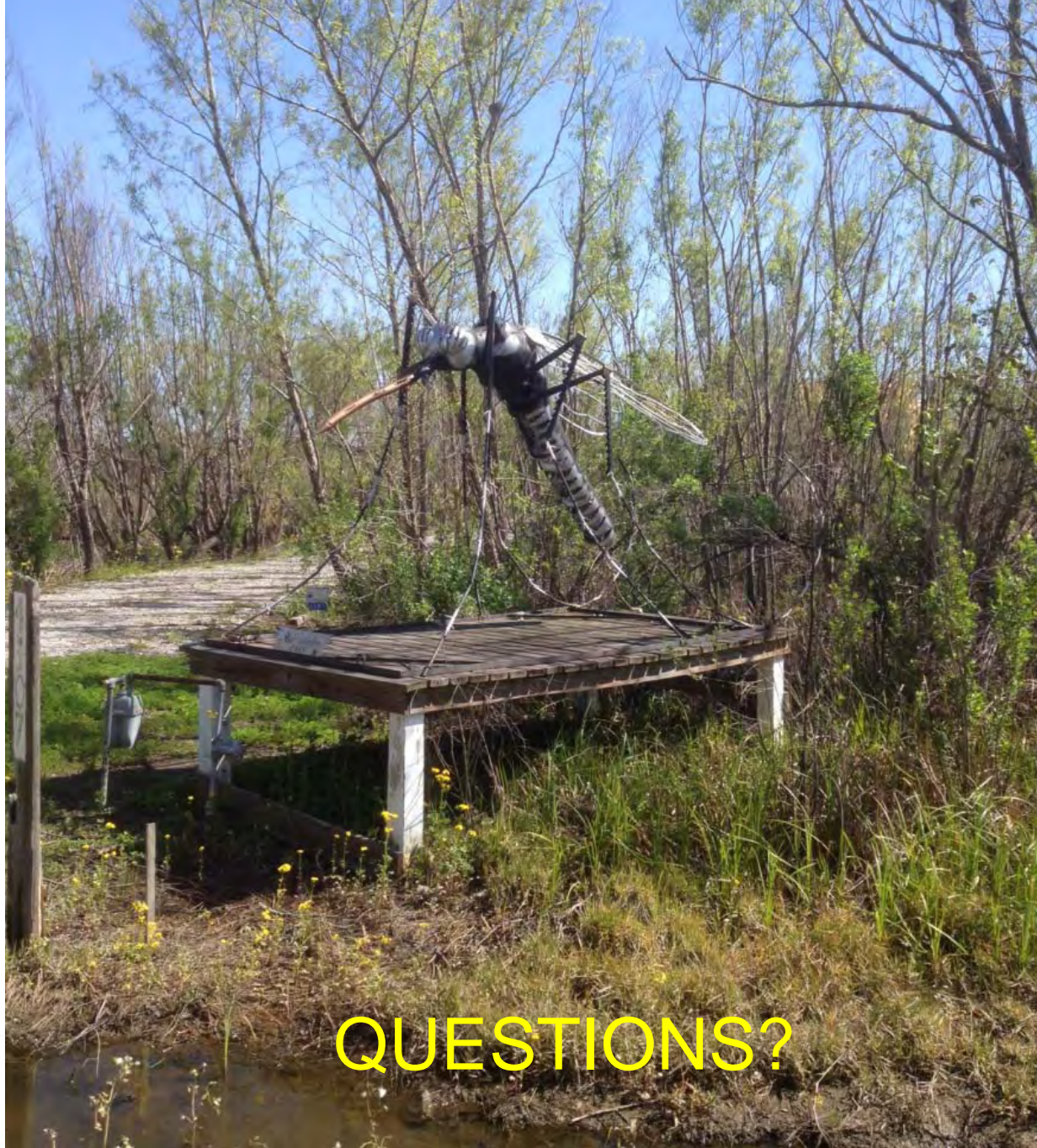


Marsh Create/Nourish  
Status  
Funding Programs

430 acres  
Engineering and Design  
CWPPRA/EPA

committed to our coast





QUESTIONS?



Coastal Protection and  
Restoration Authority of Louisiana



committed to our coast