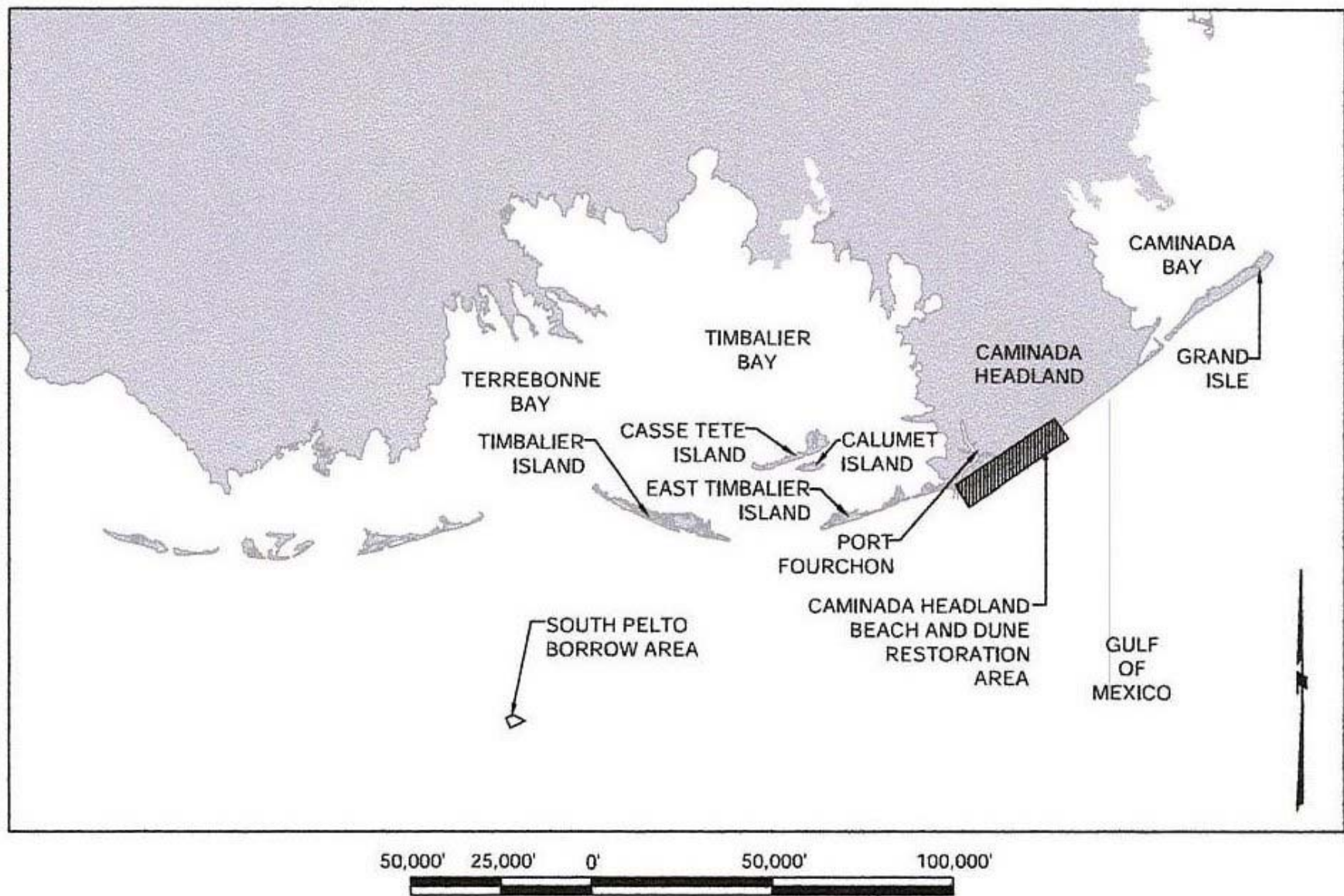




# **Piping Plover Surveys on the Caminada Headland Beach and Dune Restoration Project in Port Fourchon, Louisiana**





Location of Caminada Headland Project





Area of Project Site  
Additional Geography

# Project Goals

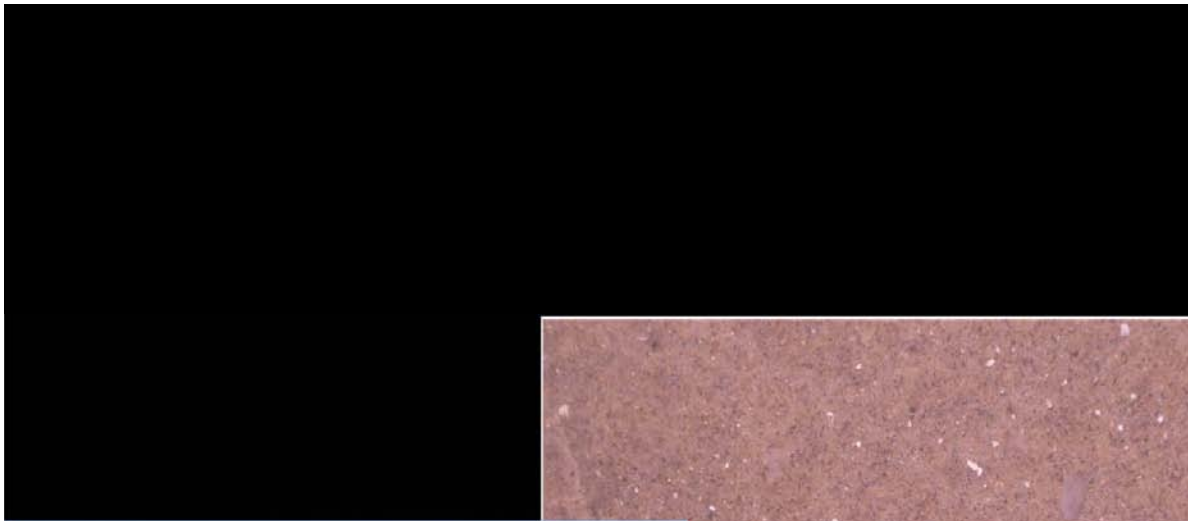
- Determine impacts associated with construction on Piping Plover distribution nesting shorebirds and benthic communities
- Document how operations of an active coastal restoration project influence the distribution of these birds along the beach





# Benthic Surveys







# Data Collected Includes:

- Number of individuals
- Coordinates
- Location (Gulf, Bay or Area in Between)
- Activity (Foraging, Loafing, Flying, Aggressive Behavior)
- Color Band Combinations
- Photographs





# Focal Species



Piping Plover



Wilson's Plover



Snowy Plover



Red Knot





© Greg Lavaty

Piping Plover in Alternate Plumage (Breeding/Summer)



Piping Plover in Basic Plumage (Non-breeding/Winter)





© Greg Lavaty

Piping Plover



© Greg Lavaty

Wilson's Plover



DeMay, 2013

Snowy Plover



© Greg Lavaty

Semi-palmated Plover



Piping Plover Breeding and Winter Range (Courtesy of Cornell Laboratory of Ornithology)



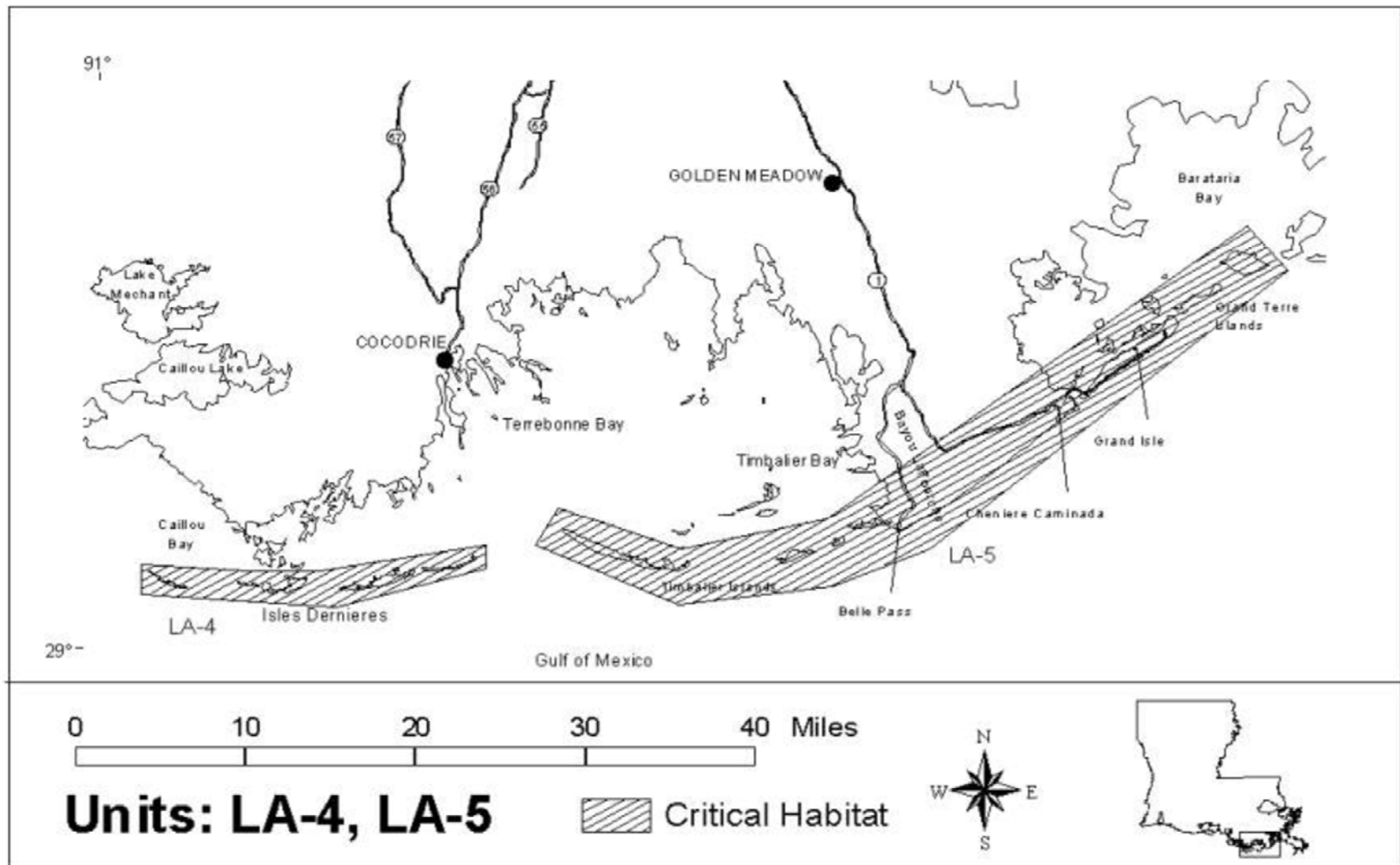
**1978: Designated threatened**

**1985: Upgraded to endangered**

**2007: Critical habitat designated**







Critical Habitat Designated for Piping Plover along the lower Louisiana coastline.



Missouri  
River &  
Atlantic  
Coast



North  
Dakota  
(Missouri  
River)



Great  
Lakes



Nebraska



Elmer's  
Island



Bahamas



# 2013 Alphanumeric bands

Lake Sakakawea & along Garrison reach of the Missouri River, North Dakota



Adult



Hatch Year











DeMay, 2013